



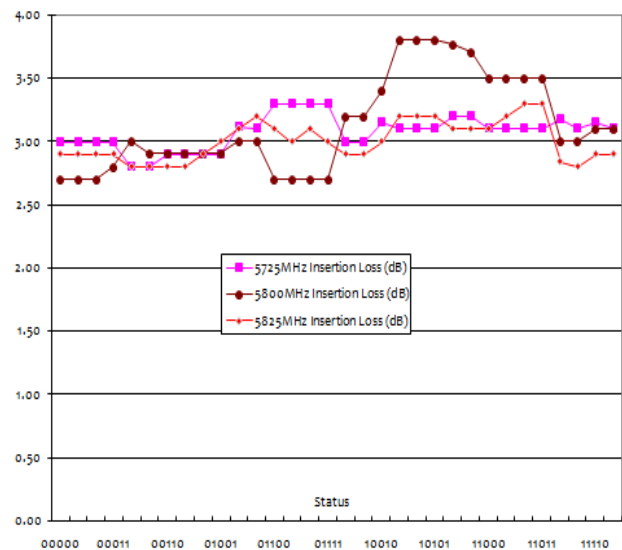
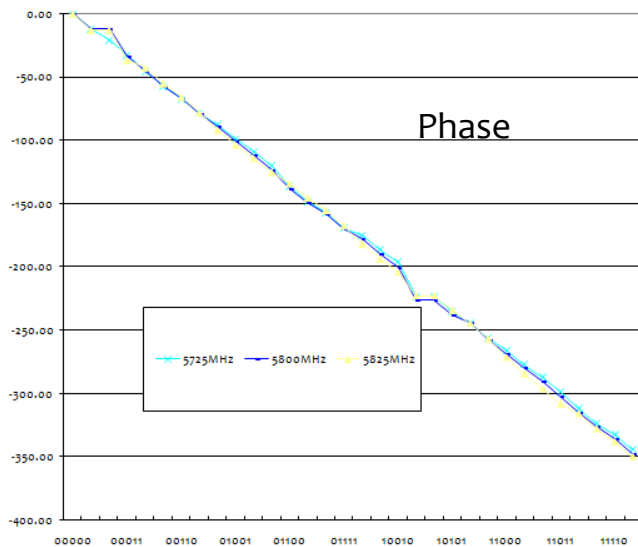
4-8GHz Digital Step Phase Shifter



Features

- Wide Band Operation up to 10% wide bandwidth.
- High linearity up to 10dBm P1dB
- TTL compatible driver include
- Fast Switching Speed
- Flat phase shifting response, low phase error.
- Low Insertion Loss and High Isolation
- Temperature Range -40°C~+85°C
- Customization available upon request

360° Digital Phase Shifter 5 bits (Wide Band Absorptive)							
Part Number	Center Frequency (GHz)	Bandwidth	Insertion Loss (dB)	VSWR	Power	Step	Phase Range
RFPST0408N5	4-8GHz	FULL	5.5dB	2.00	10dBm	11.25°	360°
360° Digital Phase Shifter 5 bits (Narrow Band Reflective)							
Part Number	Center Frequency (GHz)	Bandwidth	Insertion Loss (dB)	VSWR	Power	Step	Phase Range
RFPST0408D5	4-8GHz	13%	4.5dB	1.50	10dBm	11.25°	360°



Electrical Operation

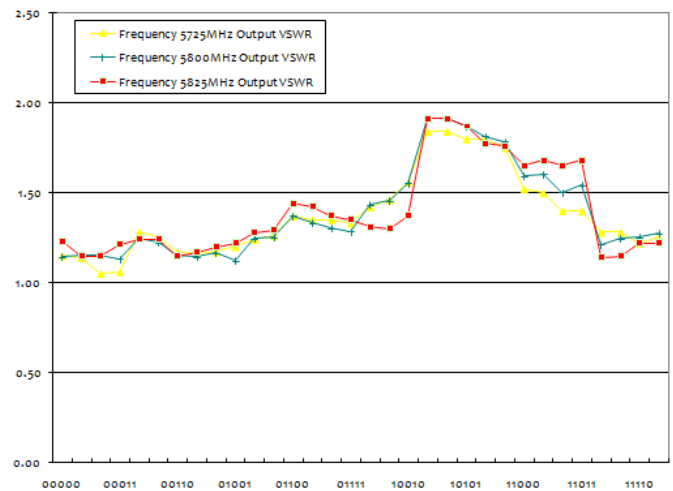
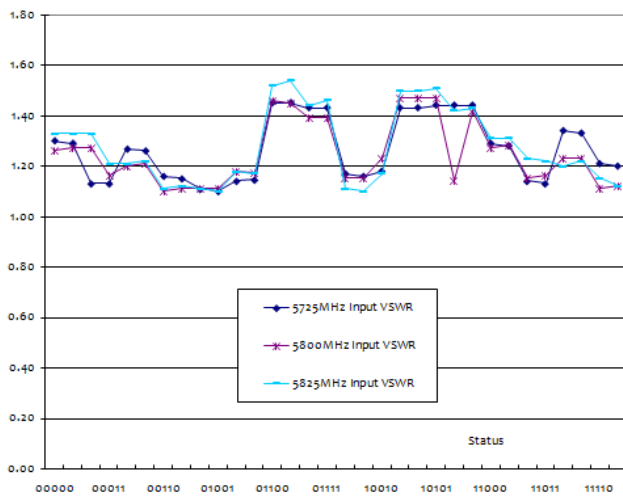
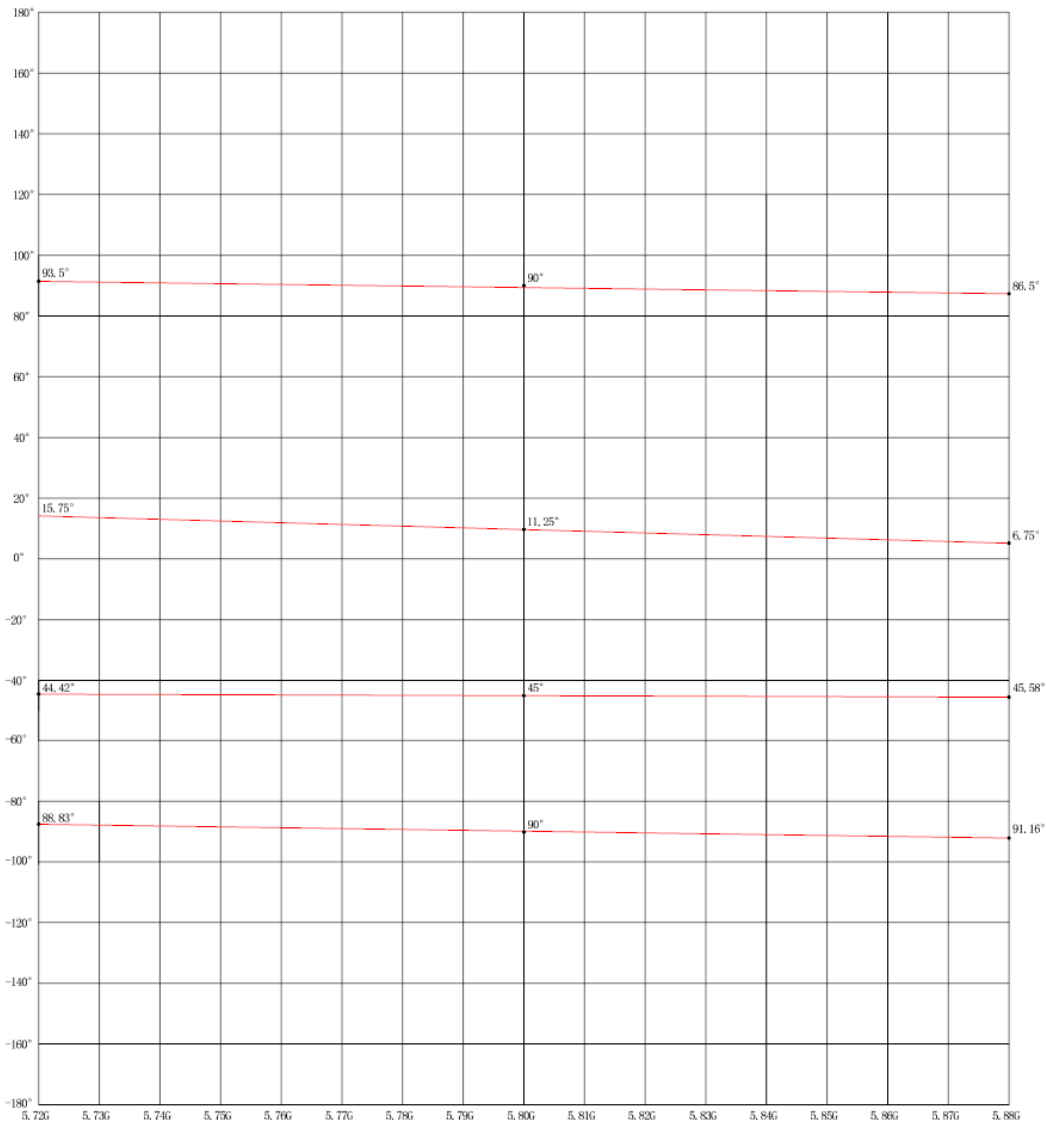
DC Biasing:	+5.0V (50mA max.)	-5.0V (200mA max.)
Power Handle:	0dBm~+10dBm (upon request)	
DB15 Pins:	Pin 1,2,9~15	n/a
	Pin 3	GND
	Pin 4	C1
	Pin 5	C2
	Pin 6	C3
	Pin 7	C4
	Pin 8	C5

Mechanical Specification

Finishing:	Gold plating for brass material Other finishing available
Connector:	SMA-F Per MIL-C-39012
Control PIN:	0.02" dia x 0.15" solder pins
Weight:	75 grams max.
Mounting:	(4) 0.1" dia through holes



Phase flatness sample chart (tuned to 5.22-5.88GHz)



4-8GHz (10% Bandwidth) Digital Step 360° Phase Shifter



RF-LAMBDA

The power beyond expectations

RFPSHT0408G

4-8GHz (10% Bandwidth) Digital Step 360° Phase Shifter

