

DESCRIPTION

PMI MODEL NUMBER PS-500M2G-8B-SFF IS A 0.5 TO 2GHZ DIGITALLY CONTROLLED ANALOG PHASE SHIFTER WITH CAPABILITY FOR PHASE SHIFTING FROM 0° TO 360°. THE UNIT CONSISTS OF AN ANALOG PHASE SHIFTER AND A DIGITAL-TO-ANALOG CONVERTER. EIGHT LOGIC INPUT LINES ALLOW 256 DISCRETE VALUES OF PHASE.

SPECIFICATIONS

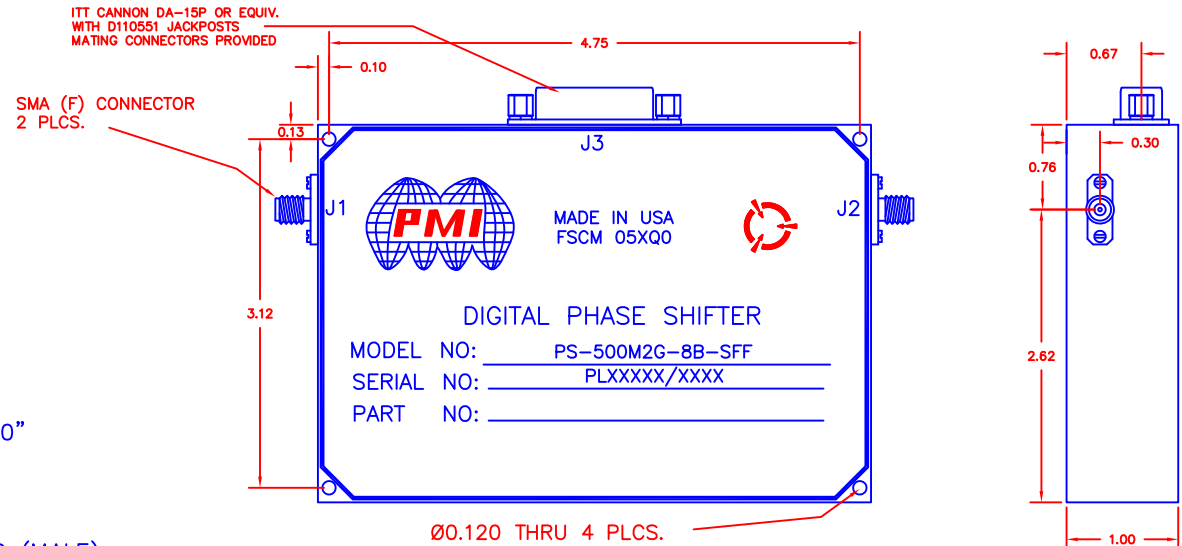
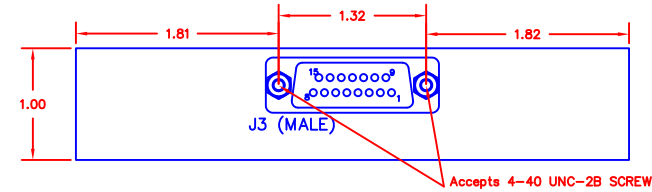
- FREQUENCY RANGE: 0.5 TO 2 GHz
- CONTROL 8 BIT TTL
- INSERTION LOSS 13dB MAX
- PHASE SHIFT 360° TYP
- AMPLITUDE ERROR ±1.0 dB MAX.
- PHASE SHIFT ERROR ±10° MAX.
- SWITCHING SPEED 500 nsec MAX.
- POWER SUPPLY
 - +V: +15V
 - V: -15V
- SIZE: 4.95" X 3.38" X 1.00"
- WEIGHT: TBD
- CONNECTORS(RF) SMA FEMALE
- CONNECTOR (CONTROL) 15 PIN SUBMINIATURE D (MALE)
- TEMPERATURE 0°C TO +50° C
- FINISH GRAY EPOXY POLIMIDE COATING IAW MIL-C-22750,TYPE I OVER EPOXY POLIMIDE PRIMER IAW MIL-P-23377, TYPE I, CLASS 1 OR 3.

ENVIRONMENTAL RATINGS

- **TEMPERATURE:** -55°C TO +85°C (OPERATING)
..... -65°C TO +125°C (STORAGE)
- **HUMIDITY:** MIL-STD-202F, METHOD 103B COND. B
- **SHOCK:** MIL-STD-202F, METHOD 213B COND. B
- **VIBRATION:** MIL-STD-202F, METHOD 204D COND. B
- **ALTITUDE:** MIL-STD-202F, METHOD 105C COND. B
- **TEMPERATURE CYCLE:** MIL-STD-202F, METHOD 107D COND. A

NOTE: SPECIFICATIONS WILL VARY OVER OPERATING TEMPERATURE
NOTE: THE ABOVE SPECIFICATIONS ARE SUBJECT TO CHANGE OR REVISION

REVISIONS				
ZONE	REV.	DESCRIPTION	DATE	APPROVED
	A1	ORIGINAL RELEASE	2/9/11	
	A2	ECN #14-0095	06/30/14	



ELECTRICAL CONNECTOR PIN ASSIGNMENTS	
PIN LETTER	FUNCTION
1	LOGIC INPUTS (LSB)
2	LOGIC INPUTS
3	LOGIC INPUTS
4	LOGIC INPUTS
5	LOGIC INPUTS
6	LOGIC INPUTS
7	LOGIC INPUTS
8	LOGIC INPUTS (MSB)
9	NC
10	NC
11	NC
12	NC
13	+ 15 VDC
14	- 15 VDC
15	GROUND

ALL DIMENSIONS ARE IN INCHES
TOLERANCES:
X.XX ±0.020
X.XXX ±0.010

PMI CONFIDENTIAL AND PROPRIETARY

PLANAR MONOLITHICS INDUSTRIES, INC.

7311-F GROVE ROAD
FREDERICK, MARYLAND 21704 USA
TEL: 301-662-5019 FAX: 301-662-1731
WEBSITE: www.pmi-rf.com
E-MAIL: sales@pmi-rf.com
ISO 9001 CERTIFIED



APPROVALS		DATE	TITLE		
DRAWN <i>BFB</i>		2/9/11	PRODUCT FEATURE		
MODIFIED <i>fk</i>		9/18/11	PS-500M2G-8B-SFF		
ISSUED			0.5-2.0GHz, 0°-360° PHASE SHIFTER		
SIZE	FSCM NO.	DWG NO.	REV.		
A	05XQ0	27014064	A2		
SCALE N:S			SHEET 1 OF 1		