

# RFID CEILING TILE ANTENNA FPA4-0.4R/9408



## ELECTRICAL

FREQUENCY:	433 MHz
GAIN:	4 dBiC Nom.
POLARISATION:	Right Hand Circular
BEAMWIDTH:	57° (Az) x 56.5° (El)
AXIAL RATIO:	3 dB
VSWR:	1.5:1
POWER RATING:	5 W
FRONT TO BACK:	25dB

## MECHANICAL

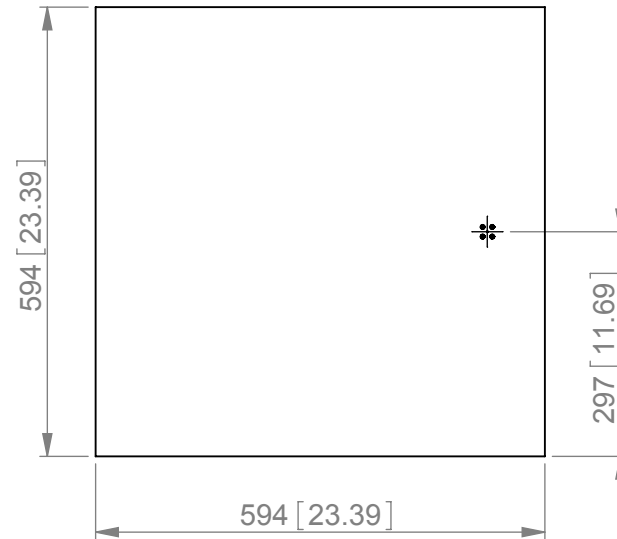
STANDARD FINISH:	Gloss White
MASS:	2.3 kg / 5.1 lbs
TEMPERATURE:	-20° to +50°C
WIND LOADING:	N/A

## MOUNTING OPTIONS

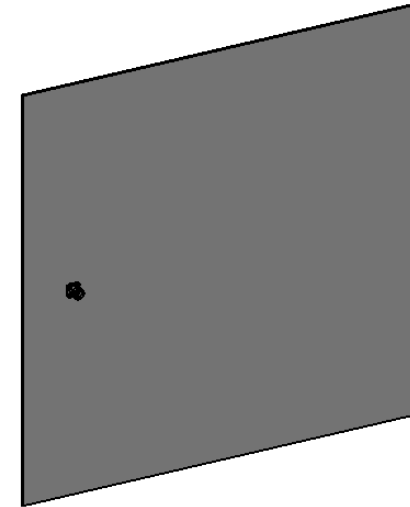
**KITS AVAILABLE:** Fits standard ceiling tile aperture  
See Separate Data Sheets

GA: 9408-1 Issued: 241008  
DIMENSIONS: mm [inches] H

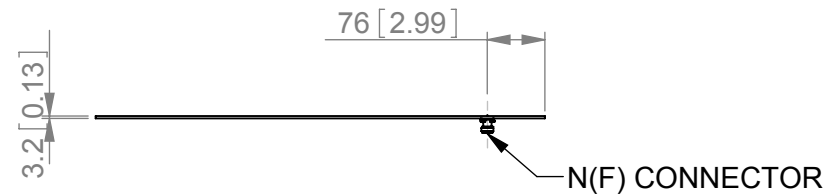
**FRONT VIEW**



**ISOMETRIC VIEW**



**END VIEW**



FPA4-0.4R/9408

European Antennas Ltd. has a policy of continuous development and therefore stress that the data contained on this sheet should be used for guidance only.

European Antennas Ltd. is part of the Cobham Antennas Division



Certificate No 9268

European Antennas Ltd  
Lambda House, Cheveley  
Newmarket, Suffolk, CB8 9RG, UK  
Tel: +44 (0)1638 731888  
sales@european-antennas.co.uk  
[www.european-antennas.co.uk](http://www.european-antennas.co.uk)