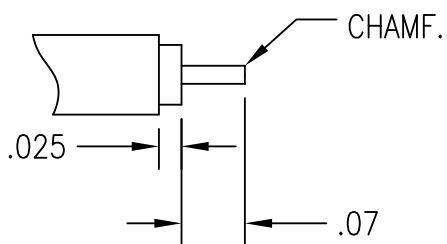
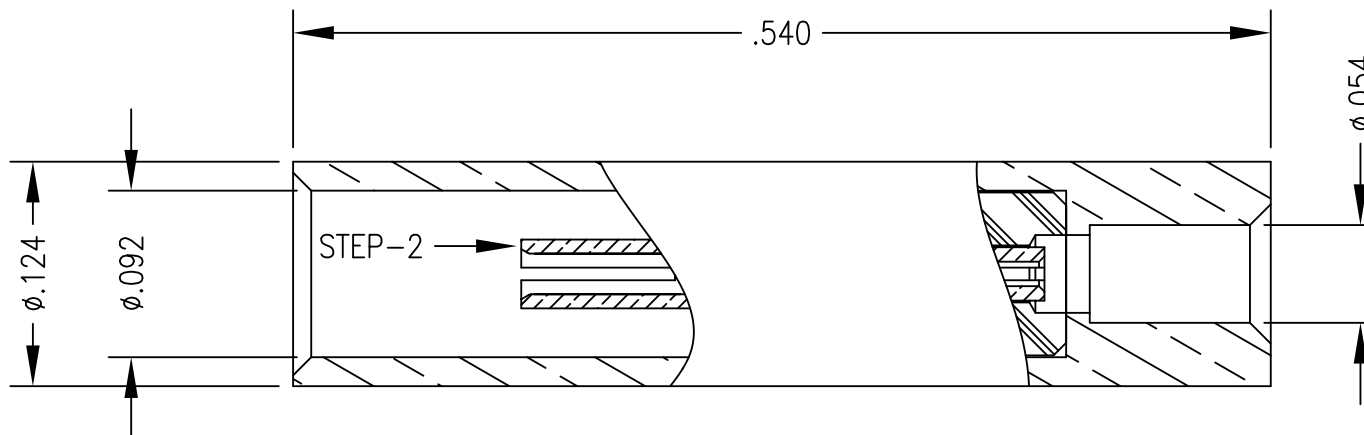


- 1.0 PERFORMANCE: (sea level)  
 1.1 FREQUENCY RANGE DC-12 GHz  
 1.2 SYSTEM IMPEDANCE 50 OHMS  
 1.3 VSWR < 1.06 (DC-6 GHz)  
       VSWR < 1.26 (6-12 GHz)  
 1.4 DWV: 275 Vrms @ 60 Hz  
 1.5 TEMP RANGE: -65 / +165 °C

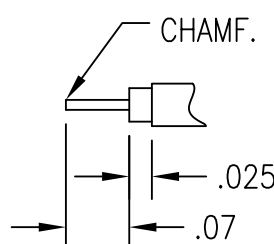
- 2.0 MATERIALS  
 2.1 SOCKET CONTACT: BeCu  
 2.2 BODY: BRASS  
 2.3 INSULATOR: PTFE  
 3.0 FINISHES: SEE TABLE

DWG NO. OL-0717-03-1		REV. E
PART NUMBER	BODY	CONTACT
0717-03-SS	SILVER	SILVER

PLATING PER SAN-TRON SPEC. 7.3.1-8



CABLE PREP DIMENSIONS  
(NOT TO SCALE)  
SEMI RIGID .086



CABLE PREP DIMENSIONS  
(NOT TO SCALE)  
SEMI RIGID .047

CABLE TERMINATION:

- 1) SOLDER S/R 047 INTO BODY  
THE INSULATOR MAY BECOME DISLODGED DURING STEP 1
- 2) USING ANY PIN SMALLER THAN  $\phi.090$  PUSH CENTER CONTACT TO DEAD STOP
- 3) SOLDER S/R 086 INTO BODY

THIS DRAWING CONTAINS CONFIDENTIAL INFORMATION PROPRIETARY TO SAN-TRON, INC. IT MUST NOT BE REPRODUCED OR DISCLOSED TO OTHERS OR USED IN ANY OTHER WAY, IN WHOLE OR PART EXCEPT AS AUTHORIZED IN WRITING BY SAN-TRON, INC.

UNLESS OTHERWISE SPECIFIED:  
 ALL DIMENSIONS ARE IN INCHES.  
 ALL DIMENSIONS ARE AFTER PLATING.  
 .XXX =  $\pm.005$  ALL MACHINED SURFACES  $64\sqrt{\text{MAX}}$ .  
 .XX =  $\pm.01$  ANG.  $\pm 1/2^\circ$  FRACTIONAL =  $\pm 1/64$   
 $\text{Ⓢ}$  .004 MAX. TIR.  $\perp$  AXIS .001

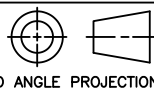


**SAN-TRON, INC.**  
 4 NEWBURYPORT TPK. IPSWICH MA USA 01938  
 TEL: 978 - 356 -1585 FAX: 978 - 356 -1573  
 WWW. santron.com E MAIL: santron@santron.com

TITLE  
SPLICE, SEMIRIGID 086 TO 047

MATERIAL: SEE NOTES  
 FINISH: SEE TABLE

CAGE CODE: 50896 DWG NO. OL-0717-03-1 REV. E  
 SCALE X:X



DWN	JTH	7/31/09
CHKD	FSH	7/31/09
APPR	FSH	7/31/09

Rev.	Revisions	Disp.	Date	Dwn.	Appd.
E	FREQ RANGE WAS 3 GHz / ADD VSWR NOTES	USE	4/14/11	FSH	FSH
D	ISSUE REV LEVEL PER 1ST SHIPMENT	NEW	9/2/09	FSH	FSH
A	PRODUCTION RELEASE	NEW	7/31/09		
Ref.:	REMOVE ALL BURRS AND SHARP EDGES .005 MAX.	INTERPRET PER	ASME Y14.5M-1994		
SK-					