



Features

- Frequency Range: 2~4GHz
- Stable limiting: <1dB (Typ)
- Output limiting level : ≥ 10 dBm
- Thin film hybrid circuit,high reliability
- 50Ω impedance
- Custom limiting level available
- Vcc=+12V or +15V
- Operating temperature range : -55°C~+85°C

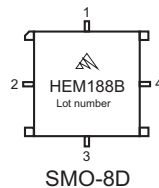
Electrical (50Ω, V_{CC}=+5V, -55°C ≤ T_A ≤ +85°C)

Parameter	Symbol	Unit	Guaranteed	Typical
Frequency range	f _L ~f _H	GHz	2~4	2~4
Gain	Gp	dB	10	11
Gain Flatness	ΔGp	dB	±0.75	±0.5
Noise figure	F _n	dB	8.5 ^Δ	8.0
Output Limiting level	P _o	dBm	≥10.0	—
VSWR	VSWR	—	2.0:1	1.7:1
Supply current	I _{cc}	mA	55	50

Note: “ Δ ” T_A=24±1°C.

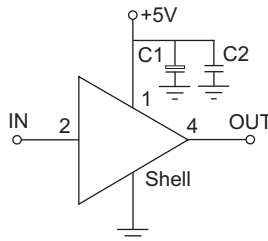
Maximum Ratings

- Power supply: +6V_{DC}
- RF input: +20dBm
- Storage Temp: +125°C



Application Notes

1. Typical application shown as right, C₁=3.3~22 μF, C₂=1000~3300pF.
2. Keep the bottom of amplifier closely to PCB for better grounded when assembling.
3. up to 70dB limiting amplifier is available by means of cascade
4. Connectorized package (SMA-1) available.
5. See assembly section for outline and mounting information.



Typical Curves

