

Wideband Omni-directional Antenna 0.9 to 20 GHz

Catalogue number : **QOM-SL-0.9-20-S-SG-R**

Q-par reference : **QMS-00021**

Contents: **Summary Table
Typical Antenna Gain
Typical Beamwidth / Patterns
VSWR**



Test Report

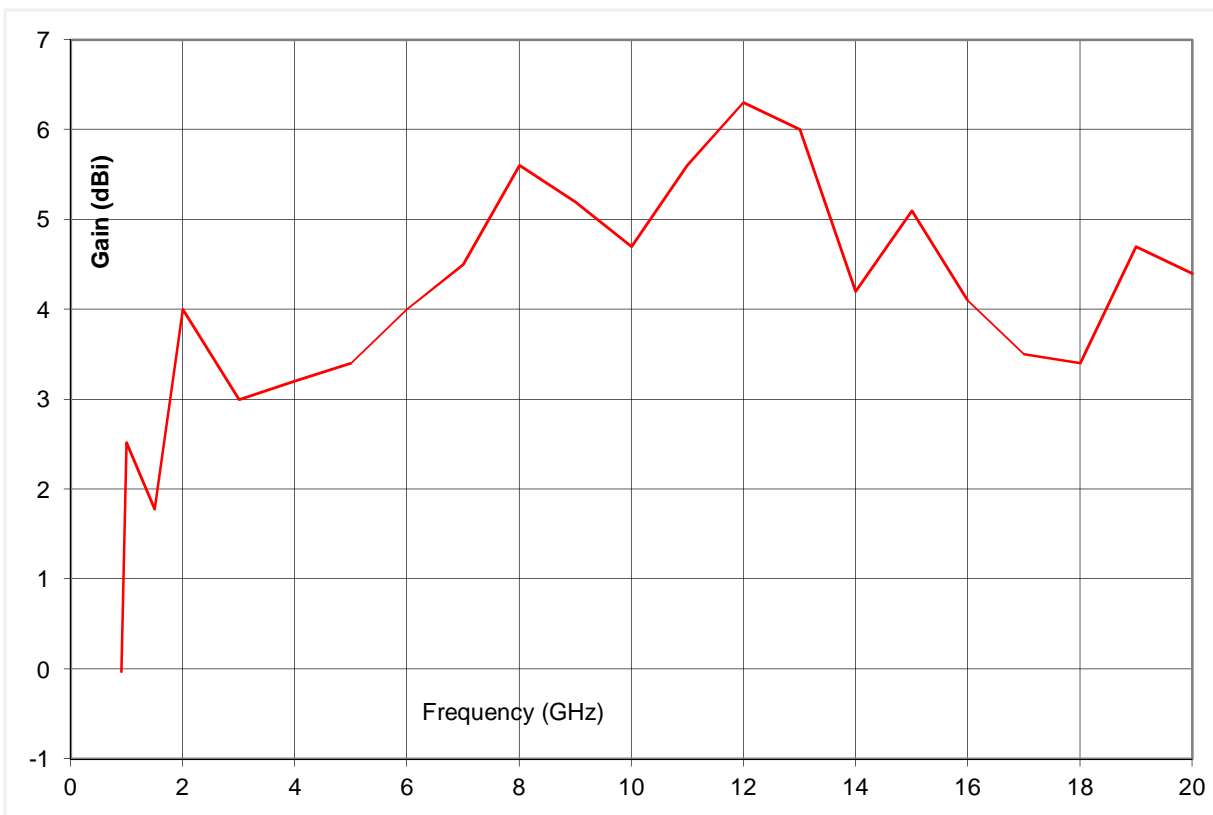
Typical Specification

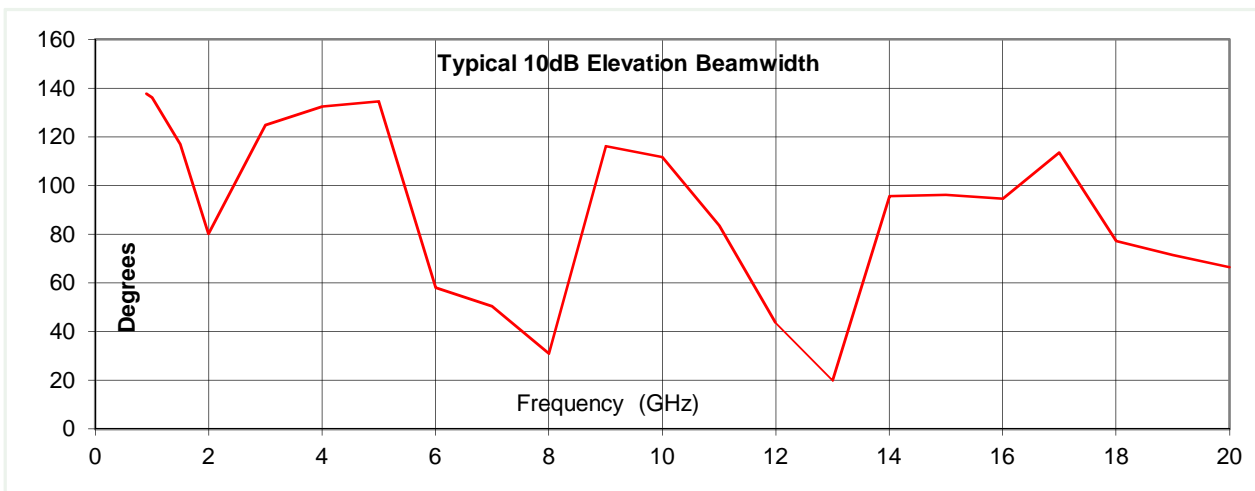
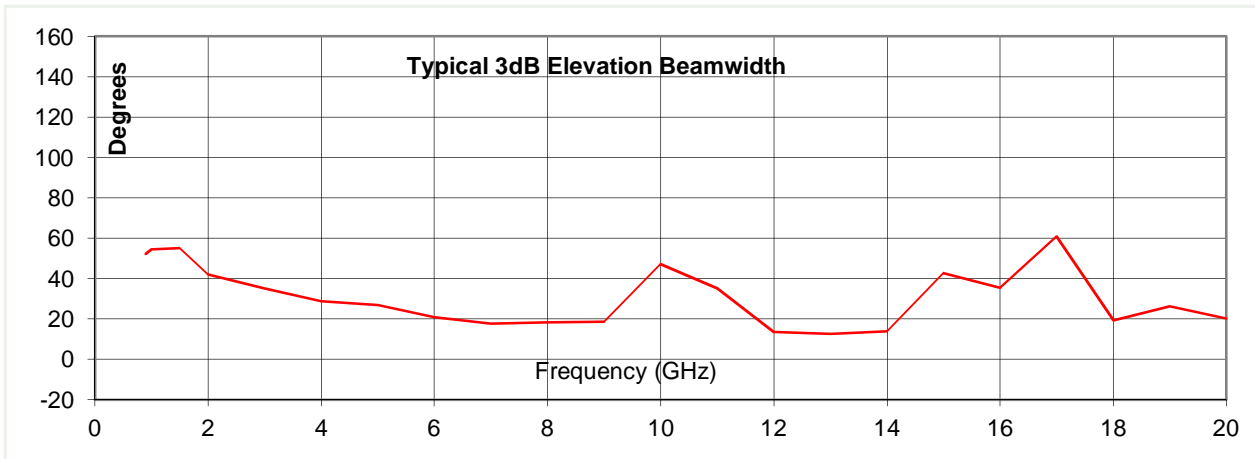
Frequency	0.9 to 20 GHz
Connector Type	SMA type jack
Power Handling	40 Watt c.w.
VSWR	< 3.2 :1 max, < 2.0:1 over most of band
Gain	0 to 6.3 dBi 'peak gain above horizon'
Azimuth Ripple	Typically < +/- 1dB on horizon
Weight	362 g
Size- max.	100 mm diameter base x 115 mm height (without bracket)
Mounting	Pole mounting bracket (for poles up to 32 mm diameter).
Construction	Aluminium and Engineering plastics. Painted.

Note: cable may influence antenna performance at low frequencies

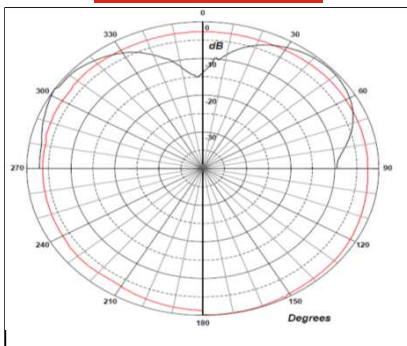
Typical Antenna Peak Gain

This is calculated by reference to standard gain horn antennas, and cross checked with reference to the antenna beamwidth, with an estimated error of +/- 0.8dB.

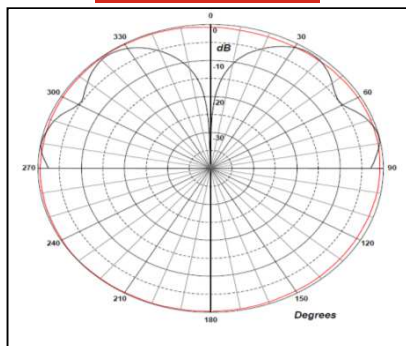




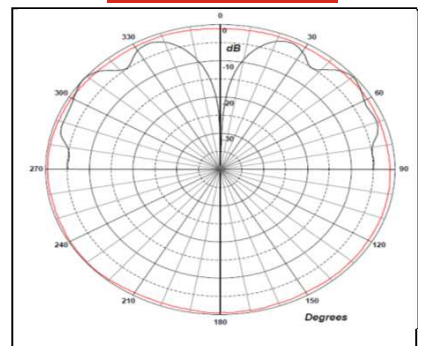
0.9 GHz



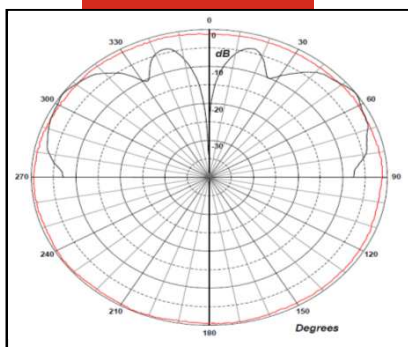
5 GHz



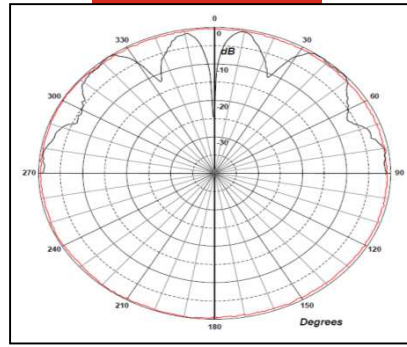
10 GHz



15 GHz



18 GHz



Note: connector at 180 degrees for Elev cut, Black = Elevation, Red = Azimuth