



### Features

- Frequency Range: 400~1000MHz
- High Gain: 80.0dB(typ)
- Output Limiting Level:12.0dBm(Typical)
- Standard Hermetic Package
- Operating Temperature Range: -55°C~+85°C

### Electrical (50 Ω, V<sub>CC</sub>=+5V, -55°C ≤ T<sub>A</sub> ≤ +85°C)

Parameter	Symbol	Unit	Guaranteed	Typical
Frequency range	f <sub>L</sub> ~f <sub>H</sub>	MHz	400~1100	400~1100
Gain	G <sub>p</sub>	dB	75	80
Gain Flatness	ΔG <sub>p</sub>	dB	±1.0	±0.5
Noise figure	F <sub>n</sub>	dB	8.0 <sup>Δ</sup>	6.0
Output Limiting level	P <sub>o</sub>	dBm	10.0	12.0
VSWR	VSWR	—	2.0:1	1.3:1
Phase Variation	ΔPH	°	±5	±3
Limiting	—	dB	-65~12	-65~12
Supply current	I <sub>CC</sub>	mA	450	400

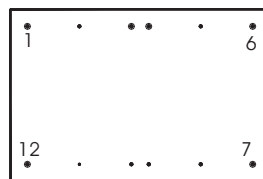
Note: “ Δ ” T<sub>A</sub>=24 ± 1°C.

### Maximum Ratings

Power supply: +6.0V<sub>DC</sub>

RF input: +20dBm

Storage Temp: +150°C



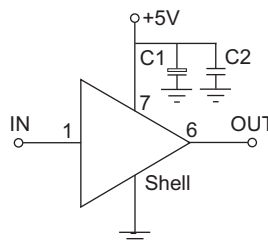
HD-28A-1

### Application Notes

1. Typical application shown as right,  
C<sub>1</sub>=3.3~22 μF, C<sub>2</sub>=1000~3300pF.

2. pin function:

- 1.input 6.output 7.power supply
- other:GND



### Typical Curves

