

# Bandpass Filter

## RBP-160+

50Ω 120 to 210 MHz



CASE STYLE: GP731  
PRICE: \$13.70 ea. QTY (10)

**+RoHS Compliant**  
The +Suffix identifies RoHS Compliance. See our web site for RoHS Compliance methodologies and qualifications

Reel Size	Devices/Reel
7"	10, 20, 50, 100, 200
13"	500, 1000

### Maximum Ratings

Operating Temperature	-40°C to 85°C
Storage Temperature	-55°C to 100°C
RF Power Input	0.5 W at 25°C

Permanent damage may occur if any of these limits are exceeded.

### Pin Connections

RF IN	2
RF OUT	6
GROUND	1,3,4,5,7,8

### Features

- high rejection
- good VSWR, 1.2:1 typ. @ passband
- small size 0.35" x 0.35"
- shielded case
- aqueous washable

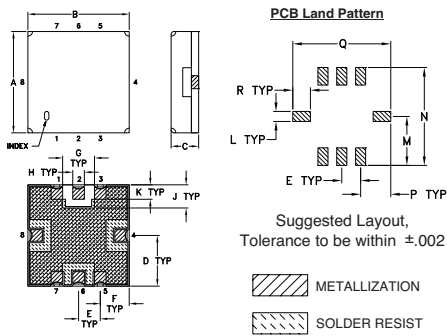
### Applications

- harmonic rejection
- transmitters / receivers
- navigation

### Bandpass Filter Electrical Specifications (T<sub>AMB</sub> = 25°C)

CENTER FREQ. (MHz)	PASSBAND (MHz) (Loss < 3dB) F1 - F2	STOPBANDS (MHz)				VSWR (:1)	
		Loss > 20dB F3 F4	Loss > 35dB F5 F6	Passband Max.	Stopband Typ.		
165	120 - 210	85 280	70 340 - 2000	1.6	18		

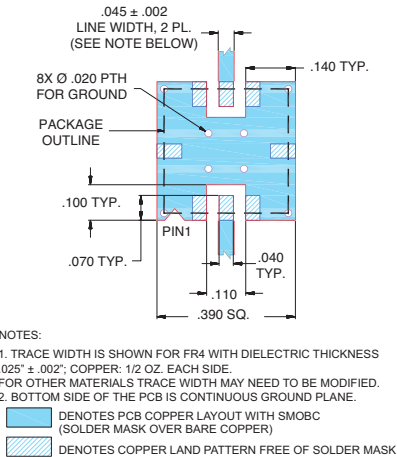
### Outline Drawing



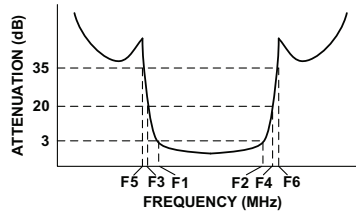
### Outline Dimensions (inch/mm)

A	B	C	D	E	F	G	H	J
.350	.350	.100	.175	.075	.100	.110	.040	.080
8.89	8.89	2.54	4.45	1.93	2.54	2.79	1.02	2.03
K	L	M	N	P	Q	R	wt	
.050	.040	.195	.390	.120	.390	.070	grams	
1.27	1.02	4.95	9.91	3.05	9.91	1.78	0.25	

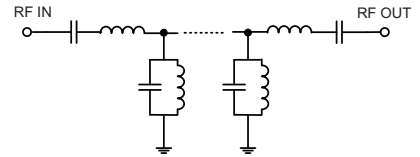
### Demo Board MCL P/N: TB-332 Suggested PCB Layout (PL-176)



### Typical Frequency Response



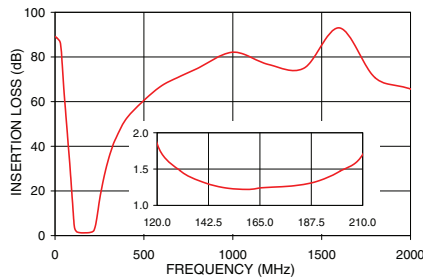
### Functional Schematic



### Typical Performance Data at 25°C

Frequency (MHz)	Insertion Loss (dB)	VSWR (:1)
0.3	89.19	1737.18
40	77.22	1737.18
70	44.89	144.77
85	29.73	51.10
100	12.83	11.03
105	7.19	4.62
110	3.46	1.85
120	1.85	1.29
165	1.24	1.17
210	1.70	1.24
220	2.49	1.72
230	5.47	4.08
250	15.72	17.05
280	27.86	39.49
340	43.18	75.53
1000	82.13	115.81
1400	74.97	78.97
2000	65.68	66.82

RBP-160+ INSERTION LOSS



RBP-160+ VSWR

