

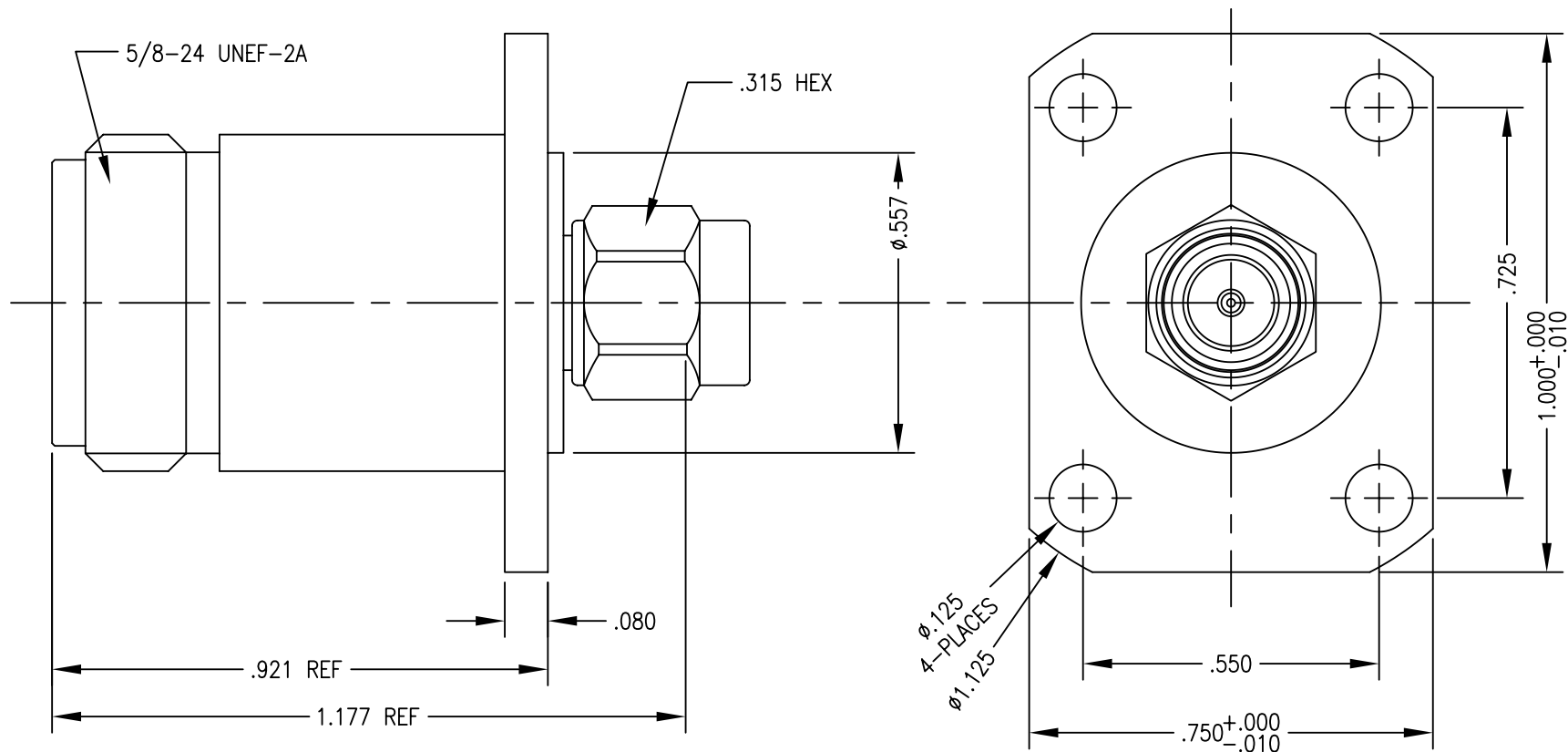
- 1.0 PERFORMANCE: (sea level)
- 1.1 FREQUENCY: DC-18 GHz
- 1.2 VSWR TYPICAL: (1.05, 3 GHz), (1.12, 11 GHz), (1.30, 18 GHz)
- 1.3 NOMINAL IMPEDANCE: 50 OHM
- 1.4 VOLTAGE RATING: 500 Vrms
- 1.5 DWV: 1500 Vrms @ 60 Hz
- 1.6 TEMPERATURE RANGE: -65/+165°C

- 2.0 MATERIALS: RoHS COMPLIANT
- 2.1 DIELECTRIC: PTFE
- 2.2 CONTACT & RETAINING RING: BeCu
- 2.3 GASKET: SILICONE RUBBER
- 2.4 BODY & COUPLING NUT: SS-303
- 3.0 FINISH: SEE TABLE

- 4.0 MECHANICAL
- 4.1 INTERFACES PER MIL-STD-348
- 4.2 COUPLING PROOF TORQUE: 15 IN\*LBS MAX
- 4.3 RECOMMENDED MATING TORQUE: 7~10 IN\*LBS
- 4.4 CONTACT RETENTION: 6 LBS MIN AXIAL TORQUE: N/A

DWG NO. OL-0910-98-1		REV. A
PART NUMBER 0910-98-PJ	BODY PASSIVATE	CONTACT GOLD

PLATING PER SAN-TRON SPEC. 7.3.1-8



DO NOT SCALE DRAWING

Rev.	Revisions	Disp.	Date	Dwn.	Appd.
A	RELEASE TO PRODUCTION	NEW	3/25/08	FSH	FSH
1	PRELIMINARY: DO NOT MFG	NEW	3/10/08		
Ref.:	REMOVE ALL BURRS AND SHARP EDGES .005 MAX.	INTERPRET PER	ASME Y14.5M-1994		
SK-					

THIS DRAWING CONTAINS CONFIDENTIAL INFORMATION PROPRIETARY TO SAN-TRON, INC. IT MUST NOT BE REPRODUCED OR DISCLOSED TO OTHERS OR USED IN ANY OTHER WAY, IN WHOLE OR PART EXCEPT AS AUTHORIZED IN WRITING BY SAN-TRON, INC.

UNLESS OTHERWISE SPECIFIED:  
ALL DIMENSIONS ARE IN INCHES.  
ALL DIMENSIONS ARE AFTER PLATING.  
.XXX = ±.005 ALL MACHINED SURFACES  $\frac{32}{\sqrt{\text{MAX.}}}$   
.XX = ±.01 ANG. ±1/2° FRACTIONAL = ±1/64  
Ⓢ.004 MAX. TIR

THIRD ANGLE PROJECTION

DWN	FSH	3/10/08
CHKD	SJS	3/11/08
APPR	FSH	3/25/08

**SAN-TRON, INC.**  
 4 NEWBURYPORT TPK. IPSWICH MA USA 01938  
 TEL: 978-356-1585 FAX: 978-356-1573  
 WWW.SANTRON.COM E MAIL: santron@santron.com

TITLE ADAPTER, N (F)- SMA (M)- A -SP  
 FLANGE 1.00X.75

MATERIAL: FINISH: SEE TABLE- ALLOW FOR .0002/.0004 PLATING

CAGE CODE: 50896 DWG NO. OL-0910-98-1 REV. A

SCALE X:X