

Plug-In Low Pass Filter

PLP-7-75+

75Ω DC to 11 MHz

Maximum Ratings

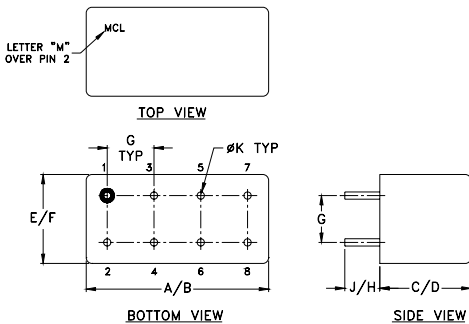
Operating Temperature	-55°C to 100°C
Storage Temperature	-55°C to 100°C
RF Power Input	0.5W max.

Permanent damage may occur if any of these limits are exceeded.

Pin Connections

INPUT	1
OUTPUT	8
GROUND	2,3,4,5,6,7
CASE GROUND	2,3,4,5,6,7

Outline Drawing



Outline Dimensions (inch/mm)

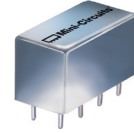
A	B	C	D	E	F
.770	.800	.385	.400	.370	.400
19.56	20.32	9.78	10.16	9.40	10.16
G	H	J	K	wt	
.200	.508	.14	.031	grams	
5.08	5.08	3.56	0.79	5.2	

Features

- rugged welded case, hermetic
- other standard and custom PLP models available with wide selection of fco

Applications

- test equipment
- lab use
- transmitters/receivers
- military/hi-rel applications



CASE STYLE: A01

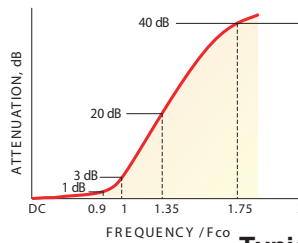
+RoHS Compliant

The +Suffix identifies RoHS Compliance. See our web site for RoHS Compliance methodologies and qualifications

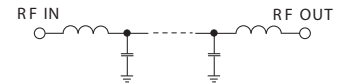
Low Pass Filter Electrical Specifications

PASSBAND (MHz)	fco (MHz) Nom.	STOPBAND (MHz)		VSWR (:1)	
		(loss > 20 dB)	(loss > 40 dB)	Passband Typ.	Stopband Typ.
DC-11	8	11-15	15-200	1.7	18

typical frequency response

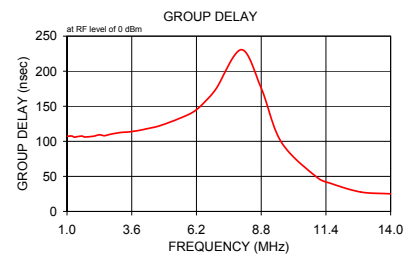


electrical schematic



Typical Performance Data

Frequency (MHz)	Insertion Loss (dB)		Return Loss (dB)	Frequency (MHz)	Group Delay (nsec)
	\bar{x}	σ			
1.00	0.06	0.01	27.26	1.00	107.24
1.90	0.09	0.02	26.75	1.10	107.38
2.80	0.11	0.01	32.01	1.20	107.50
3.60	0.16	0.03	30.71	1.30	105.85
4.50	0.22	0.05	24.86	1.40	106.62
5.40	0.26	0.04	25.76	1.60	107.46
6.30	0.32	0.04	25.44	1.70	106.19
7.00	0.46	0.07	22.50	1.90	106.59
8.00	2.33	0.89	8.77	2.10	107.52
9.00	10.19	1.45	1.18	2.30	109.35
9.40	14.08	1.33	0.63	2.50	108.05
9.80	17.83	1.18	0.40	2.70	109.75
10.20	21.33	1.06	0.30	2.90	111.16
10.60	24.60	0.97	0.24	3.20	112.80
11.00	27.65	0.91	0.21	3.50	113.53
12.00	34.53	0.87	0.17	3.90	115.60
12.60	38.24	0.89	0.15	4.20	117.83
13.20	41.68	0.91	0.14	4.60	120.94
13.80	44.93	0.87	0.13	5.00	125.58
14.40	48.03	0.85	0.12	5.50	132.47
15.00	51.02	0.86	0.11	6.10	142.49
16.00	55.73	1.23	0.11	6.60	158.58
39.00	74.24	0.82	0.18	7.00	175.53
62.00	74.55	1.78	0.32	8.00	230.76
85.00	74.27	1.16	0.46	8.80	175.89
108.00	73.91	0.74	0.51	9.60	99.26
131.00	74.48	0.58	0.51	11.00	49.80
154.00	74.76	2.43	0.51	11.60	39.93
177.00	72.74	1.60	0.50	12.80	27.72
200.00	73.75	2.71	0.51	14.00	25.14



Notes

- Performance and quality attributes and conditions not expressly stated in this specification document are intended to be excluded and do not form a part of this specification document.
- Electrical specifications and performance data contained in this specification document are based on Mini-Circuits' applicable established test performance criteria and measurement instructions.
- The parts covered by this specification document are subject to Mini-Circuits standard limited warranty and terms and conditions (collectively, "Standard Terms"); Purchasers of this part are entitled to the rights and benefits contained therein. For a full statement of the Standard Terms and the exclusive rights and remedies thereunder, please visit Mini-Circuits' website at www.minicircuits.com/MCLStore/terms.jsp

