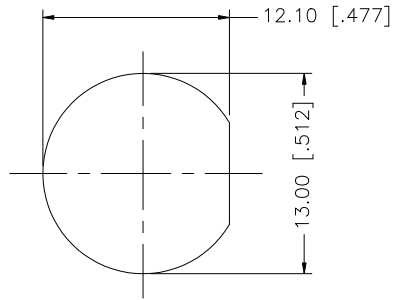
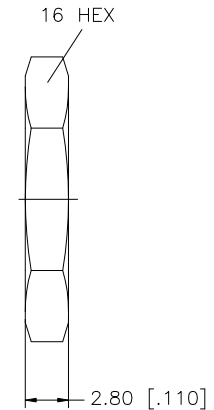
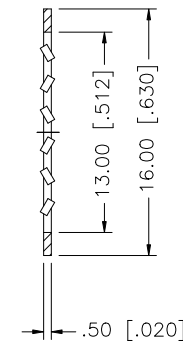
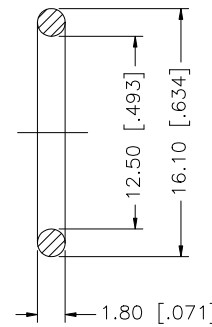
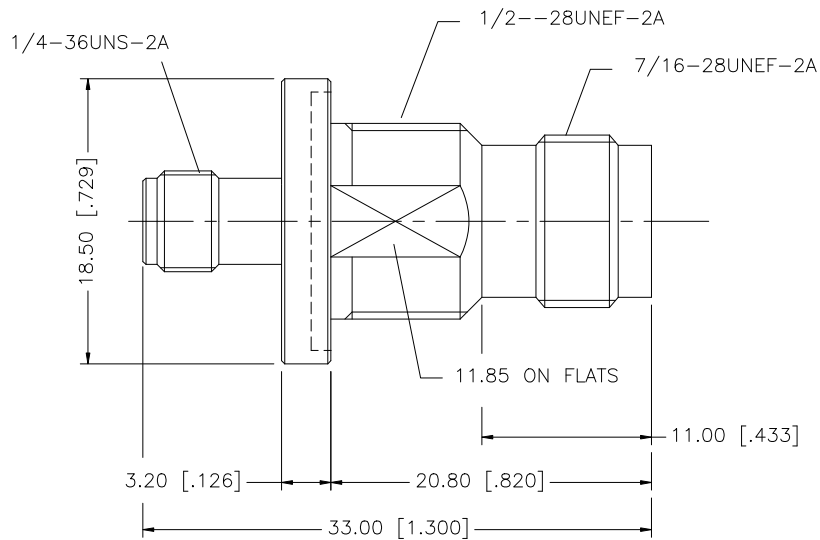


REV.	DATE	ECR NO.	DESCRIPTION
NC	01/05/09	-	INITIAL RELEASE



RECOMMENDED MOUNTING HOLE



QTY	DESCRIPTION	MATERIAL	FINISH	QTY
6	HEX NUT	BRASS	NICKEL	1
5	LOCK WASHER	BRASS	NICKEL	1
4	GASKET	SILICONE	RED	1
3	CONTACT PIN	BER. COPPER	GOLD	1
2	INSULATOR	PTFE	NATURAL	1
1	BODY	BRASS	NICKEL	1

UNLESS OTHERWISE SPECIFIED DIMENSIONS ARE IN MILLIMETERS. DIMENSIONS IN [] ARE IN INCHES AND FOR CUSTOMER REFERENCE ONLY.

UNLESS OTHERWISE SPECIFIED TOLERANCES FOR MILLIMETERS ARE:
0.5 - 8mm ± 0.20mm
8 - 30mm ± 0.40mm
30 - 120mm ± 0.50mm

UNLESS OTHERWISE SPECIFIED TOLERANCES FOR INCHES ARE:
.020 - .315 = ± 0.007"
.315 - 1.180 = ± 0.015"
1.180 - 4.724 = ± 0.020"

DO NOT SCALE DRAWING

APPROVALS	DATE
DRAWN GRS	01/05/09
CHECKED	
ISSUED	
SHEET 1 OF 1	
CAD FILE	C:/242/242178-11.DWG

Amphenol Connex

PART DESCRIPTION
SMA JACK TO TNC BULKHEAD JACK ADAPTER

PART NO.
242178-11

DWG. NO.	242178-11.DWG	REV.	NC	SIZE	A	SCALE	NA
----------	---------------	------	----	------	---	-------	----