

1.0 PERFORMANCE

- 1.1 FREQUENCY RANGE: DC-11GHz
- 1.1 VSWR: (1.10, 3GHz), (1.17, 6GHz), (1.32, 11 GHz)
- 1.2 VOLTAGE RANGE: 500V RMS (sea level)
- 1.3 NOMINAL IMPEDANCE: 50 OHMS
- 1.4 DWV: 1500V RMS @ 60Hz (sea level)
- 1.5 TEMPERATURE RANGE: -65°C TO +165°C

2.0 MATERIALS

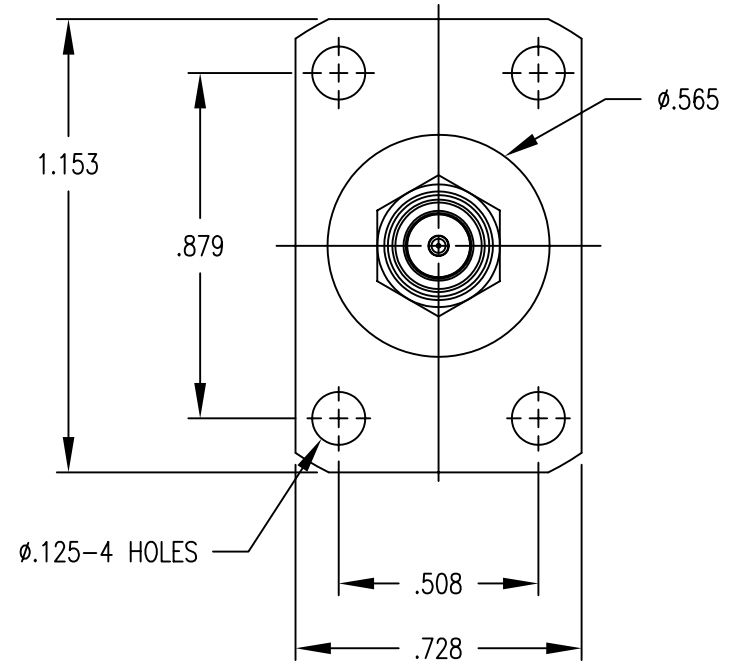
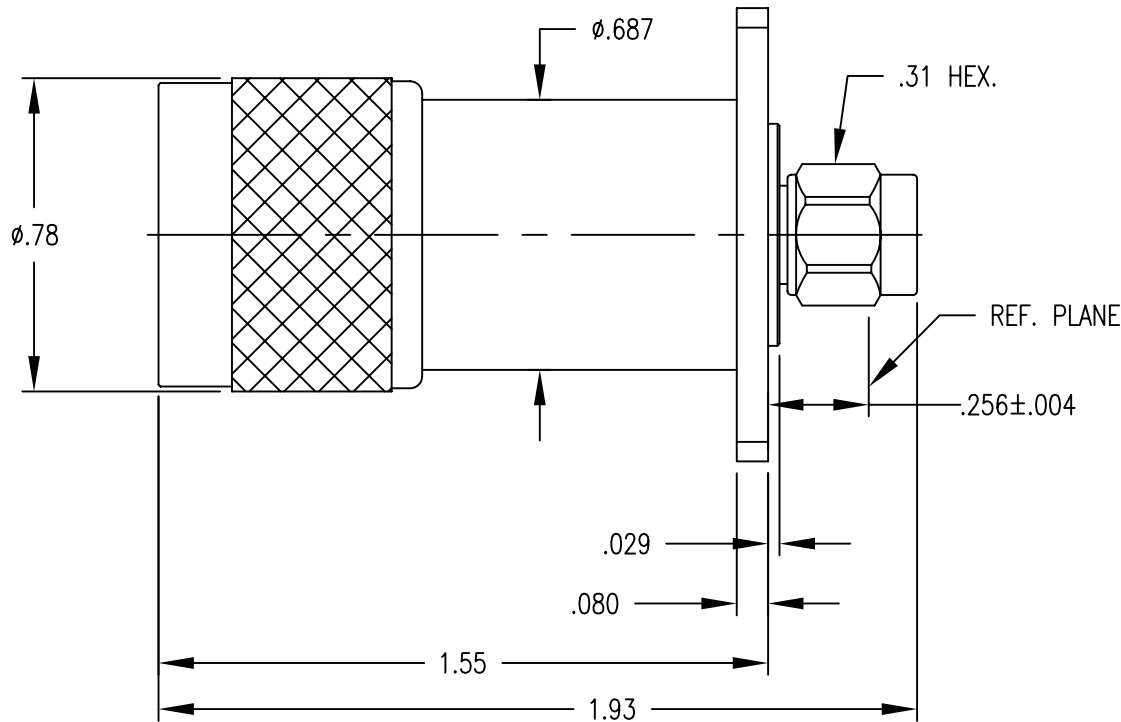
- 2.1 DIELECTRIC: TEFLON, ASTM-D-1710
- 2.2 CENTER CONTACT: BRASS, ASTM-B-16

2.3 LOCKING RINGS: PHOSPHOR BRONZE, ASTM-B-159, ALLOY 510

- AND BERYLLIUM COPPER, ASTM-B-194
- 2.4 ALL OTHER METAL PARTS: BRASS, ASTM-B-16
- 2.5 GASKETS: SILICON RUBBER, ZZ-R-765, GR. 50, RED
- 3.0 FINISHES

- 3.1 CENTER CONTACT: GOLD PLATED
- 3.2 ALL OTHER METAL PARTS: NICKEL PLATED
- 4.0 MECHANICAL
- 4.1 THIS ADAPTER WILL MATE WITH CONNECTORS AND ADAPTERS THAT HAVE MIL-STD-348 INTERFACES

| | |
|-------------------------|-----------|
| DWG NO. OL-0910-59-1 | REV. A |
|-------------------------|-----------|




| | | | | | |
|------|-------------------|----------|------|----------|--|
| | | | | | |
| | | | | | |
| | | | | | |
| A | ORIGINAL | 8/15/02 | | | |
| Rev. | Revisions | Date | Dwn. | Appd. | |
| | RECOM. STOCK SIZE | FT/M PCS | | QTY REQD | |

PROPRIETARY
THIS DRAWING CONTAINS CONFIDENTIAL INFORMATION
PROPRIETARY TO SAN*TRON INC. IT MUST NOT BE
REPRODUCED OR DISCLOSED TO OTHERS OR USED IN
ANY OTHER WAY, IN WHOLE OR PART EXCEPT AS
AUTHORIZED IN WRITING BY SAN*TRON INCORPORATED.

REMOVE ALL BURRS AND SHARP
EDGES .005 MAX.
UNLESS OTHERWISE STATED
ALL DIMENSIONS ARE IN INCHES
AND APPLY AFTER PLATING

| | | | |
|------------------|------|-----|---------|
| UNSPECIFIED TOL. | DWN | JMB | 8/15/02 |
| .XX ± .020 | CHKD | SJS | 8/15/02 |
| .XXX ± .010 | APPR | CHS | 8/15/02 |
| FRAC. ± 1/64 | | | |

CONCENTRICITY .004 TIR
ALL MACHINED SURFACES \checkmark 63



SAN • TRON, INC.

4 NEWBURYPORT TPK, IPSWICH, MA 01938

TITLE ADAPTER, STRAIGHT, PANEL MOUNTED, N(M) TO SMA(M)

| | |
|---------------------------|-------------------------|
| MATERIAL: SEE NOTE 2.0 | FINISH: SEE NOTE 3.0 |
|---------------------------|-------------------------|

| | | |
|----------------|-------------------------|-----------|
| FSCM NO. 50896 | DWG NO. OL-0910-59-1 | REV. A |
| SCALE 2:1 | | |