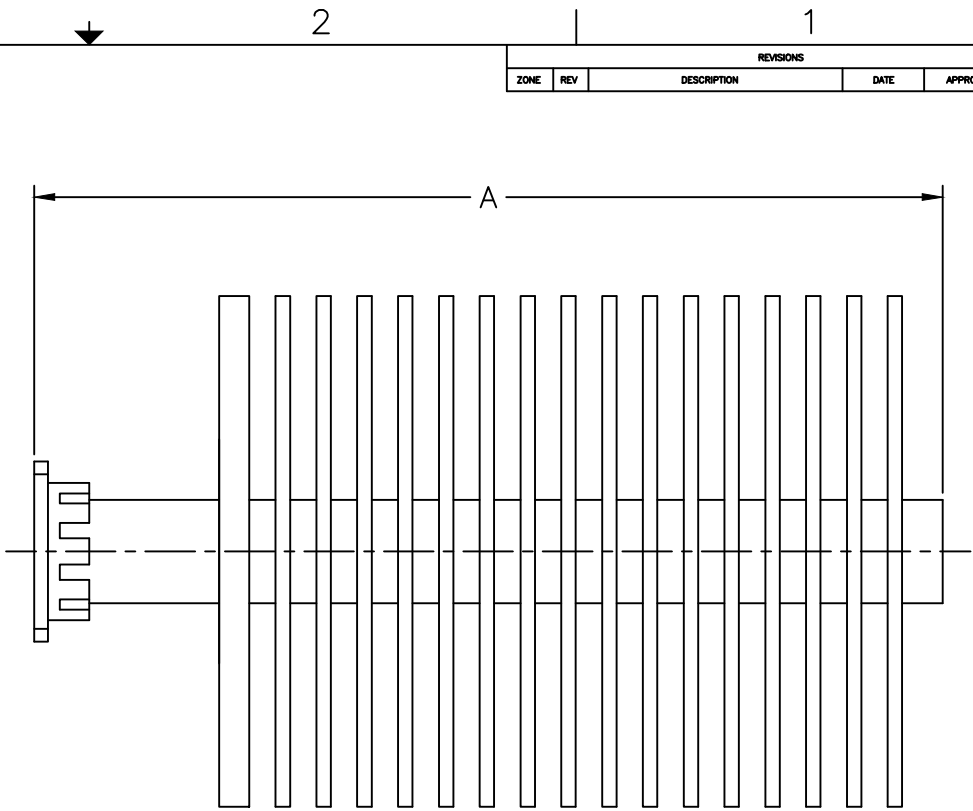
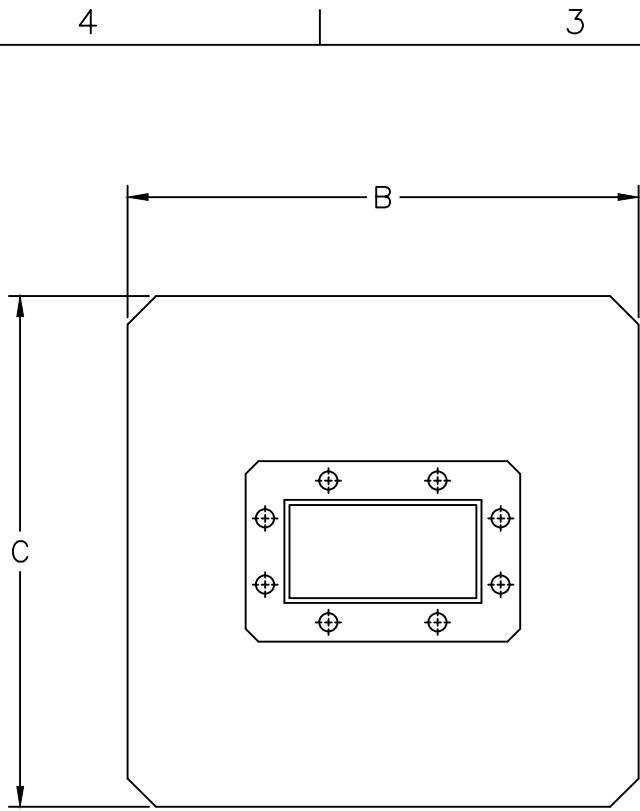


REVISIONS				
ZONE	REV	DESCRIPTION	DATE	APPROVED



MODEL	FREQ. (GHz)	-A-"	-B-"	-C-"
WM-1-F	1.12-1.7	13.00	11.00	9.00
WM-2-F	1.7-2.6	12.00	6.00	6.00
WM-3-F	2.3-3.3	12.00	6.00	6.00
WM-4-F	2.6-3.95	12.00	6.00	5.00
WM-5-F	3.4-4.95	10.63	5.00	5.00
WM-6-F	3.95-5.85	9.00	4.50	4.50
WM-7-F	4.9-7.05	9.00	4.50	4.50
WM-8-F	5.85-8.2	8.50	4.00	4.00
WM-8H-F	5.85-8.2	9.00	4.50	4.50
WM-9-F	7.05-10	8.00	4.00	4.00

MODEL	FREQ. (GHz)	-A-"	-B-"	-C-"
WM-10-F	7-11	6.50	3.50	3.50
WM-11-F	8.2-12.4	5.50	3.50	3.50
WM-12-F	10-15	5.00	3.50	3.50
WM-12H-F	10-15	5.00	4.50	4.50
WM-13-F	12.4-18	4.50	3.00	3.00
WM-18-F	15-22	4.13	2.25	2.25
WM-18H-F	15-22	4.50	3.00	3.00
WM-14-F	18-26.5	4.50	2.25	2.25
WM-19-F	22-33	4.00	2.00	2.00
WM-15-F	26.5-40	4.00	2.00	2.00
WM-16-F	33-50	3.00	1.50	1.50

PART NUMBER = WM-X-F
 -X = MODEL SERIES
 -F = FLANGE TYPE (1, 2, 6, OR 7)

Rectangular W/G Termination, High Power - WM Series
 Full waveguide frequency range.
 Units pressure tested to 30 psi.
 Low outgassing characteristics.
 VSWR: 1.10 max.
 WM Terminations are manufactured from 6061 Aluminum.
 Finish: Hi-Temp black paint.

MATERIAL:	DRAWING: Paiboon Luekhamhan	DATE: 12-19-2013	MICROWAVE COMMUNICATIONS LABORATORIES INC. 7225 30TH AVE. N. SAINT PETERSBURG, FL 33710 TEL: (727) 344-6254 FAX: (727) 381-8116 HTTP://WWW.MCLI.COM	SCALE: N/A
				SHEET: N/A
UNLESS OTHERWISE SPECIFIED: TOLERANCES IN (INCHES) OR (mm) (MILLIMETERS) FRACTIONS: ± 1/64 DECIMALS: ±.02 ±.009 ANGLE: ±1/2°			DRAWING TITLE: WAVEGUIDE TERMINATION, HIGH POWER	
APPROVED: T. Nguyen DATE: 12-19-2013			PART NO. WM-X-F	
REFERENCE: SEE SPECIFICATIONS FOR THIS DRAWING IS PROPERTY OF MCLI AND IS NOT TO BE REPRODUCED WITHOUT PERMISSION FROM MICROWAVE COMMUNICATIONS LABORATORIES INC. (MCLI)			CAGE CODE: OD2L5	SIZE: N/A
			REV: N/A	DWG NO. 84679
DO NOT SCALE THE DRAWING				