



RF-LAMBDA

The power beyond expectations

RKT2G2A60

ROTARY KNOB MANUAL CONTROL STEP ATTENUATOR (DC-2GHZ 60DB RANGE)

Product description

- Very small package and broadband performance
- Continuous variable attenuation during operation
- Excellent Repeatability and Long Life Switch
- Low Deviation from Nominal Value
- 50Ω impedance standard upon request
- High power is available upon request
- Custom Configurations Available Upon Request.



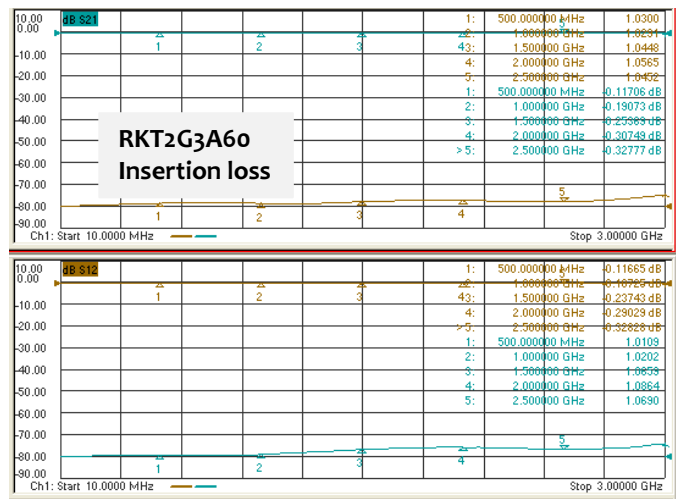
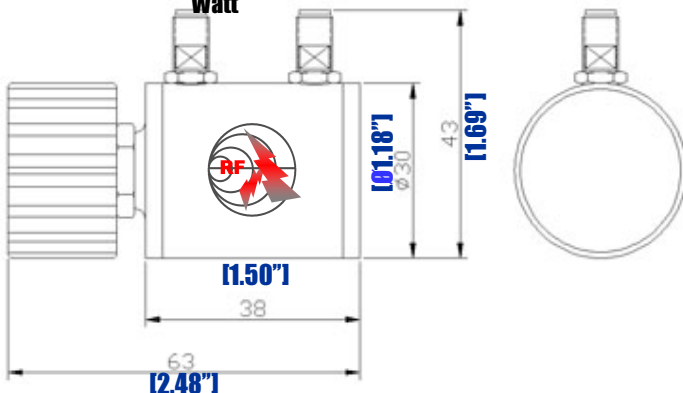
Applications:

Include Communication, 3G, Digital Transmission, Radar, Military, Broadcast & Television, science & Research department etc.

Part Number	Frequency	Power (Watts)	Attenuation Range (dB)	Attenuation Step (dB)	VSWR max.	Insertion Loss (dB)	Accuracy (dB)
RKT2G2A60	DC-2GHz	2	60	10	1.20	<0.30	± 0.30

PN: **RKT 2 G X A 60**

Manual Power Control Handle In Watt
 Freq Unit GHz
 Freq Number
 Product Type
 Attenuation Range



Connector: SMA type, weight: 250g

Temperature (Operational): -10° C~+50° C (Storage) -40° C~+70° C

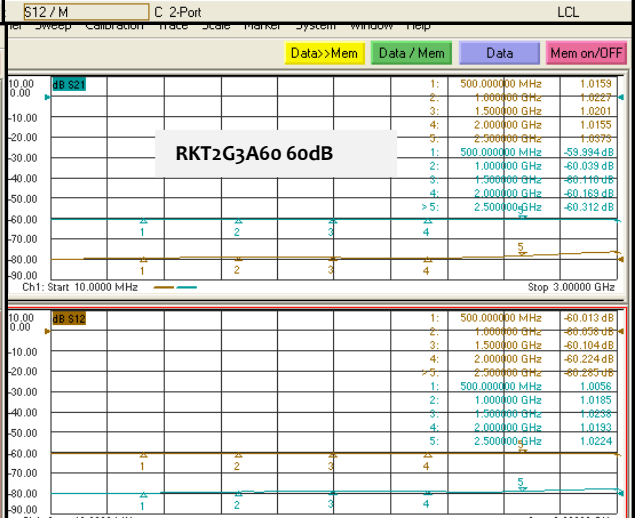
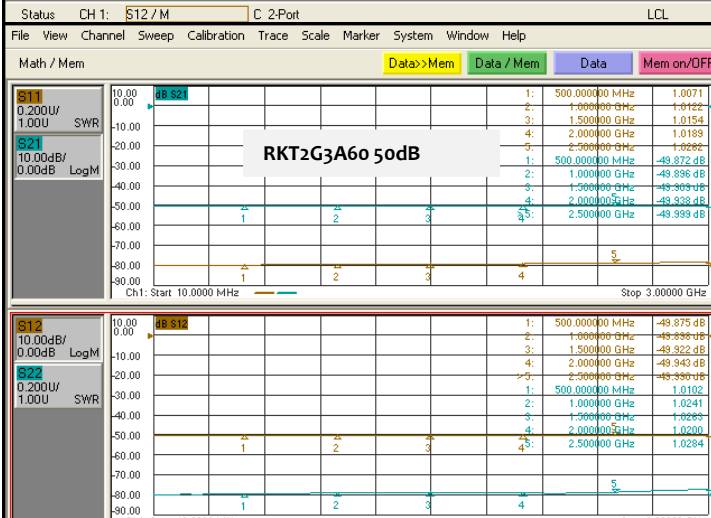
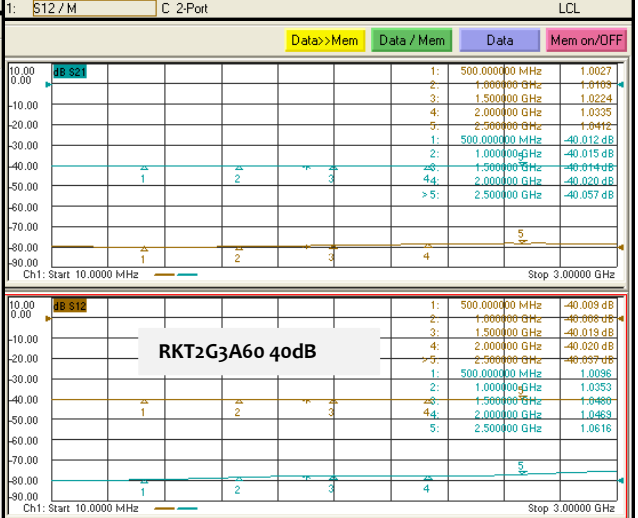
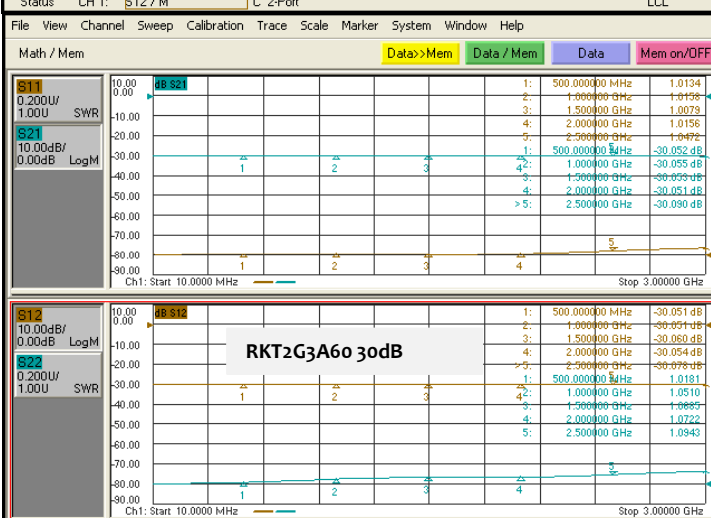
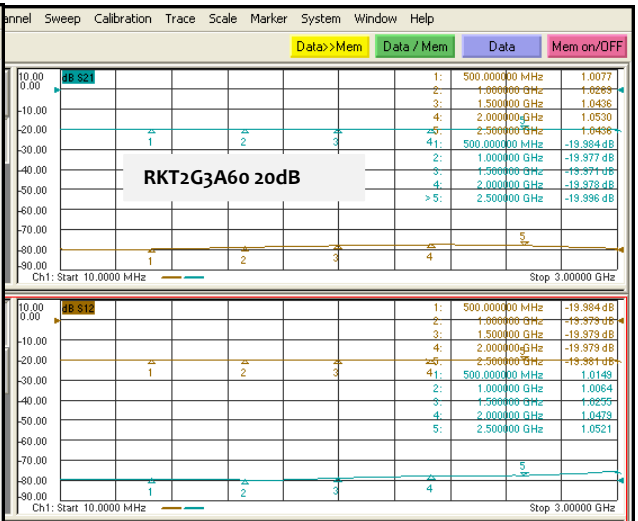
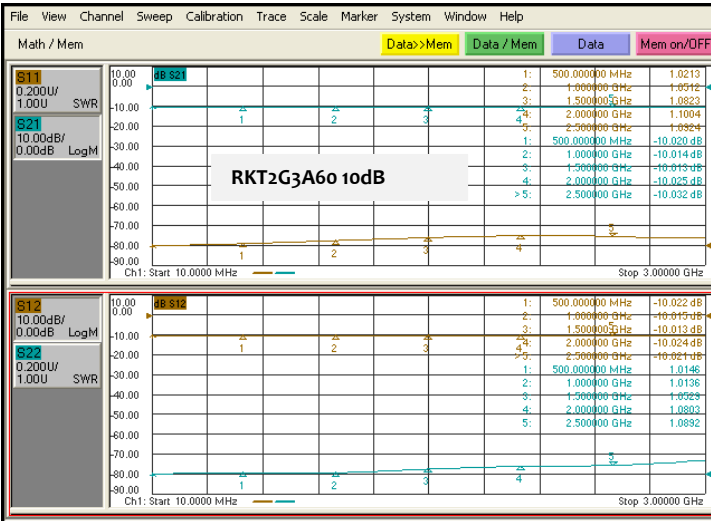
MANUAL CONTROL ROTARY ATTENUATOR (DC-2GHZ 60DB RANGE)



RF-LAMBDA

The power beyond expectations

RKT2G2A60



Status CH1: S12 / M C 2-Port LCL

Status CH1: S12 / M C 2-Port LCL

MANUAL CONTROL ROTARY ATTENUATOR (DC-2GHz 60DB RANGE)