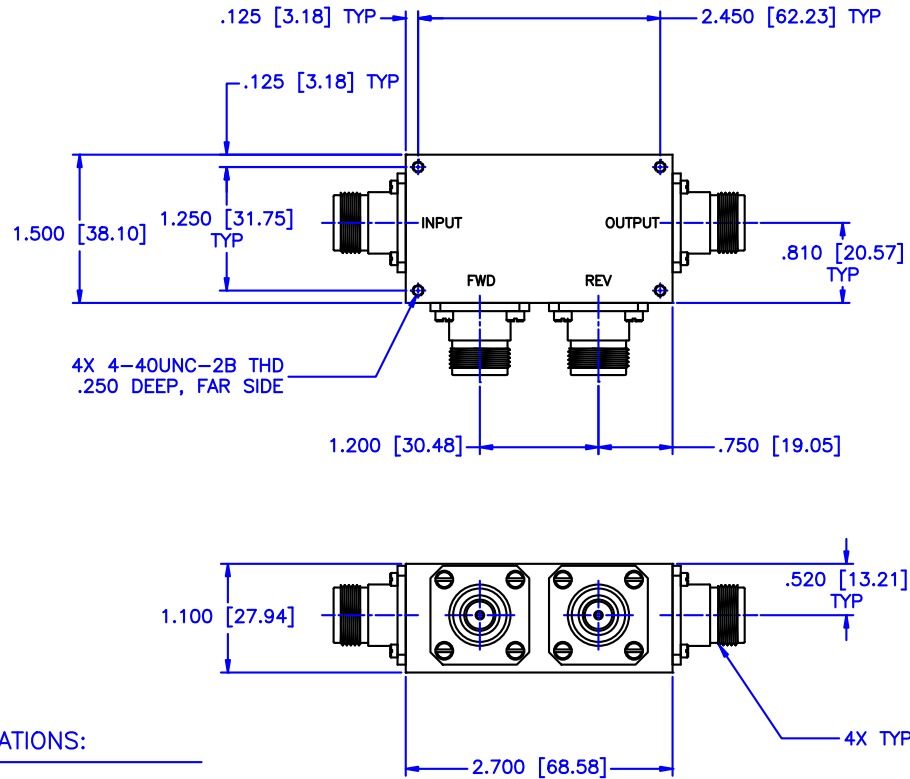


REVISIONS				
ZONE	REV	DESCRIPTION	DATE	APPROVED



SPECIFICATIONS:

- FREQUENCY RANGE: 1-2000 MHz
- COUPLING: 30dB
- FLATNESS: ±1.0dB
- INSERTION LOSS: 1.25dB Max.
- DIRECTIVITY: 18dB Min.
- VSWR PRIME LINE: 1.35:1 Max.
- POWER: 50 Watts CW

MATERIAL:		MCLI MICROWAVE COMMUNICATIONS LABORATORIES INC. 7255 30TH AVE. N. SAINT PETERSBURG, FL 33710 TEL: (727) 344-6254 FAX: (727) 381-6116 http://WWW.MCLI.COM	SCALE: N/A
DRAWN: Paiboon Luekhamhan			SHEET: N/A
DATE: 12-22-2010		UNLESS OTHERWISE SPECIFIED: TOLERANCES IN (INCHES) OR [mm] (MILLIMETERS) FRACTIONS: ± 1/64 DECIMALS: ±.01 ±.005 ANGLE: ±1/2°	DRAWING TITLE: 30dB DUAL DIRECTIONAL COUPLER
APPROVED: T. Nguyen		DATE: 12-22-2010	PART NO.: HDL-42-30
THIRD ANGLE PROJECTION		CAGE CODE: OD2L5	SIZE: C
		REV: N/A	DWG NO.: 85174
		DO NOT SCALE THE DRAWING	