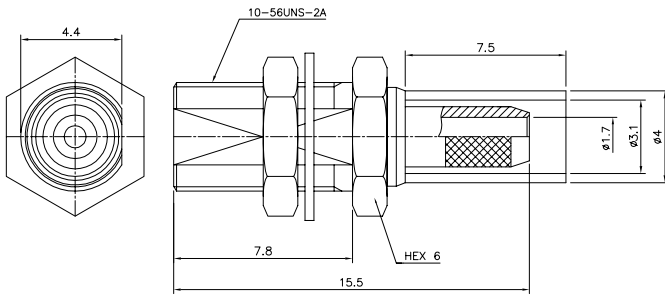
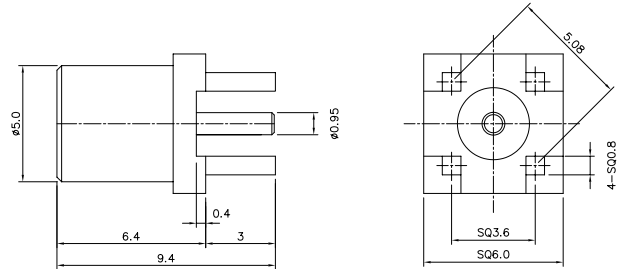


**(MCX Bulkhead Jack
50 Ohm
for Cable RG316)**



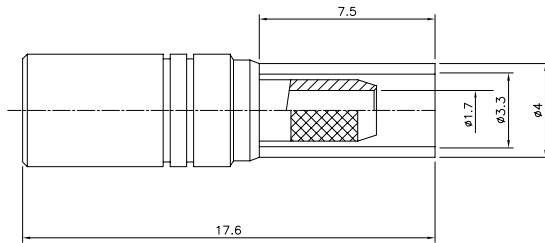
PART #
MCX 14000-1001

**(MCX Straight PCB Jack
50 Ohm)**



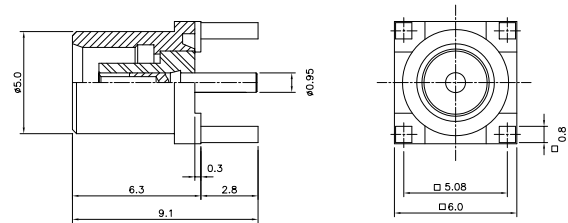
PART #
MCX 14000-1004

**(MCX Straight Jack
for Cable RG316D/S)**



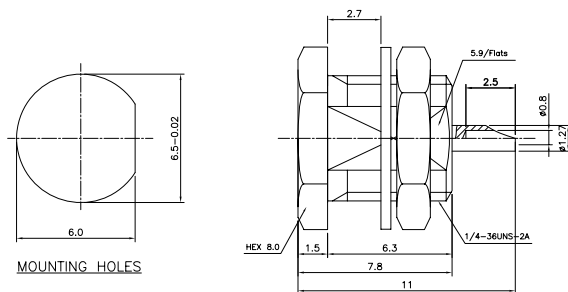
PART #
MCX 14000-1002

**(MCX Straight PCB Jack
50 Ohm)**



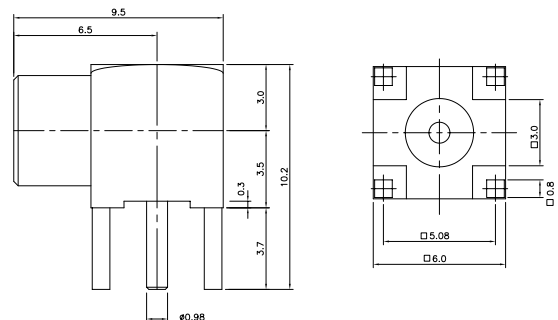
PART #
MCX 14000-1005

**(MCX Bulkhead Jack Receptacle
Solder Pot)**



PART #
MCX 14000-1003

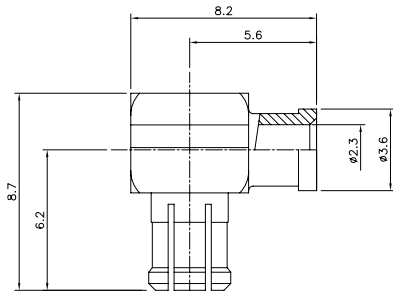
(MCX Straight Angle PCB Jack)



PART #
MCX 14000-1006

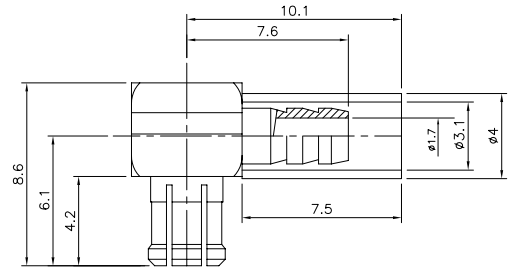


(MCX Right Angle Plug
50 Ohm
for Cable UT085)



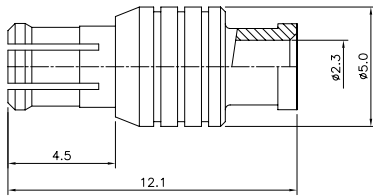
PART #
MCX 14000-2001

(MCX Right Angle Plug
50 Ohm
for Cable RG316)



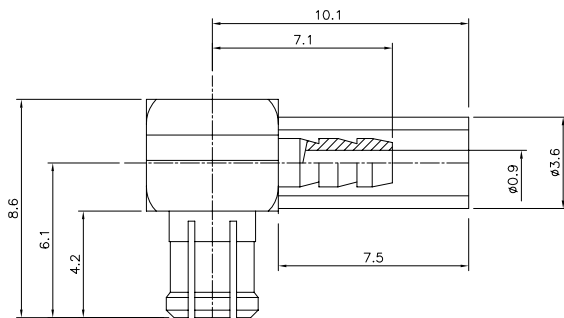
PART #
MCX 14000-2004

(MCX Straight Plug
for Cable UT085
Non-Magnetic)



PART #
MCX 14000-2002

(MCX Right Angle Plug
50 Ohm
for Cable RG178)



PART #
MCX 14000-2003