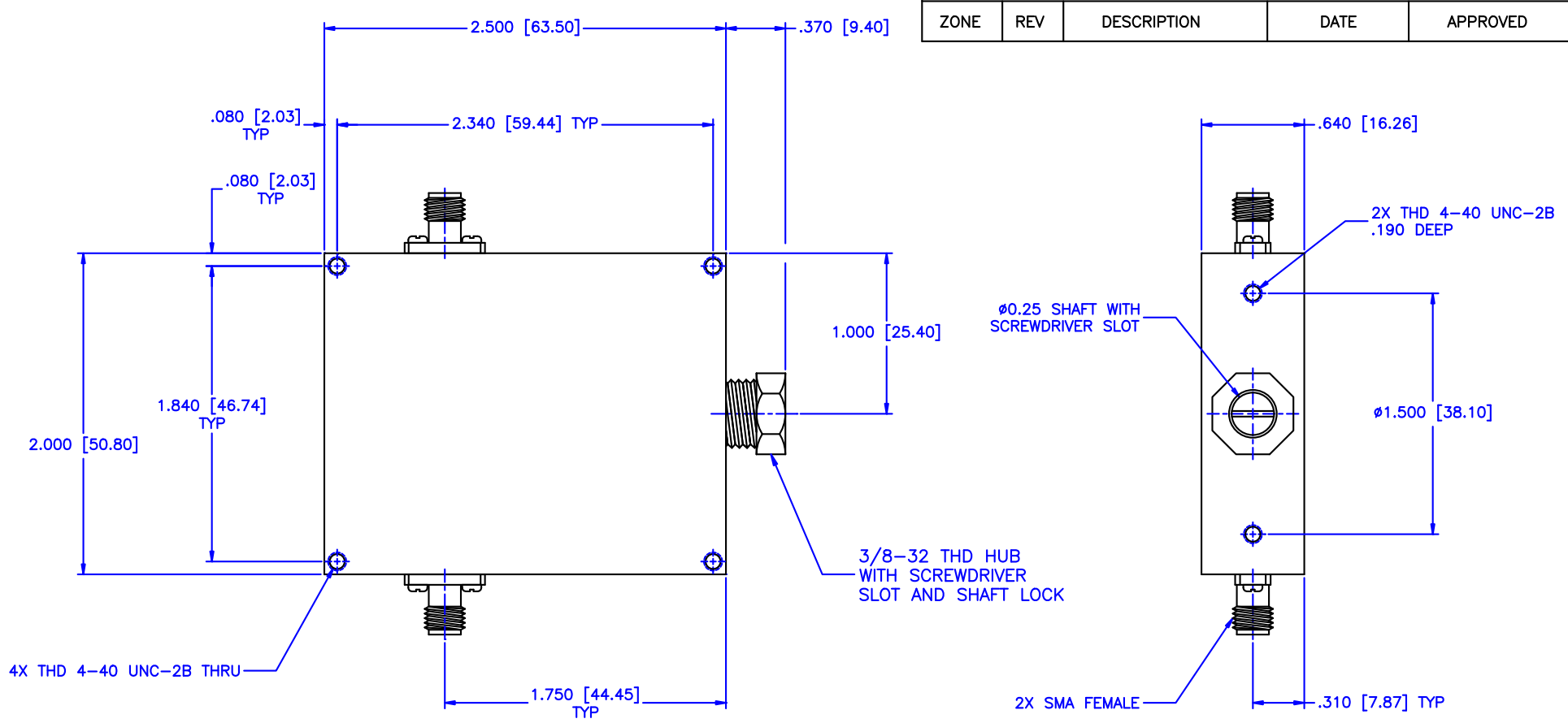


REVISIONS				
ZONE	REV	DESCRIPTION	DATE	APPROVED



Specifications:

Frequency Range: 1.7-2.7 GHz
 Attenuation: 40dB
 Insertion Loss: 0.5 Max.
 VSWR: 1.50:1
 RF Power: 7W Average, 3kW Peak

Environmental:

Temperature range: -55°C to +110°C
 Shock: 15 G's, 11mS, 1/2 sine
 Vibration: 3 G's overall
 Altitude: 40,000 ft. Survival 25,000ft Operating

MATERIAL:		MCLI MICROWAVE COMMUNICATIONS LABORATORIES INC. 7255 30TH AVE. N. SAINT PETERSBURG, FL 33710 TEL: (727) 344-6254 FAX: (727) 381-6116 http://WWW.MCLI.COM	SCALE:	N/A
			SHEET:	N/A
UNLESS OTHERWISE SPECIFIED: TOLERANCES IN (INCHES) OR [mm] (MILLIMETERS) FRACTIONS: $\pm 1/64$ DECIMALS: $\pm 0.01 \pm 0.005$ ANGLE: $\pm 1/2^\circ$		DRAWING TITLE: CONTINUOUSLY VARIABLE ATTENUATOR		
DRAWN: Paiboon Luekhamhan		PART NO. CVA29-30		
DATE: 02-08-2011		CAGE CODE: OD2L5		
APPROVED: T. Nguyen		SIZE: A		
DATE: 02-08-2011		REV: N/A		
THIRD ANGLE PROJECTION		DWG NO. 85391		
		DO NOT SCALE THE DRAWING		