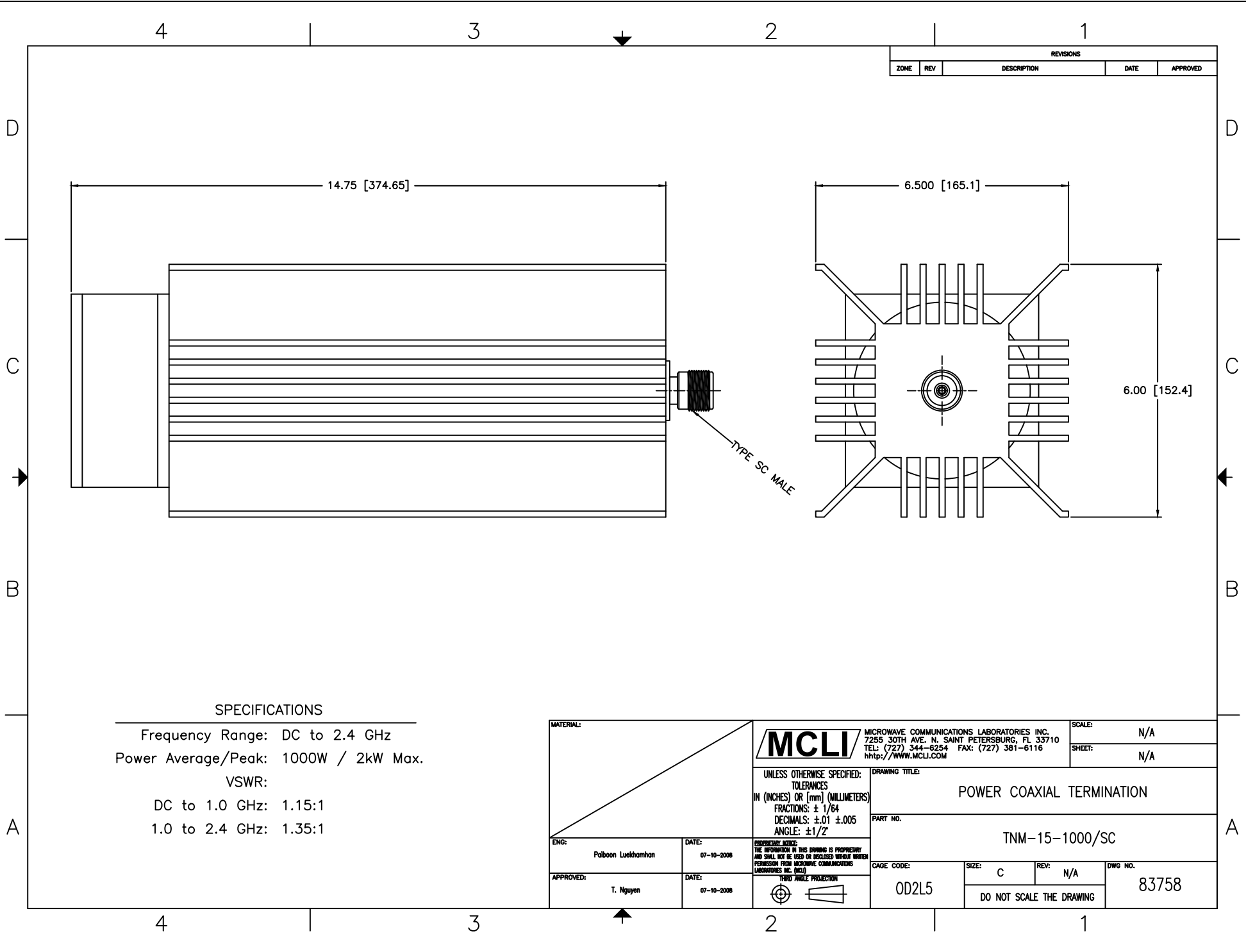


REVISIONS				
ZONE	REV	DESCRIPTION	DATE	APPROVED



SPECIFICATIONS

Frequency Range: DC to 2.4 GHz
 Power Average/Peak: 1000W / 2kW Max.
 VSWR:
 DC to 1.0 GHz: 1.15:1
 1.0 to 2.4 GHz: 1.35:1

MATERIAL:			MICROWAVE COMMUNICATIONS LABORATORIES INC. 7255 30TH AVE. N. SAINT PETERSBURG, FL 33710 TEL: (727) 344-6254 FAX: (727) 381-6116 http://www.MCLI.COM		SCALE: N/A
UNLESS OTHERWISE SPECIFIED: TOLERANCES IN (INCHES) OR [mm] (MILLIMETERS) FRACTIONS: ± 1/64 DECIMALS: ±.01 ±.005 ANGLE: ±1/2°			DRAWING TITLE: POWER COAXIAL TERMINATION		SHEET: N/A
ENG: Paiboon Luethamhan DATE: 07-10-2008		PART NO.: TNM-15-1000/SC		DWG NO.: 83758	
APPROVED: T. Nguyen DATE: 07-10-2008		CAGE CODE: OD2L5		SIZE: C REV: N/A DO NOT SCALE THE DRAWING	THIRD ANGLE PROJECTION