

Passband 1: DC to 80 MHz

Passband 2: 110 to 1000 MHz

# Diplexer (LP/HP) WDJ7+7-DC-80/110-1000-60

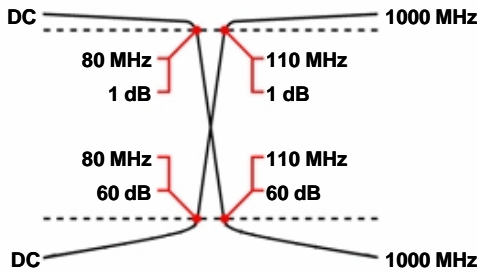
Passband 1 Isolation: 60 dB

Passband 2 Isolation: 60 dB

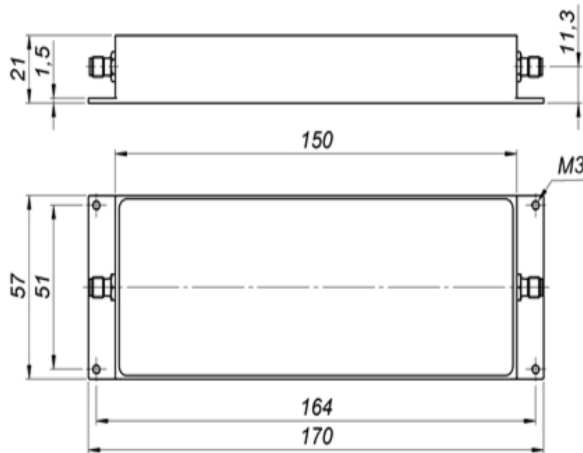
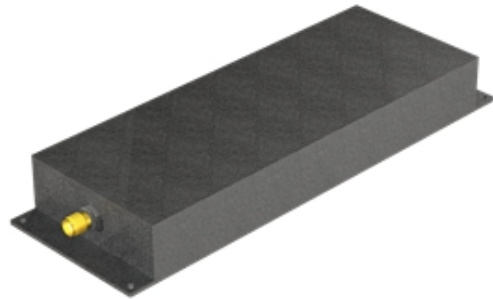
## Specifications

	Band 1 (Lowpass)	Band 2 (Highpass)
Passbands:	DC to 80 MHz	110 to 1000 MHz
Passband Insertion Loss:	1 dB max.	1 dB max.
Passband Return Loss:	14 dB min.	14 dB min.
Stopbands:	110-1000 MHz	DC-80 MHz
Stopband Attenuation:	60 dB min.	60 dB min.
Operating Temperature:	15 °C to 45 °C	
Power Handling:	max. 20 W CW into a 2:1 VSWR (Please see our <a href="#">warranty</a> in this regard)	
Dimensions (L x W x H):	150 x 57 x 21 mm (plus connectors and flanges)	
Approx. Weight:	0.4 kg	
Mounting Provision:	7.5 mm flanges on both ends with M3 holes	
Connector Common:	- Please choose -	
Connector Band 1:	- Please choose -	
Connector Band 2:	- Please choose -	

## Typical Performance



## 7+7 Section LC Design



©2015 Wainwright Instruments. All rights reserved.

## Euro Prices

(USD Prices will be quoted for US-based customers only)

1 - 4 pcs:	€ 1044
5 - 9 pcs:	€ 940
10 - 24 pcs:	€ 846

## Delivery Terms

FCA Andechs (free carrier) according to **Incoterms 2010**  
 In Deutschland liefern wir frachtfrei gemäß CPT **Incoterms 2010** (unversichert).  
 Regarding payment terms and warranty see [Terms and Conditions](#).  
**Delivery time:** normally 3 to 4 weeks - depending on quantity ordered and on our work load.

Customer is responsible for observing all applicable export laws in regard to filter application and location of end user



**Wainwright Instruments GmbH**  
[www.wainwright-filters.com](http://www.wainwright-filters.com)

Tel: +49 8152 918230  
 Fax: +49 8152 918255  
[info@wainwright-filters.com](mailto:info@wainwright-filters.com)