

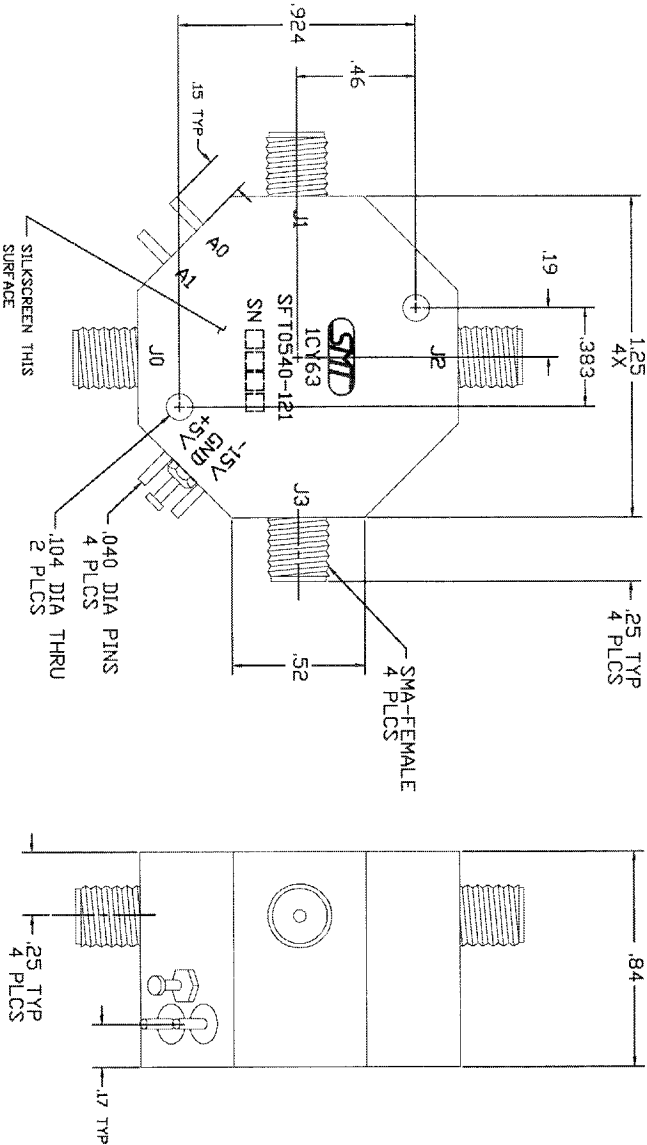
REVISONS			
REV.	DESCRIPTION	DATE	APPROVED
NC	INITIAL RELEASE		

SPECIFICATIONS:

FREQUENCY RANGE: 0.5 TO 4.0 GHz
VSWR: 2.01 MAX
INSERTION LOSS: 1.9 dB MAX
ISOLATION: 65 dB MIN
OPERATING TEMP: -55° TO +100° C
STORAGE TEMP: -65° TO +125°C
SWITCHING SPEED: 60 nSEC MAX
DC POWER: +5V @ 100 mA MAX
-15V @ 75 mA MAX

TRUTH TABLE:

LOW LOSS PORT	TTL INPUT LEVEL	
	A0	A1
J1	0	0
J2	1	0
J3	0	1



QTY		FSCM	PART ID	MATERIAL SPECIFICATION		
RECD NO.		IDENTIFYING NO.				
PARTS LIST						
FRACTIONS DECIMALS ANGLES XX± .02 ± XXX± .00			APPROVALS			
MATERIAL			DRAWN	DATE		
FINISH			CHECKED			
			ISSUED			
SIZE			FSCM NO.	DWG. NO.	REV.	
B			1C163	605-0425-001		
SCALE			SHEET			
SIERRA MICROWAVE TECHNOLOGY						
OUTLINE FOR SFT0540-121						
604-0059-001			SFT0540-121			
NEXT ASSY			USED ON			
APPLICATION						