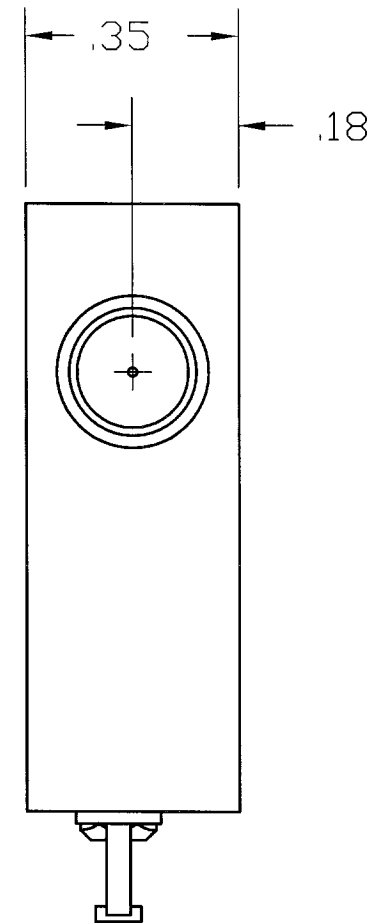
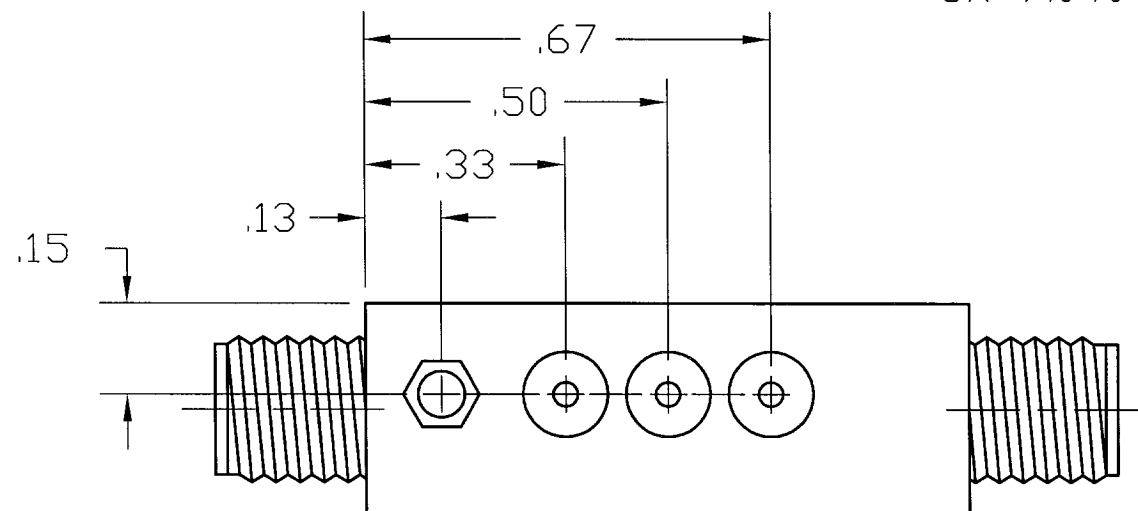



REVISIONS			
REV.	DESCRIPTION	DATE	RELEASED BY
NC	INITIAL RELEASE	4-16-96	BM
A	REV PER ECN: 6822, 9830	6-09-05	R.TS



FREQUENCY:	0.5 TO 4.0 GHz
VSWR:	2.0:1 MAX
J1 - ON ONLY	
J2 - ON OR OFF	
INSERTION LOSS:	1.5 dB MAX
ISOLATION:	65 dB MIN
SWITCHING SPEED:	25 nSEC MAX
(50% TTL to 10/90% RF)	
TEMPERATURE:	
OPERATING:	-55° TO +100°C
STORAGE	-65° TO +125°C
POWER SUPPLY:	+5V @ 50 mA MAX
	-15V @ 75 mA MAX
CONTROL AT C1:	TTL LOW - INSERTION LOSS
	TTL HIGH - ISOLATION



ITEM	QTY REQ'D	FSCM NO.	PART OR IDENTIFICATION NO.	NOMENCLATURE OR DESCRIPTION			MATERIAL SPECIFICATION		
PARTS LIST									
<div>UNLESS OTHERWISE SPECIFIED DIMENSIONS ARE IN INCHES TOLERANCES ARE: FRACTIONS DECIMALS ANGLES ± .XX±.02 ± .XXX±.010</div>				CONTRACT NO.		<div> SIERRA MICROWAVE TECHNOLOGY</div>			
				APPROVALS	DATE				
MATERIAL:				DRAWN:	D STALEY	TITLE: OUTLINE FOR SFS0540-101			
				CHECKED:					
FINISH:				DESIGN ENG.	B MESKOOB				
				MAT. & PROCESSES					
				Q.I.					
						SIZE B	FSCM NO. 1CY63	DWG NO. 605-0340-001	REV A
DO NOT SCALE DRAWING				BRDR SCALE				SHEET	OF