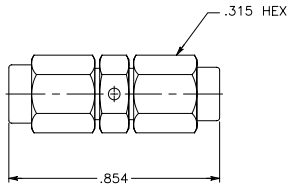




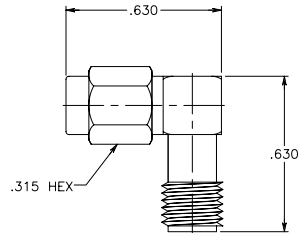
(SMA Plug to Plug)



**PART #**  
ADP 3000-301

Captive Contact

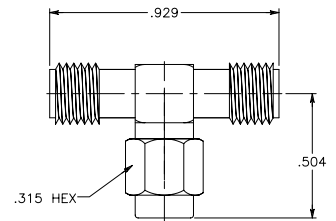
(SMA Right Angle Plug to Jack)



**PART #**  
ADP 3000-304

Captive Contact

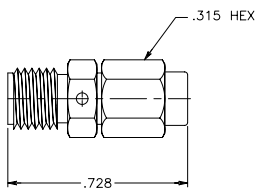
(SMA T-Adapter)  
1 Plug, 2 Jacks



**PART #**  
ADP 3000-307

Captive Contact

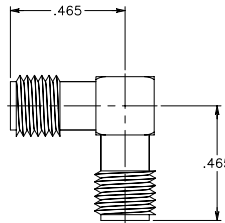
(SMA Plug to Jack)



**PART #**  
ADP 3000-302

Captive Contact

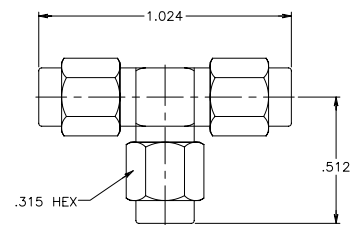
(SMA Right Angle Jack to Jack)



**PART #**  
ADP 3000-305

Captive Contact

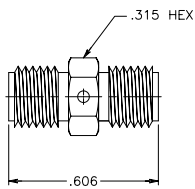
(SMA T-Adapter)  
3 Plugs



**PART #**  
ADP 3000-308

Captive Contact

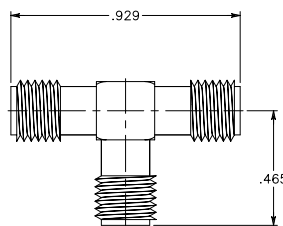
(SMA Jack to Jack)



**PART #**  
ADP 3000-303

Captive Contact

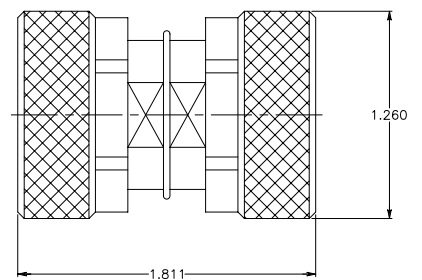
(SMA T-Adapter)  
3 Jacks



**PART #**  
ADP 3000-306

Captive Contact

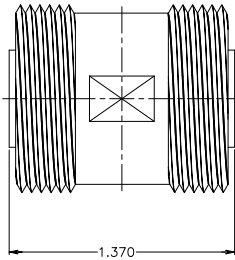
(7/16 Din Plug - 7/16 Din Plug)



**PART #**  
ADP 3000-309

Captive Contact

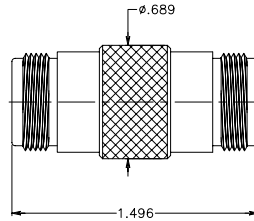
(7/16 Din Jack - 7/16 Din Jack)



**PART #**  
ADP 3000-310

Captive Contact

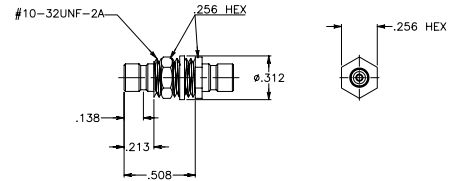
(N Jack to Jack)



**PART #**  
ADP 3000-313

Captive Contact

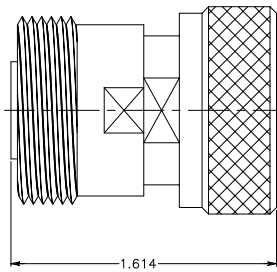
(SMB Jack to Bulkhead Jack)



**PART #**  
ADP 3000-316

Captive Contact

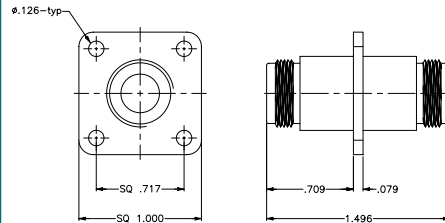
(7/16 Din Plug - 7/16 Din Jack)



**PART #**  
ADP 3000-311

Captive Contact

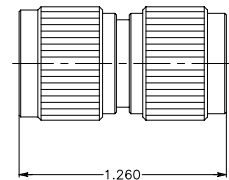
(N Panel Adapter Jack to Jack)



**PART #**  
ADP 3000-314

Captive Contact

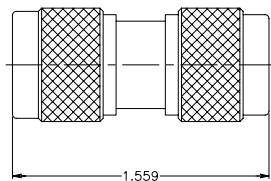
(TNC Plug to Plug)



**PART #**  
ADP 3000-317

Captive Contact

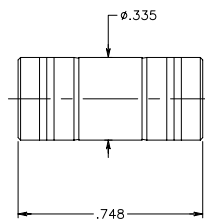
(N Plug to Plug)



**PART #**  
ADP 3000-312

Captive Contact

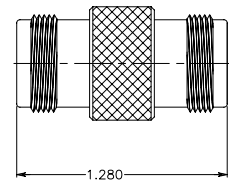
(SMB Plug to Plug)



**PART #**  
ADP 3000-315

Captive Contact

(TNC Jack to Jack)

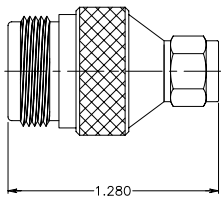


**PART #**  
ADP 3000-318

Captive Contact



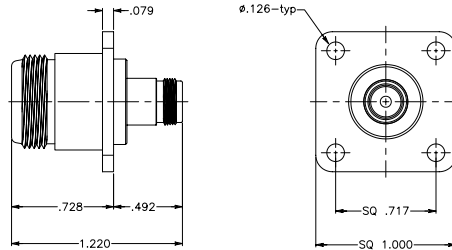
(SMA Plug to N Jack)



**PART #**  
ADP 3000-319

Captive Contact

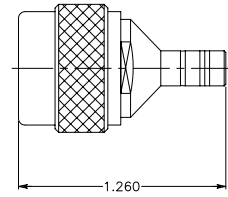
(SMA Jack to N Panel Jack)



**PART #**  
ADP 3000-322

Captive Contact

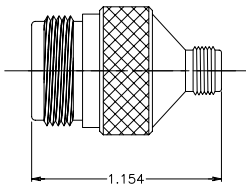
(SMB Plug to N Plug)



**PART #**  
ADP 3000-325

Captive Contact

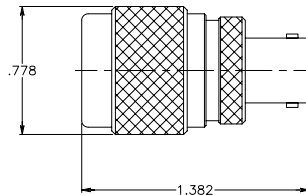
(SMA Jack to N Jack)



**PART #**  
ADP 3000-320

Captive Contact

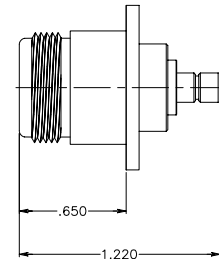
(BNC Jack to N Plug)



**PART #**  
ADP 3000-323

Captive Contact

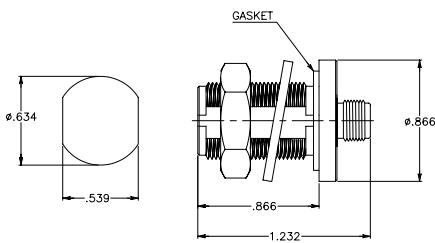
(SMB Jack to N Panel Jack)



**PART #**  
ADP 3000-326

Captive Contact

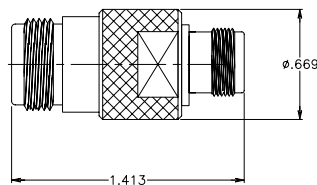
(SMA Jack to N Bulkhead Jack)



**PART #**  
ADP 3000-321

Captive Contact

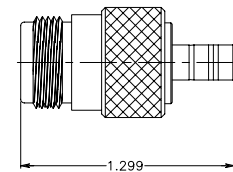
(TNC Jack to N Jack)



**PART #**  
ADP 3000-324

Captive Contact

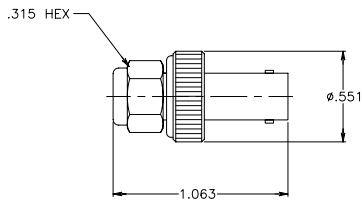
(SMB Plug to N Jack)



**PART #**  
ADP 3000-327

Captive Contact

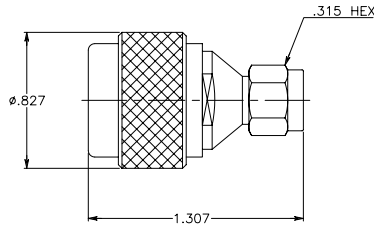
(SMA Plug to BNC Jack)



**PART #**  
ADP 3000-328

Captive Contact

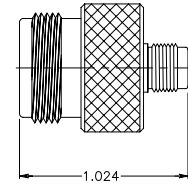
(SMA Plug to N Plug)



**PART #**  
ADP 3000-331

Captive Contact

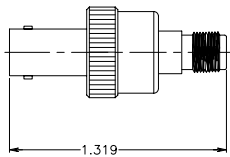
(SMA Jack to TNC Jack)



**PART #**  
ADP 3000-334

Captive Contact

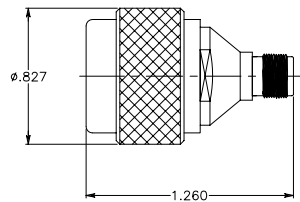
(SMA Jack to BNC Jack)



**PART #**  
ADP 3000-329

Captive Contact

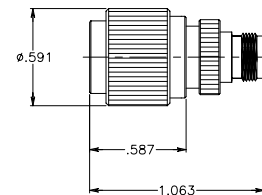
(SMA Jack to N Plug)



**PART #**  
ADP 3000-332

Captive Contact

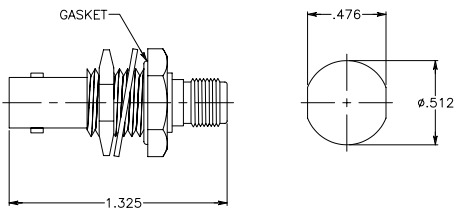
(SMA Jack to TNC Plug)



**PART #**  
ADP 3000-335

Captive Contact

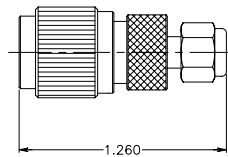
(Bulkhead SMA Jack to BNC Jack)



**PART #**  
ADP 3000-330

Captive Contact

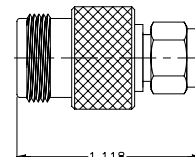
(SMA Plug to TNC Plug)



**PART #**  
ADP 3000-333

Captive Contact

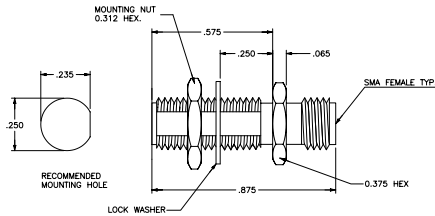
(SMA Plug to TNC Jack)



**PART #**  
ADP 3000-336

Captive Contact

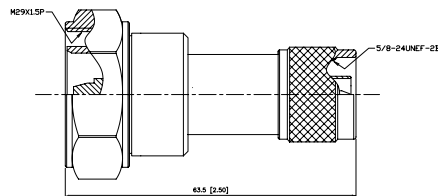
**(Female to Female Bulkhead Feed Through)**



**PART #**  
ADP 3000-337

Captive Contact

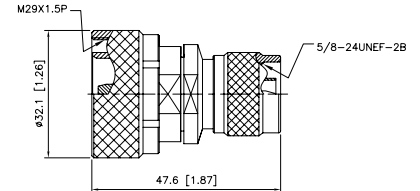
**(DIN 7/16 Plug to N Plug 50 Ohm)**



**PART #**  
ADP 3000-340

Captive Contact

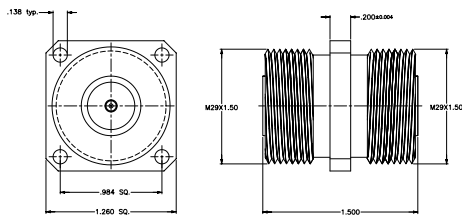
**(DIN 7/16 Plug to N Plug 50 Ohm)**



**PART #**  
ADP 3000-343

Captive Contact

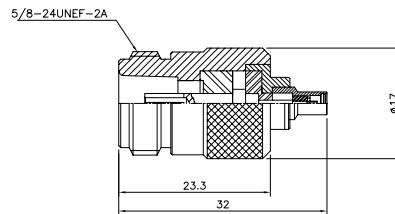
**(Adapter 7/16 Jack to Jack Flange Mount)**



**PART #**  
ADP 3000-338

Captive Contact

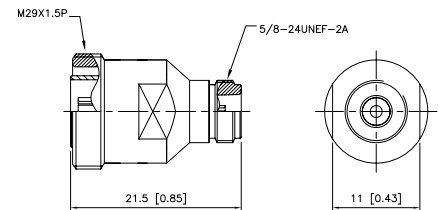
**(N-Jack to MMCX Jack)**



**PART #**  
ADP 3000-341

Captive Contact

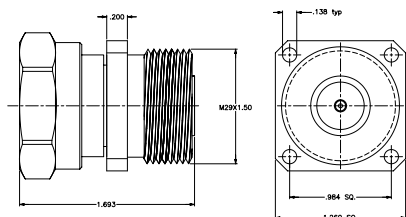
**(DIN 7/16 Jack to N Jack 50 Ohm)**



**PART #**  
ADP 3000-344

Captive Contact

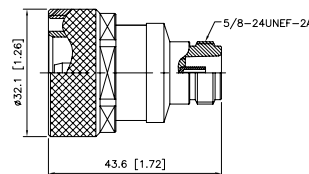
**(Adapter 7/16 Plug to Jack Flange Mount)**



**PART #**  
ADP 3000-339

Captive Contact

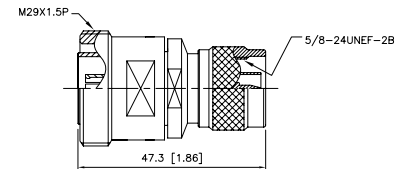
**(DIN 7/16 Plug to N Jack 50 Ohm)**



**PART #**  
ADP 3000-342

Captive Contact

**(DIN 7/16 Jack to N Plug 50 Ohm)**



**PART #**  
ADP 3000-345

Captive Contact

