

- 1.0 PERFORMANCE:  
 1.1 FREQUENCY RANGE DC-18 GHz  
 1.2 VSWR < 1.15  
 1.3 SYSTEM IMPEDANCE 50 OHMS  
 1.4 DWV: 1000 Vrms @ 60 Hz (SEA LEVEL)  
 1.5 VOLTAGE RATING: 335 Vrms (SEA LEVEL)  
 1.6 TEMP RANGE: -65 / +165 °C

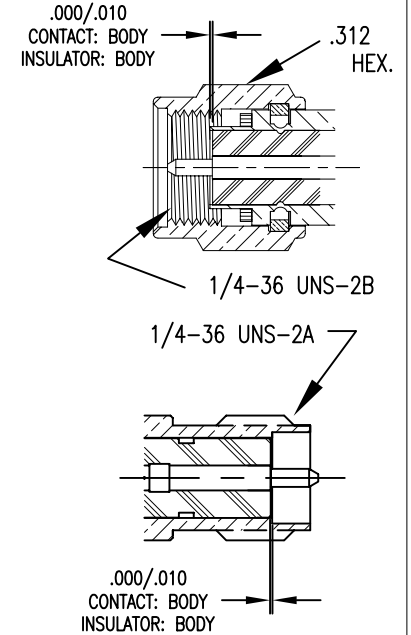
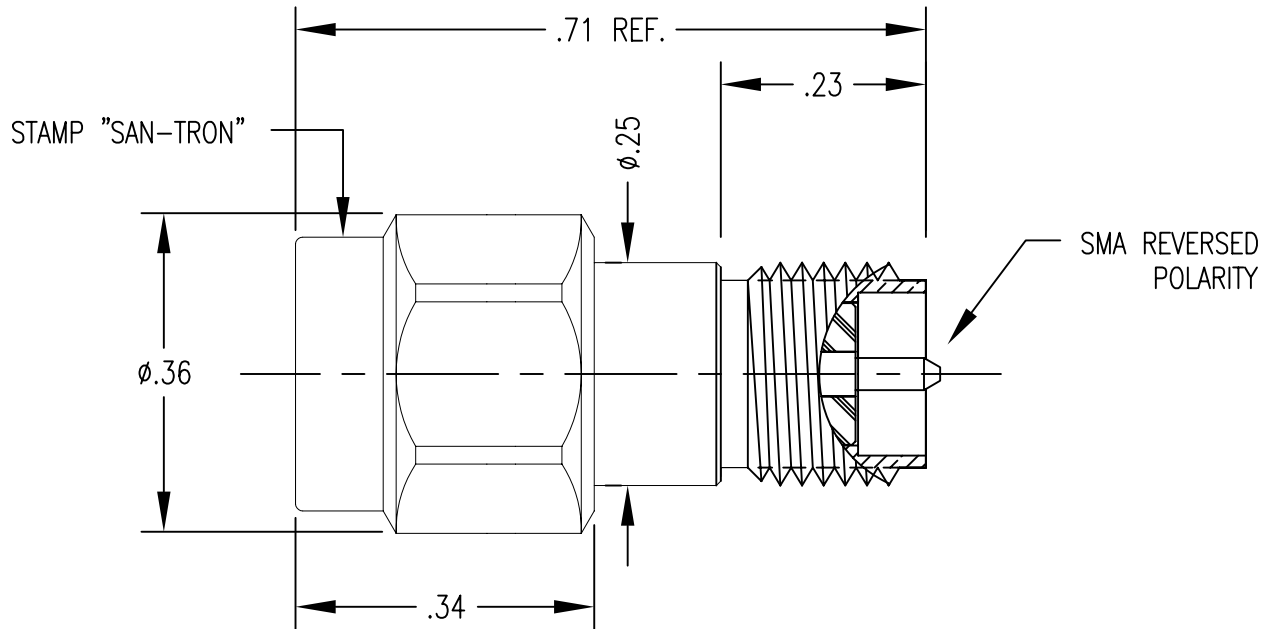
- 2.0 MATERIALS  
 2.1 CONTACT: BRASS  
 2.3 LOCKING RING: BERYLLIUM COPPPER  
 2.4 OTHER METAL PARTS: BRASS  
 2.5 INSULATOR: TEFLON  
 2.6 GASKET: SILICONE RUBBER OR VITON

- 4.0 MECHANICAL  
 4.1 INTERFACES PER MIL-STD-348  
 4.2 COUPLING PROOF TORQUE 15 INCH\*LBS  
 4.3 COUPLING NUT RETENTION 60 LBS AXIAL  
 4.4 CONTACT RETENTION: 6 LBS MIN.  
 4.5 DURABILITY: 100 CYCLES

- 3.0 FINISHES  
 3.1 CONTACT: SEE TABLE  
 3.2 BODY & COUPLING NUT: SEE TABLE

DWG NO.	OL-1210-04-1		REV.	A
PLATING VARIATIONS				
PART NUMBER	BODY	CONTACT		
1210-04-NH	NICKEL	GOLD/Ni		
1210-04-FH	Au FUSION	GOLD/Ni		

PLATING PER SAN-TRON SPEC. 7.3.1-8



DO NOT SCALE DRAWING

Rev.	A	ORIGINAL	NEW	11/1/04		
Revisions			Disp.	Date	Dwn.	Appd.
Ref.:			REMOVE ALL BURRS AND SHARP EDGES .005 MAX.	INTERPRET PER ASME Y14.5M-1994		

THIS DRAWING CONTAINS CONFIDENTIAL INFORMATION PROPRIETARY TO SAN-TRON INC. IT MUST NOT BE REPRODUCED OR DISCLOSED TO OTHERS OR USED IN ANY OTHER WAY, IN WHOLE OR PART EXCEPT AS AUTHORIZED IN WRITING BY SAN-TRON INCORPORATED.

UNLESS OTHERWISE SPECIFIED:  
 ALL DIMENSIONS ARE IN INCHES.  
 ALL DIMENSIONS ARE AFTER PLATING.  
 .XXX = ±.005 ALL MACHINED SURFACES 63/ MAX.  
 .XX = ±.01 ANG. ±1/2' FRACTIONAL = ±1/64  
 .004 MAX. TIR.      ⊥ AXIS .001

DWN    LAP    11/1/04  
 CHKD    SJS    11/2/04  
 APPR    FSH    11/1/04

THIRD ANGLE PROJECTION

**SAN-TRON, INC.**  
 4 NEWBURYPORT TPK. IPSWICH MA USA 01938  
 TEL: 978 - 356 -1585    FAX: 978 - 356 -1573  
 WWW.SANTRON.COM    E MAIL: SANTRON@SANTRON.COM

TITLE: ADAPTER, STRAIGHT RPSMA (PIN) TO SMA (M)

MATERIAL: SEE NOTES      FINISH: SEE NOTES

CAGE CODE: 50896      DWG NO. OL-1210-04-1      REV. A

SCALE: X:X