

# FLAT PANEL ANTENNA

## FPA13-18R/1523



### ELECTRICAL

FREQUENCY:	1.60 - 1.95 GHz
GAIN:	13 dBiC
POLARISATION:	Right Hand Circular
BEAMWIDTH:	35° (Az) x 35° (El)
CROSS POLAR:	1.7 dB Typ.
VSWR:	2:1 Max. 1.5:1 Typ.
POWER RATING:	20 W
FRONT TO BACK:	35 dB

### MECHANICAL

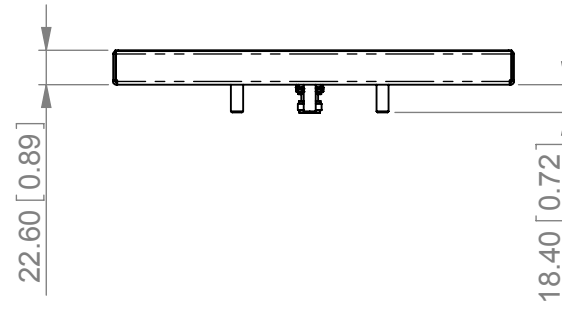
STANDARD FINISH:	Desert Tan
MASS:	0.75 kg / 1.65 lbs
TEMPERATURE:	-40° to +60°C
WIND LOADING:	11.39 kg / 25.05 lbs @ 100 mph

### MOUNTING OPTIONS

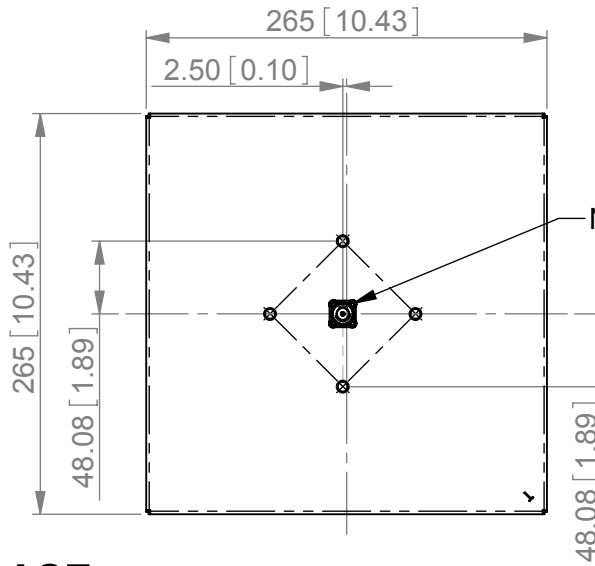
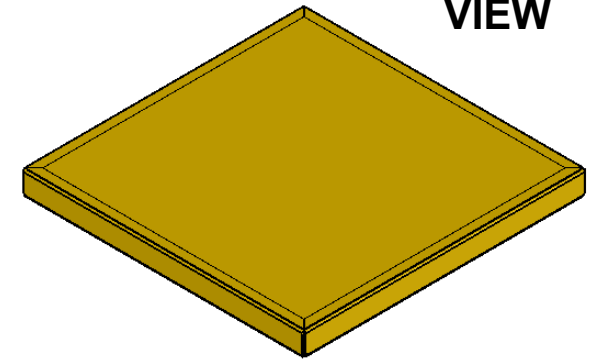
KITS AVAILABLE: MK4/B

See Separate Data Sheets

**SIDE VIEW**



**ISOMETRIC VIEW**



N(F) CONNECTOR

**BASE VIEW**

GA: 1523-1 Issued: 070508  
 DIMENSIONS: mm [inches]

FPA13-18R/1523

European Antennas Ltd. has a policy of continuous development and therefore stress that the data contained on this sheet should be used for guidance only.

European Antennas Ltd. is part of the Cobham Antennas Division



Certificate No 9268

European Antennas Ltd  
 Lambda House, Cheveley  
 Newmarket, Suffolk, CB8 9RG, UK  
 Tel: +44 (0)1638 731888  
 sales@european-antennas.co.uk  
[www.european-antennas.co.uk](http://www.european-antennas.co.uk)