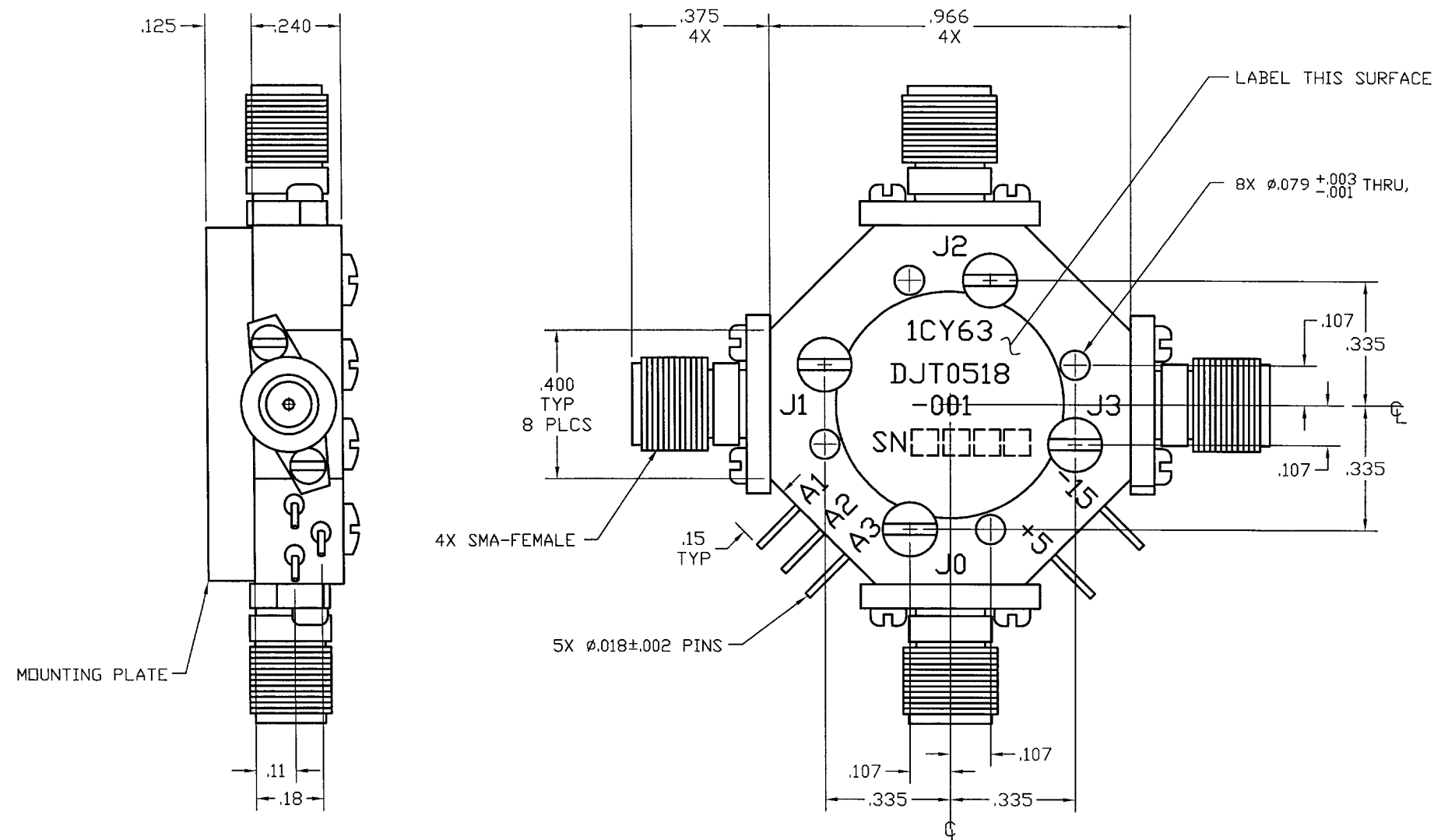


**COMPUTER GENERATED DRAWING
MANUAL CHANGES NOT AUTHORIZED**


REVISIONS

REV.	DESCRIPTION	DATE	RELEASED BY
NC	INITIAL RELEASE	4-23-90	BM
A	6822, 9830	5-09-05	R. FS



SPECIFICATIONS:

FREQUENCY:	0.5 - 18.0 GHz	
INSERTION LOSS:		
	0.5-4.0 GHz	1.4 dB MAX
	4.0-12.0 GHz	2.0 dB MAX
	12.0-18.0 GHz	2.5 dB MAX
VSWR:	2.0:1 MAX	
ISOLATION:		
	0.5-12.0 GHz	60 dB MIN
	12.0-18.0 GHz	55 dB MIN
SWITCHING SPEED:	75nSEC	
CONTROL:		
	TTL LOW - INSERTION LOSS	
	TTL HI - ISOLATION	
TEMPERATURE:		
OPERATING:	-54° TO +100° C	
STORAGE:	-54° TO +100° C	
BIAS CONDITIONS:		
	+5V @ 100 mA MAX	
	-15V @ 50 mA MAX	

ITEM	QTY REQ'D	FSCM NO.	PART OR IDENTIFICATION NO.	NOMENCLATURE OR DESCRIPTION			MATERIAL SPECIFICATION						
PARTS LIST													
UNLESS OTHERWISE SPECIFIED DIMENSIONS ARE IN INCHES TOLERANCES ARE: FRACTIONS DECIMALS ANGLES ± .XX± .02 ± .XXX± .010			CONTRACT NO.		<div> SIERRA MICROWAVE TECHNOLOGY</div> TITLE: OUTLINE FOR DJT0518-001								
			APPROVALS						DATE				
MATERIAL:			DRAWN: J JAMES						11-17-95				
			CHECKED:										
FINISH:			DESIGN ENG. B MESKDOB						11-17-95				
			MAT. & PROCESSES										
			Q.A.				SIZE		FSCM NO.	DWG NO.	REV		
							B		1CY63		605-0279-001		A
DO NOT SCALE DRAWING							BRDR SCALE					SHEET OF	