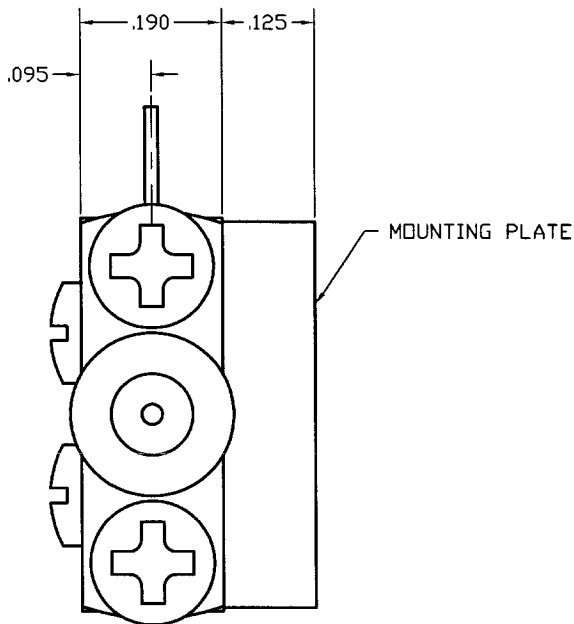
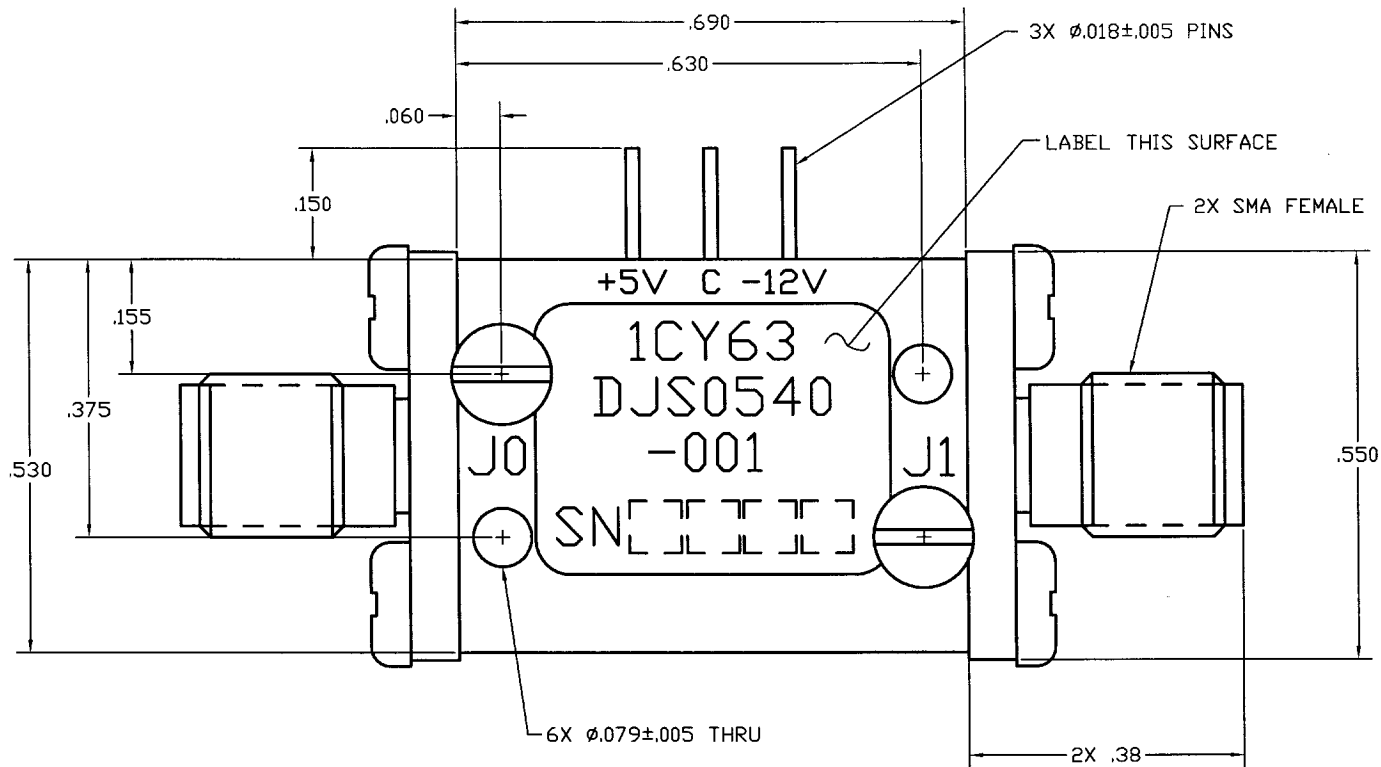


COMPUTER GENERATED DRAWING  
MANUAL CHANGES NOT AUTHORIZED


REVISIONS

REV.	DESCRIPTION	DATE	RELEASED BY
NC	INITIAL RELEASE	5-05-94	KN
A	REV PER ECN: 6784	4-12-99	JLA
B	REV PER ECN: 6822, 9830	8-18-05	HL



SPECIFICATIONS:

FREQUENCY RANGE:	0.5 - 4.0 GHz
INSERTION LOSS:	1.1 dB MAX
VSWR(50 OHM):	1.80:1 MAX
ISOLATION:	60 dB MIN
SWITCHING SPEED:	25nSEC
TEMPERATURE	
OPERATING	-55°C TO +100°C
STORAGE	-55°C TO +100°C
CONTROL:	TTL LOW: INSERTION LOSS TTL HIGH: ISOLATION
BIAS CONDITIONS:	+5V±0.5V @ 50 mA MAX. -12V @ 50 mA MAX.

ITEM	QTY REQ'D	FSCM NO.	PART OR IDENTIFICATION NO.	NOMENCLATURE OR DESCRIPTION	MATERIAL SPECIFICATION
PARTS LIST					
UNLESS OTHERWISE SPECIFIED DIMENSIONS ARE IN INCHES TOLERANCES ARE: FRACTIONS DECIMALS ANGLES ± .XX± ± ± .XXX± .005				CONTRACT NO.	 SIERRA MICROWAVE TECHNOLOGY  TITLE:  OUTLINE FOR DJS0540-001  SIZE B FSCM NO. 1CY63 DWG NO. 605-0173-001 REV B
MATERIAL:				APPROVALS	
FINISH:				DATE	
DO NOT SCALE DRAWING				BRDR SCALE	
APPLICATION				SHEET	

603-0050-001	DJS0540-001
LIST OF MAT'L	USED ON