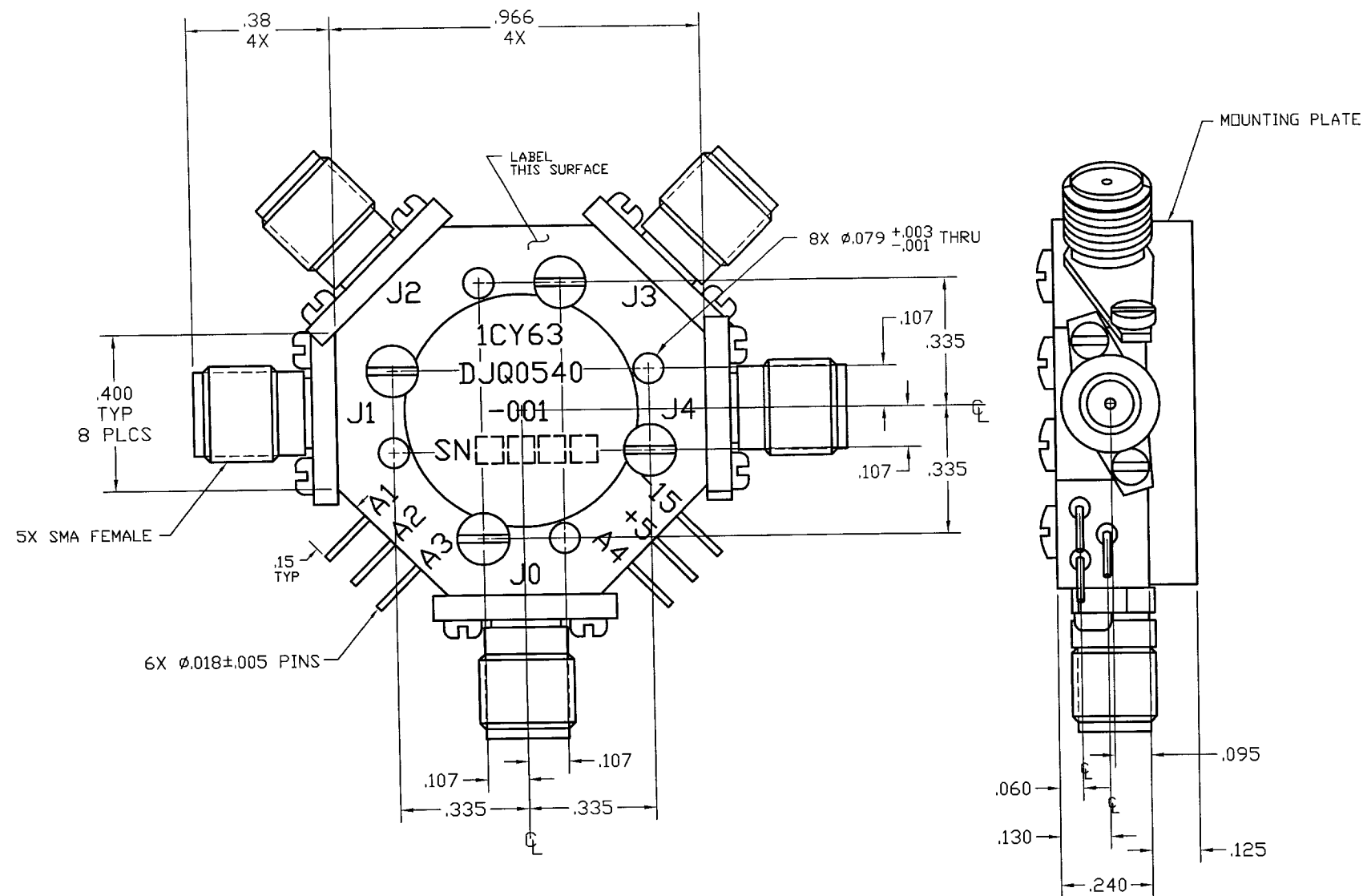


COMPUTER GENERATED DRAWING
MANUAL CHANGES NOT AUTHORIZED


REVISIONS

REV.	DESCRIPTION	DATE	RELEASED BY
NC	INITIAL RELEASE	10-16-95	BM
A	REV PER ECN: 6822, 9830	0570-05	R.TS



SPECIFICATIONS:

FREQUENCY:	0.5 - 4.0 GHz
INSERTION LOSS:	1.5 dB MAX
VSWR:	2.0:1 MAX
ISOLATION:	60 dB MIN
SWITCHING SPEED:	75nSEC
CONTROL:	
	TTL LOW - INSERTION LOSS
	TTL HI - ISOLATION
TEMPERATURE:	
OPERATING:	-54° TO +100° C
STORAGE:	-54° TO +100° C
BIAS CONDITIONS:	+5V @ 100 mA MAX
	-15V @ 50 mA MAX

ITEM		QTY REQ'D	FSCM NO.	PART OR IDENTIFICATION NO.	NOMENCLATURE OR DESCRIPTION		MATERIAL SPECIFICATION			
PARTS LIST										
UNLESS OTHERWISE SPECIFIED DIMENSIONS ARE IN INCHES TOLERANCES ARE: FRACTIONS DECIMALS ANGLES ± .XX± .02 ± .XXX± .010				CONTRACT NO.		<div> SIERRA MICROWAVE TECHNOLOGY</div> TITLE: OUTLINE FOR DJQ0540-001				
				APPROVALS						DATE
				DRAWN: J JAMES						10-16-95
				CHECKED:						
				DESIGN ENG. B MESKOOB						10-16-95
MATERIAL:				MAT. & PROCESSES						
FINISH:				Q.A.						
603-0004-001		DJQ0540-001				SIZE B	FSCM NO. 1CY63	DWG NO. 605-0275-001	REV A	
LIST OF MAT'L		USED ON								
APPLICATION				DO NOT SCALE DRAWING		BRDR SCALE		SHEET OF		