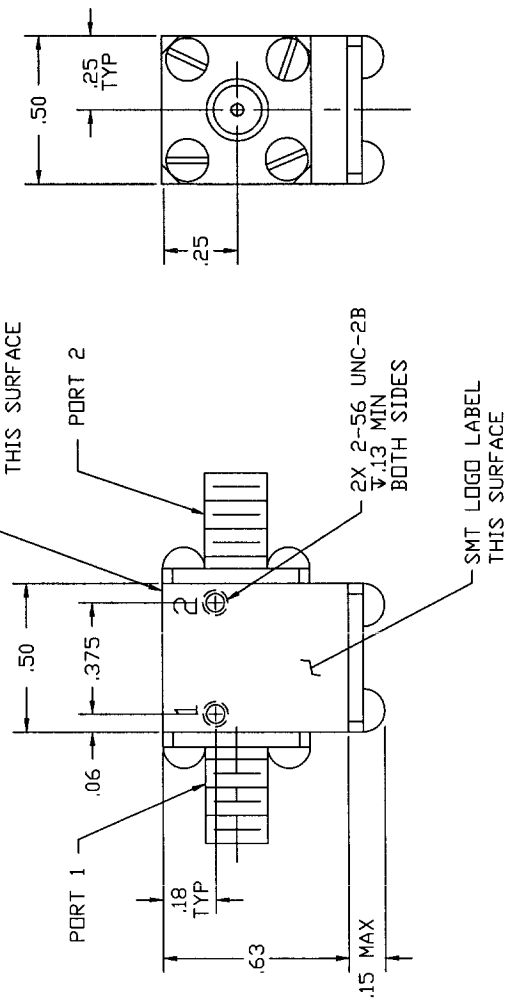


COMPUTER GENERATED DRAWING MANUAL CHANGES NOT AUTHORIZED		REVISIONS	
REV.	DESCRIPTION	DATE	RELEASED BY
NC	INITIAL RELEASE	10-14-86	T.R.
A	REV PER ECN: 5515	3-23-99	M.T.
B	REV PER ECN: 7395	9-8-00	M.T.
C	REV PER ECN: 8306		

LABEL WITH MODEL NO.
AND SERIAL NO.
THIS SURFACE



SPECIFICATIONS:

FREQUENCY:----- 18.0-26.5 GHz
 ISOLATION:----- 18 dB MIN
 INSERTION LOSS:----- 0.6 dB MAX
 VSWR:----- 1.30:1 MAX
 TEMPERATURE:
 OPERATING----- -54° TO +85°C
 STORAGE----- -54° TO +85°C

DASH NO.	PORT 1	PORT 2	PORT 3
NONE	SMA FEMALE	SMA FEMALE	TERMINATED
-1	SMA MALE	SMA FEMALE	TERMINATED
-2	SMA FEMALE	SMA MALE	TERMINATED
-3	SMA MALE	SMA MALE	TERMINATED

PART DRAWN IS SMI1826 - NO DASH NUMBER.

FORM	QTY	FSCN	PART OR IDENTIFICATION NO.	QUANTITY OF DESCRIPTION	MATERIAL SPECIFICATION
PARTS LIST					
SIERRA MICROWAVE TECHNOLOGY 204-0349-001 SMI1826-3 204-0348-001 SMI1826-1&2 204-0033-001 SMI1826 LIST OF MAT. USED ON		CONTRACT NO. APPROVALS: J. DARJES 10-13-86 CHECKED: J. RODRIGUEZ 10-14-86 DATE: 10-13-86 BY: J. RODRIGUEZ USE & PREPARE:			
APPLICATION		TITLE: OUTLINE FOR SMI1826-X			
DO NOT SCALE DRAWING		SIZE B FSCN NO. 1CY63 DWG NO. 205-0104-001 REV C			