

Surface Mount Low Pass Filter

RLP-290+

50Ω DC to 290 MHz

The Big Deal

- Low Insertion Loss (1.2 dB typical)
- Good VSWR (1.4:1 typical)
- High Rejection
- Very small size (0.35" x 0.35" x 0.10")



CASE STYLE: GP731

Product Overview

The RLP-290+ is a Lowpass filter fabricated using SMT technology. Covering DC to 290 MHz, this model offers low passband insertion loss of 1.2 dB typical, good matching within the passband and high rejection. In addition it has repeatable performance across production lots and consistent performance across temperature.

Key Features

Feature	Advantages
Good VSWR, 1.4:1 typical in passband	This provides well matched input and output ports.
Sharp roll-off shape factor, 1.2	Sharp shape factor helps in adjacent channel rejection and hence increased selectivity.
More than 40 dB rejection up to 950 MHz	This enables the filter to attenuate spurious signals and reject harmonics over a broad frequency band.
Small size, 0.35" x 0.35" x 0.10"	The surface mount package enables the RLP-290+ to be used in compact designs.
Shielded case	Reduced interference with and from the surrounding components.



For detailed performance specs
& shopping online see web site

P.O. Box 350166, Brooklyn, New York 11235-0003 (718) 934-4500 Fax (718) 332-4661 The Design Engineers Search Engine  Provides ACTUAL Data Instantly at minicircuits.com

IF/RF MICROWAVE COMPONENTS

Notes: 1. Performance and quality attributes and conditions not expressly stated in this specification sheet are intended to be excluded and do not form a part of this specification sheet. 2. Electrical specifications and performance data contained herein are based on Mini-Circuit's applicable established test performance criteria and measurement instructions. 3. The parts covered by this specification sheet are subject to Mini-Circuits standard limited warranty and terms and conditions (collectively, "Standard Terms"); Purchasers of this part are entitled to the rights and benefits contained therein. For a full statement of the Standard Terms and the exclusive rights and remedies thereunder, please visit Mini-Circuits' website at www.minicircuits.com/MCLStore/terms.jsp.

Surface Mount Low Pass Filter

50Ω DC to 290 MHz

RLP-290+



CASE STYLE: GP731
PRICE: \$7.95 ea. QTY (10-24)

Features

- High rejection
- Sharp insertion loss roll off
- Good VSWR, 1.4:1 typical in passband
- Aqueous washable

Applications

- TV Broad casting
- Wireless communications
- VHF/UHF receivers / transmitters
- Military

Electrical Specifications at 25°C

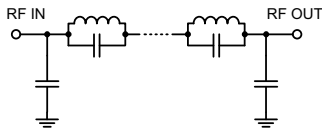
Parameter	F#	Frequency (MHz)	Min.	Typ.	Max.	Unit	
Pass Band	Insertion Loss	DC-F1	DC - 290	—	1.2	1.8	dB
	Freq. Cut-Off	F2	310	—	3.0	—	dB
	VSWR	DC-F1	DC - 290	—	1.4	1.9	:1
Stop Band	Rejection Loss	F3-F4	350 - 1600	20	26	—	dB
	VSWR	F3-F4	350 - 1600	—	12	—	:1

Maximum Ratings

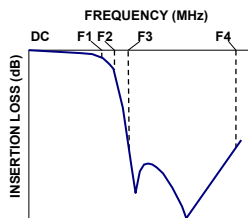
Operating Temperature	-40°C to 85°C
Storage Temperature	-55°C to 100°C
RF Power Input	0.5W max.

Permanent damage may occur if any of these limits are exceeded.

Functional Schematic



Typical Frequency Response

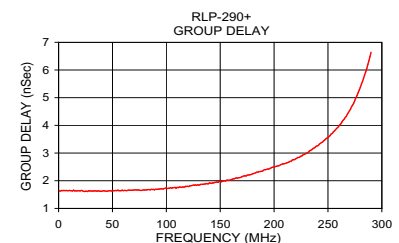
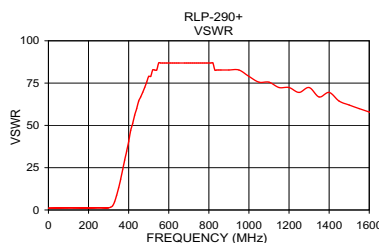
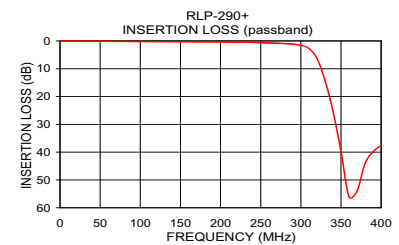


Typical Performance Data at 25°C

Frequency (MHz)	Insertion Loss (dB)	VSWR (:1)	Frequency (MHz)	Group Delay (nsec)
0.5	0.03	1.01	0.5	1.64
20.0	0.06	1.07	100.0	1.74
44.0	0.11	1.17	130.0	1.84
102.0	0.24	1.31	159.0	2.02
224.0	0.47	1.26	184.0	2.31
280.0	0.95	1.25	215.0	2.70
285.0	1.03	1.22	225.0	2.89
290.0	1.15	1.23	231.0	3.01
310.0	2.74	1.60	245.0	3.40
320.0	6.12	2.44	260.0	3.97
330.0	13.55	4.83	265.0	4.22
350.0	37.82	13.09	270.0	4.53
450.0	36.93	64.35	275.0	4.91
500.0	41.92	78.97	277.0	5.08
540.0	50.40	82.73	278.0	5.18
600.0	55.13	86.86	282.0	5.58
950.0	48.42	82.73	285.0	5.93
1000.0	43.62	78.97	286.0	6.06
1400.0	29.35	69.49	288.0	6.33
1600.0	26.12	57.91	290.0	6.64

+ RoHS compliant in accordance with EU Directive (2002/95/EC)

The +Suffix has been added in order to identify RoHS Compliance. See our web site for RoHS Compliance methodologies and qualifications.



Mini-Circuits®
ISO 9001 ISO 14001 AS 9100 CERTIFIED

P.O. Box 350166, Brooklyn, New York 11235-0003 (718) 934-4500 Fax (718) 332-4661 The Design Engineers Search Engine Provides ACTUAL Data Instantly at minicircuits.com

IFIRF MICROWAVE COMPONENTS

For detailed performance specs & shipping online see web site

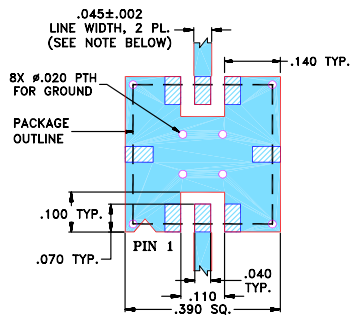
Notes: 1. Performance and quality attributes and conditions not expressly stated in this specification sheet are intended to be excluded and do not form a part of this specification sheet. 2. Electrical specifications and performance data contained herein are based on Mini-Circuit's applicable established test performance criteria and measurement instructions. 3. The parts covered by this specification sheet are subject to Mini-Circuits standard limited warranty and terms and conditions (collectively, "Standard Terms"); Purchasers of this part are entitled to the rights and benefits contained therein. For a full statement of the Standard Terms and the exclusive rights and remedies thereunder, please visit Mini-Circuits' website at www.minicircuits.com/MCLStore/terms.jsp.

REV. OR
M130748
RLP-290+
EDR-9914AUF1
RAV/URJ/NY
110728
Page 2 of 3

Pad Connections

INPUT	2
OUTPUT	6
GROUND	1,3,4,5,7,8

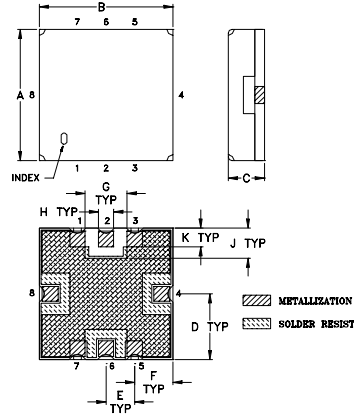
Demo Board MCL P/N: TB-332
Suggested PCB Layout (PL-176)



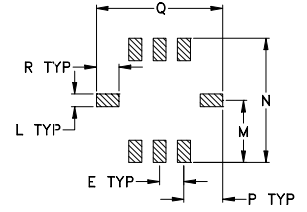
NOTES: 1. TRACE WIDTH IS SHOWN FOR FR4 WITH DIELECTRIC THICKNESS .025" ± .002"; COPPER: 1/2 OZ. EACH SIDE. FOR OTHER MATERIALS TRACE WIDTH MAY NEED TO BE MODIFIED.
 2. BOTTOM SIDE OF THE PCB IS CONTINUOUS GROUND PLANE.

- DENOTES PCB COPPER LAYOUT WITH SMOBC (SOLDER MASK OVER BARE COPPER)
- DENOTES COPPER LAND PATTERN FREE OF SOLDER MASK

Outline Drawing



PCB Land Pattern



Suggested Layout,
 Tolerance to be within ±.002

Outline Dimensions (inch / mm)

A	B	C	D	E	F	G	H	J
.350	.350	.100	.175	.075	.100	.110	.040	.080
8.89	8.89	2.54	4.45	1.91	2.54	2.79	1.02	2.03
K	L	M	N	P	Q	R	wt	
.050	.040	.195	.390	.120	.390	.070	grams	
1.27	1.02	4.95	9.91	3.05	9.91	1.78	0.25	