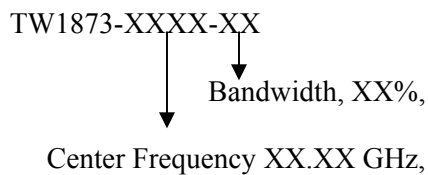


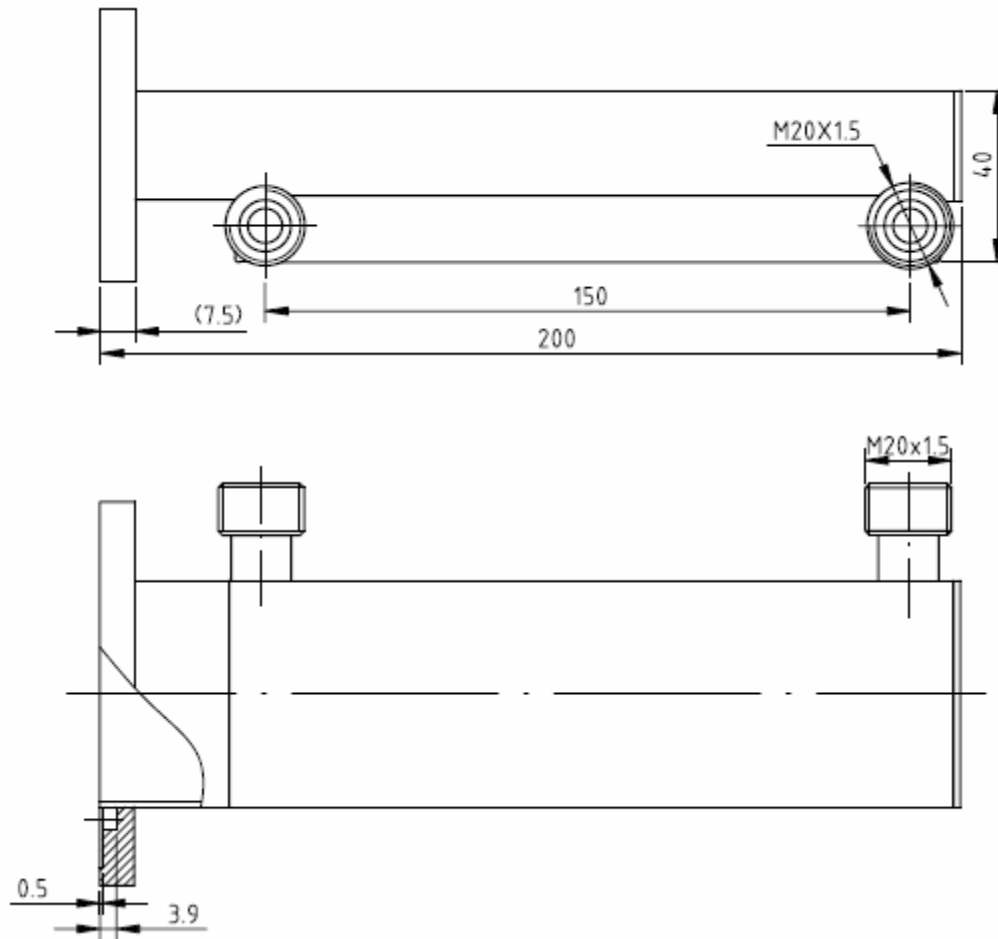
Key Features:

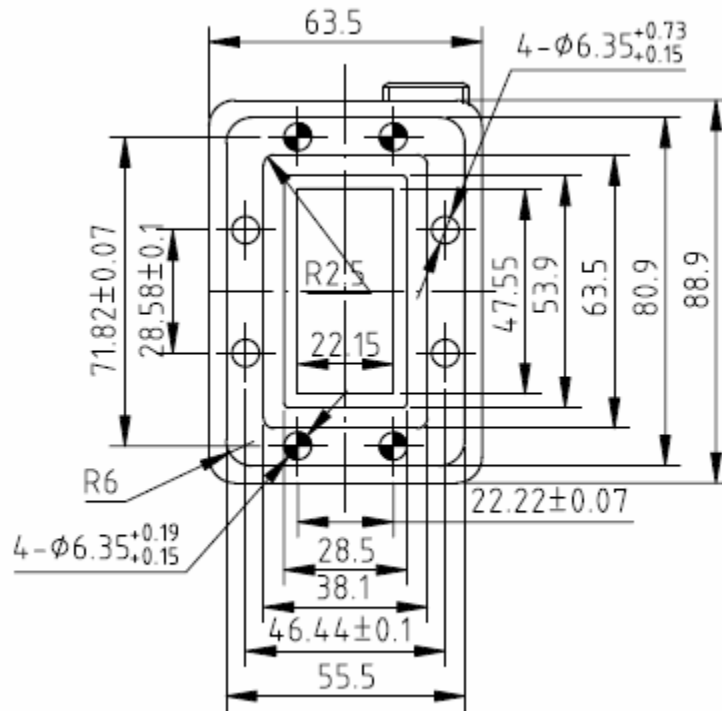
- Center frequency range: 3.95~5.85GHz, bandwidth up to 500MHz
- Low VSWR, high power
- Size: 88.9×63.5×200.mm
- WR187 Waveguide, Grooved flange for hermetical seal
- Cooling method: Water

Electrical Specifications

Part No.	Freq Range MHz	VSWR	CW Power, Watts	Pulse Power Watts	Temp. Range, °C
TW1873-0415-10	3.95-4.35	≤ 1.1:1	≥ 1000	50 kWatts	-40 ~ +70
TW1873-0430-09	4.10-4.50	≤ 1.1:1	≥ 1000	50 kWatts	-40 ~ +70
TW1873-0475-10	4.50-5.00	≤ 1.1:1	≥ 1000	50 kWatts	-40 ~ +70
TW1873-0565-07	5.45-5.85	≤ 1.1:1	≥ 1000	50 kWatts	-40 ~ +70

Ordering Information:**Mechanical Structure:**





Note: All units in millimeters