

**Key Features:**

- Frequency range: 1200~3000MHz, up to 400MHz bandwidth
- Drop-in configuration
- Small size, low cost
- Power handling >25 Watts CW, 100 Watt with pulse width 100mS and DC 25%
- Customer specify center frequency and bandwidth

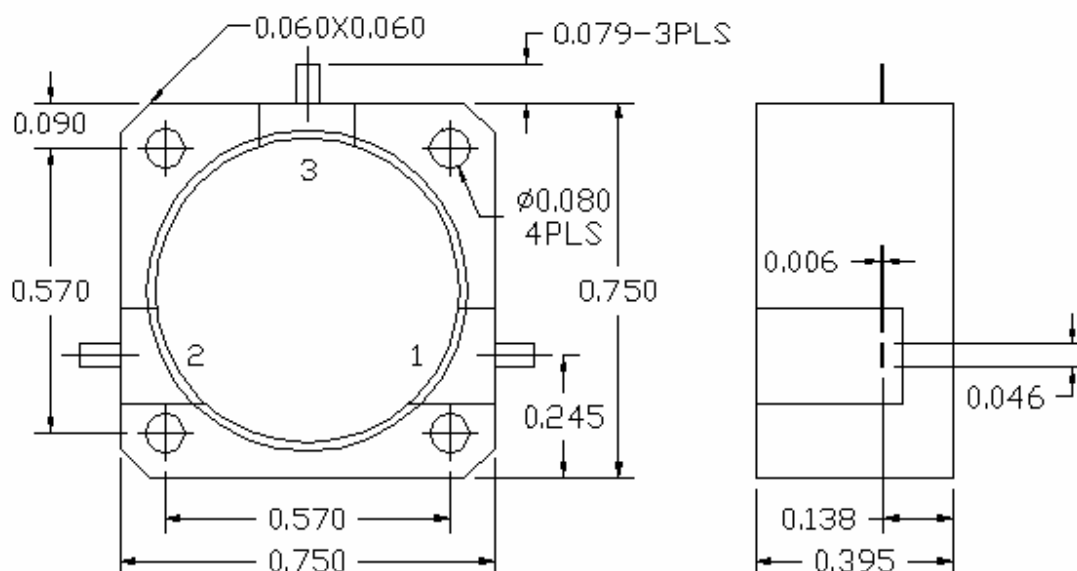


**Electrical Specifications**

Part No.	Freq Range GHz	Insertion Loss, dB	Reverse Isolation, dB	VSWR	Forward Power, CW W	Forward Power, Pulse, W	Temp. Range, °C
F1578-0130-15	1.2~1.4	0.40	18.0	1.25	25	100	-30 ~ +70
F1578-0194-24*	1.71~2.17	0.5 Max(1) 0.7 Max(2)	20(1) 17(2)	1.25(1) 1.35(2)	25	100	0 ~ +85
F1578-0225-13	2.1~2.4	0.40	18.0	1.25	25	100	-30 ~ +70
F1578-0238-00	2.32~2.44	0.4 Max	20	1.25	25	100	-25 ~ +50

\* (1) for sub-band 1.71~1.98GHz and (2) for 1.99~2.17GHz.

**Mechanical Structure:**



Note: All units in inches.