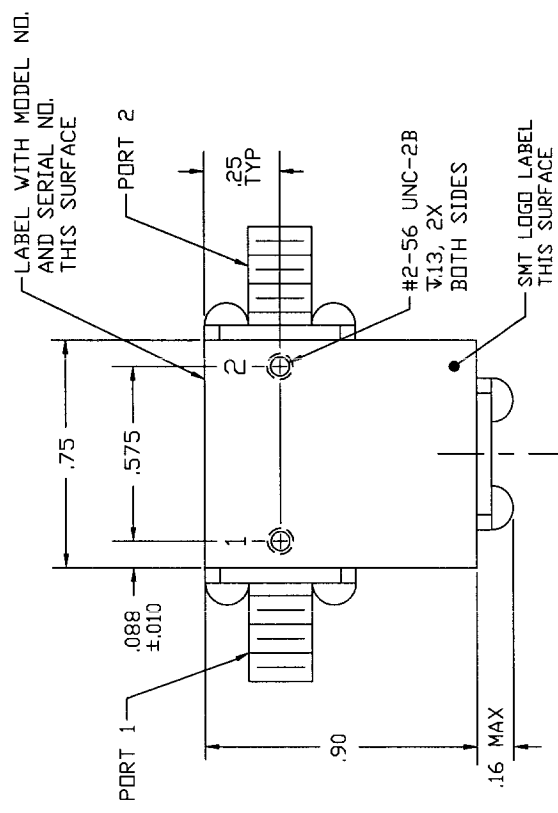
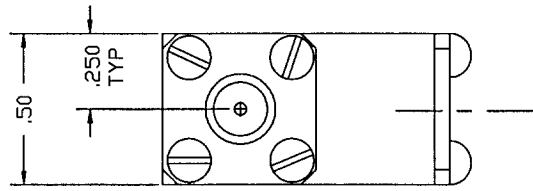


COMPUTER GENERATED DRAWING MANUAL CHANGES NOT AUTHORIZED		REVISIONS	
REV.	DESCRIPTION	DATE	RELEASED BY
NC	INITIAL RELEASE	2-5-87	T.R.
A	BLANKET ECN: 5515	12-29-98	M.T.
B	BLANKET ECN: 7395	9-21-00	M.T.
C	REV PER ECN: 8220		

SPECIFICATIONS:

FREQUENCY: 6.0 TO 18.0 GHz 6.0 TO 6.8 GHz
 VSWR: 1.50:1 MAX 1.80:1 MAX
 ISOLATION: 14 dB MIN 12 dB MIN
 INSERTION LOSS: 1.0 dB MAX 2.0 dB MAX
 TEMPERATURE:
 OPERATING: -40° TO +100°C -54° TO -40°C



CONNECTOR ORIENTATION			
DASH NO.	PORT 1	PORT 2	PORT 3
NONE	SMA FEMALE	SMA FEMALE	TERMINATION
-1	SMA MALE	SMA FEMALE	TERMINATION
-2	SMA FEMALE	SMA MALE	TERMINATION
-3	SMA MALE	SMA MALE	TERMINATION

* PART SHOWN IS SMI6018-NO DASH NO.

ITEM	QTY	FRAC	PART OR IDENTIFICATION NO.	QUANTITY	REVISIONS
PARTS LIST					
CONTRACT NO. SMT SIERRA MICROWAVE TECHNOLOGY TITLE: OUTLINE FOR SMI6018-X APPROVALS: NAME: J. DARJES DATE: 1-29-97 CHECKED: T.J. RODRIGUEZ DATE: 2-5-87 DATE OF PREP: 10/10 DRAWN BY:					
SIZE FROM NO. B 1CY63 DWG NO. 205-0147-001 REV C DO NOT SCALE DRAWING					

APPLICATION
204-0114-001 SMI6018-3
204-0045-001 SMI6018-18-2
204-0049-001 SMI6018
LIST OF MAT. USED ON