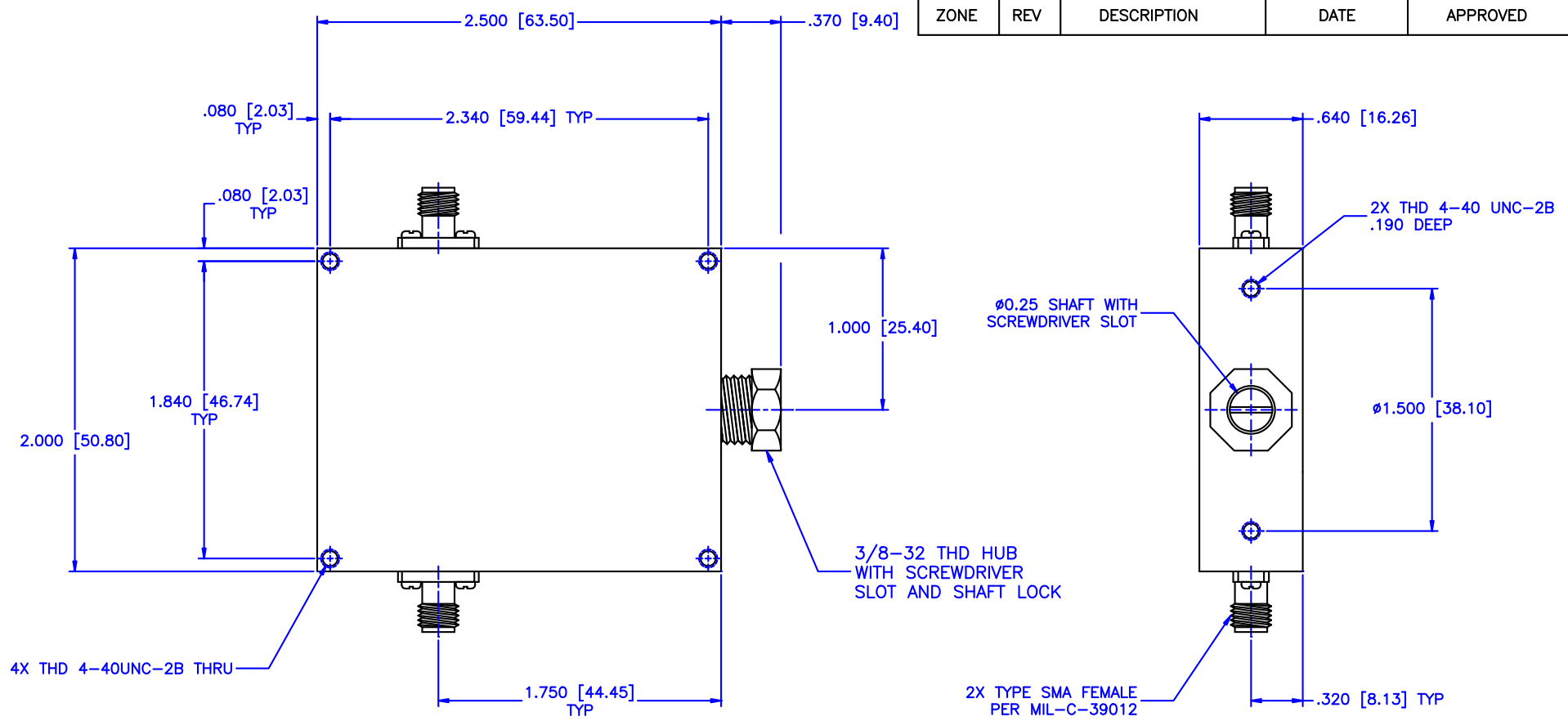


REVISIONS				
ZONE	REV	DESCRIPTION	DATE	APPROVED



Specification

Frequency range: 0.8–1.6 GHz
 Attenuation range: 15dB
 RF Power: 7W average, 3kW peak
 VSWR: 1.7:1
 Insertion Loss: 0.5dB Max.

Mechanical

Body: Aluminum
 Connectors: Stainless Steel
 Finish: Unique corrosion resistant 316 stainless steel epoxy coating IAW MIL-F-14072
 Weight: 5.2oz / 150gm

Environmental

Temp: -55 / +110 °C
 Shock: 15 G's, 11ms, 1/2 sine
 Vibration: 3 G's overall
 Altitude: 40,000ft. Survival 25,000ft Operating

MATERIAL:			MICROWAVE COMMUNICATIONS LABORATORIES INC. 7255 30TH AVE. N. SAINT PETERSBURG, FL 33710 TEL: (727) 344-6254 FAX: (727) 381-6116 http://WWW.MCLI.COM		SCALE:	N/A
			UNLESS OTHERWISE SPECIFIED: TOLERANCES IN (INCHES) OR [mm] (MILLIMETERS) FRACTIONS: ± 1/64 DECIMALS: ±.01 ±.005 ANGLE: ±1/2°		SHEET:	N/A
DRAWN:		PROPRIETARY NOTICE: THE INFORMATION IN THIS DRAWING IS PROPRIETARY AND SHALL NOT BE USED OR DISCLOSED WITHOUT WRITTEN PERMISSION FROM MICROWAVE COMMUNICATIONS LABORATORIES INC. (MCLI)		DRAWING TITLE:		
DATE:		THIRD ANGLE PROJECTION		ATTENUATOR, SLOTTED SHAFT		
APPROVED:				PART NO.:		
DATE:		CAGE CODE:		CVA1-15		
T. Nguyen		SIZE: A		REV: N/A		
10-13-2006		DWG NO.:		85243		
		DO NOT SCALE THE DRAWING				