

Surface Mount Low Pass Filter

SXLP-5+

50Ω DC to 5 MHz

Maximum Ratings

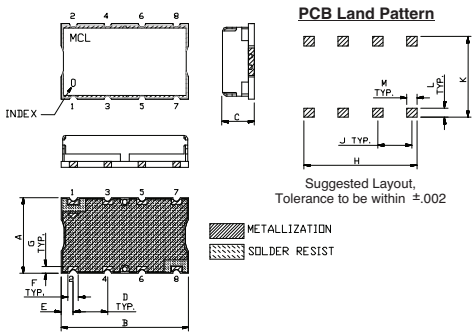
Operating Temperature	-40°C to 85°C
Storage Temperature	-55°C to 100°C
RF Power Input	0.5W Max.

Permanent damage may occur if any of these limits are exceeded.

Pin Connections

INPUT	1
OUTPUT	8
GROUND	2, 3, 4, 5, 6, 7

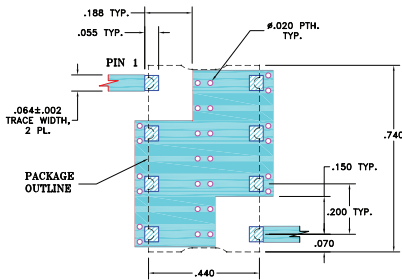
Outline Drawing



Outline Dimensions (inch/mm)

A	B	C	D	E	F	
.44	.74	.27	.200	.07	.060	
11.18	18.80	6.86	5.08	1.78	1.52	
G	H	J	K	L	M	wt.
.040	.660	.200	.470	.055	.060	grams
1.02	16.76	5.08	11.94	1.40	1.52	3.0

Demo Board MCL P/N: TB-368 Suggested PCB Layout (PL-230)



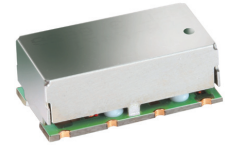
- NOTE:
- TRACE WIDTH IS SHOWN FOR FR4 WITH DIELECTRIC THICKNESS: .025"±.002". COPPER: 1/2 OZ. EACH SIDE. FOR OTHER MATERIALS TRACE WIDTH MAY NEED TO BE MODIFIED.
 - BOTTOM SIDE OF THE PCB IS CONTINUOUS GROUND PLANE.
- DENOTES PCB COPPER LAYOUT WITH SMOBC (SOLDER MASK OVER BARE COPPER)
 - DENOTES COPPER LAND PATTERN FREE OF SOLDER MASK

Features

- high rejection
- sharp cut-off
- shielded package
- aqueous washable
- low cost

Applications

- defense communications
- receivers / transmitters
- harmonic rejection



CASE STYLE: HF1139
PRICE: \$14.95 ea. QTY (1-9)

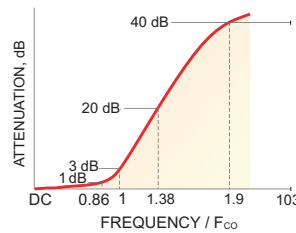
+RoHS Compliant

The +Suffix identifies RoHS Compliance. See our web site for RoHS Compliance methodologies and qualifications

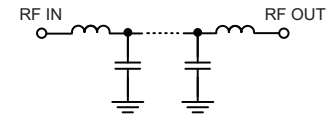
Low Pass Filter Electrical Specifications (T_{AMB} = 25°C)

PASSBAND (MHz)	f _{co} , MHz Nom.	STOPBAND (MHz)		VSWR (:1)	
		(Loss > 20dB)	(Loss > 40dB)	Passband Typ.	Stopband Typ.
DC - 5	5.8	8 - 11	11 - 600	1.7	18

Typical Frequency Response

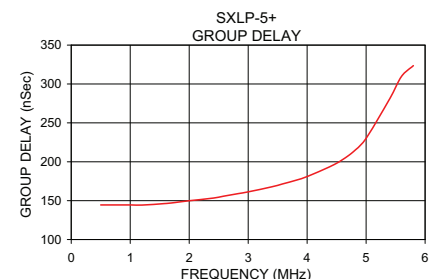
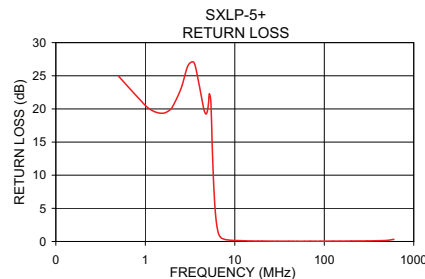
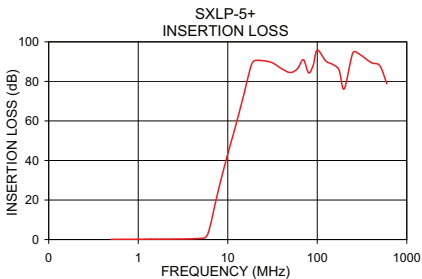


Functional Schematic



Typical Performance Data at 25°C

Frequency (MHz)	Insertion Loss (dB)		Return Loss (dB)	Frequency (MHz)	Group Delay (nSec)
	\bar{x}	σ			
0.5	0.14	0.01	24.96	0.5	144.47
1.0	0.19	0.01	20.52	1.0	144.53
3.0	0.28	0.01	26.53	1.2	144.36
5.0	0.59	0.02	20.05	1.6	146.31
5.6	1.03	0.08	14.37	1.8	148.02
5.8	1.75	0.15	8.91	2.0	149.91
6.0	3.12	0.26	5.25	2.4	153.25
6.2	5.18	0.37	3.04	2.8	158.65
6.5	9.03	0.47	1.42	3.0	161.28
7.2	18.17	0.54	0.46	3.4	167.81
8.0	26.98	0.55	0.27	3.6	171.89
11.0	50.31	0.79	0.13	3.8	175.98
15.0	72.81	3.70	0.08	4.0	181.00
20.0	85.05	5.02	0.07	4.4	194.27
40.0	83.17	2.38	0.05	4.8	214.04
80.0	84.66	1.98	0.04	5.0	230.15
100.0	92.67	3.38	0.05	5.4	281.00
400.0	87.76	6.66	0.11	5.6	309.78
600.0	77.91	3.06	0.32	5.8	323.56



For detailed performance specs & shopping online see web site

P.O. Box 350166, Brooklyn, New York 11235-0003 (718) 934-4500 Fax (718) 332-4661 The Design Engineers Search Engine Provides ACTUAL Data Instantly at minicircuits.com

Notes: 1. Performance and quality attributes and conditions not expressly stated in this specification sheet are intended to be excluded and do not form a part of this specification sheet. 2. Electrical specifications and performance data contained herein are based on Mini-Circuit's applicable established test performance criteria and measurement instructions. 3. The parts covered by this specification sheet are subject to Mini-Circuits standard limited warranty and terms and conditions (collectively, "Standard Terms"); Purchasers of this part are entitled to the rights and benefits contained therein. For a full statement of the Standard Terms and the exclusive rights and remedies thereunder, please visit Mini-Circuits' website at www.minicircuits.com/MCLStore/terms.jsp.

REV. OR
M112220
EDR-7482/1U
SXLP-5+
URJ/RAV
121015
Page 1 of 1