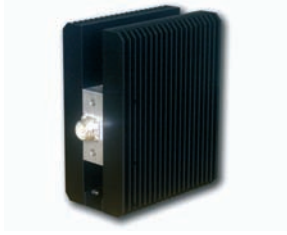
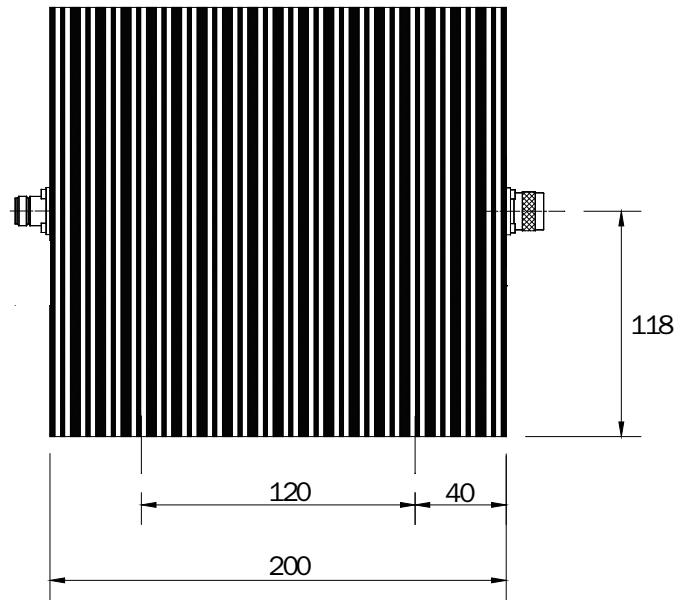
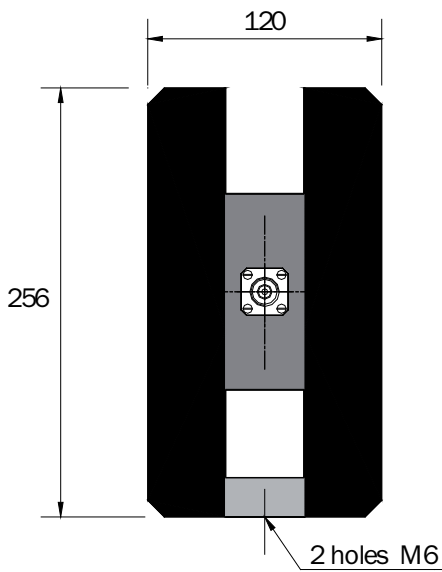
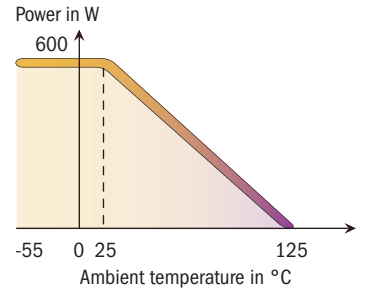




Standards  
NF C 96-315  
MIL-DTL-3933



Impedance  $50 \Omega \pm 5\%$   
 Frequency DC - 1 GHz (on request DC - 2.5 GHz)  
 Max VSWR  $\leq 1.30$  at 1 GHz  
 Temperature range  $-55$  to  $+125^\circ\text{C}$   
 Average power @  $25^\circ\text{C}$  600 W  
 Weight 8.2 kg



Dimensions in mm

Attenuation (dB)	P/N	Connector	Accuracy $\pm\Delta\alpha$ (dB)
3	<b>16-6581</b>	N m/f	0.75
6	<b>16-6582</b>	N m/f	0.75
30	<b>16-6527</b>	N m/f	1
40	<b>16-6653</b>	N m/f	1
40	<b>16-6606</b>	N f/f	1
40	<b>16-6834</b>	7-16f / Nf	1

Model available with 7-16 connector  
 Others attenuations on request