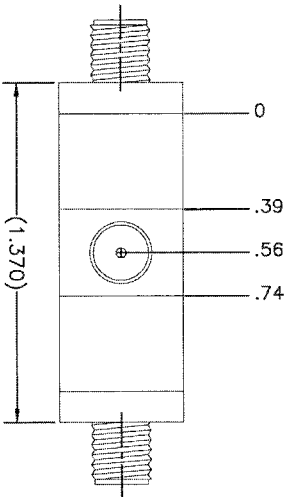
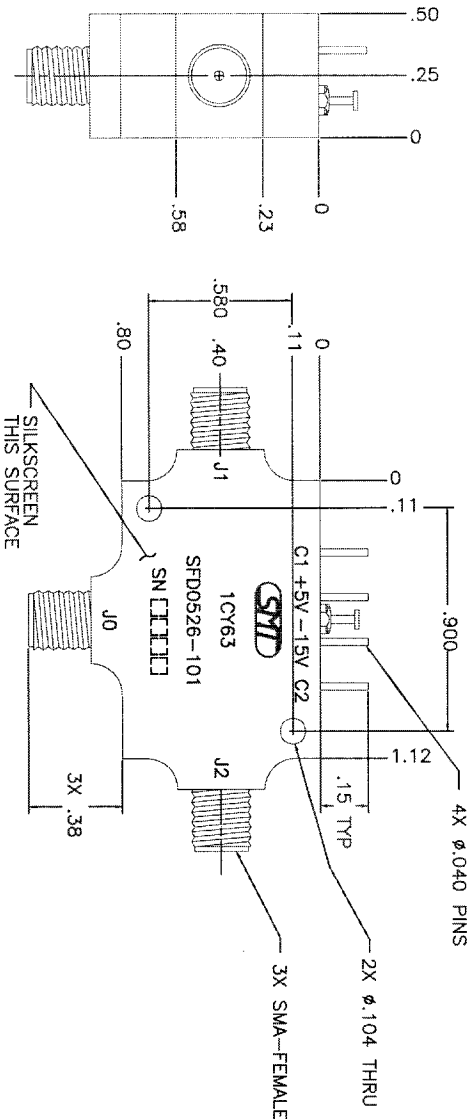
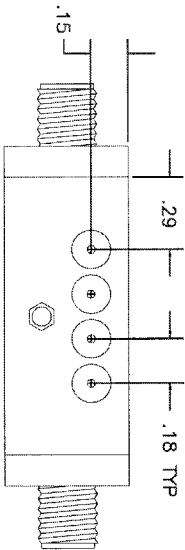


COMPUTER GENERATED DRAWING
MANUAL CHANGES NOT AUTHORIZED

REVISIONS			
REV.	DESCRIPTION	DATE	RELEASED BY
NC	INITIAL RELEASE		



SPECIFICATIONS:

FREQUENCY RANGE: 0.5-26.5 GHz

VSWR: 2.0:1 MAX

(ON OR OFF J1, J2)
(J0, ON STATE ONLY)

INSERTION LOSS:

0.5-4.0 GHz 1.7 dB MAX
4.0-8.0 GHz 2.1 dB MAX
8.0-12.0 GHz 2.3 dB MAX
12.0-18.0 GHz 2.9 dB MAX
18.0-20.0 GHz 3.4 dB MAX
20.0-26.5 GHz 4.0 dB MAX

ISOLATION:

0.5-12.0 GHz 65 dB MIN
12.0-26.5 GHz 60 dB MIN

OPERATING TEMP: -55° TO +100° C
STORAGE TEMP: -65° TO +125° C

SWITCHING SPEED: 25 n SEC MAX
(50% TTL to 10/90% RF)


DC POWER:

+5V @ 75 mA MAX
-15V @ 50 mA MAX

CONTROL:

TTL LOW INSERTION LOSS
TTL HIGH ISOLATION

ITEM	QTY	REQD	PART OR IDENTIFICATION NO.	DESCRIPTION OR DISCREPANCY	MATERIAL SPECIFICATION
PARTS LIST					

UNLESS OTHERWISE SPECIFIED DIMENSIONS ARE IN INCHES TOLERANCES ARE: FRACTIONS DECIMALS ANGLES .004 .002 ± .004 .010		CONTRACT NO.		 SIERRA MICROWAVE TECHNOLOGY
MATERIAL:		APPROVALS		
DRAWN: J. BEARD		DATE: 8/10/01		
CHECKED:		DESIGN ENG:		
MFG. & PACKAGING:		Q1:		
FINISH:				

		CHECKED		
		INSPEC ENG		
		DATE & PROCESS		
		QT		
THRU:				
OUTLINE FOR SFD0526-101				
APPLICATION		DO NOT SCALE DRAWING	SIZE	PSGM NO.
604-0076-001		SFD0526-101	B	1CY63
LIST OF MAT'L		USED ON	DWG NO.	605-0505-001
			SHEET	OF
			REV	NC