

Microstrip Isolators

Part Number: KTMI-3002A1

Main Features:

- Frequency Range: 34GHz - 36GHz
- Small Size, Low Profile, Compact Design
- High Isolation, Low Insertion Loss
- Wide Operating Temperature : -40°C~+70°C
- Commercial, Military and Space Applications

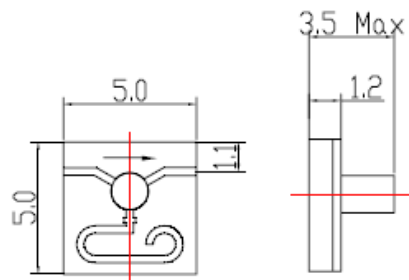
Electrical Specifications at Room Temperature:

Part Number	Freq. Range (GHz)	Bandwidth Max. (MHz)	Insertion Loss Max. (dB)	Isolation Min. (dB)	VSWR Max.	Forward Power (W)	Reverse Power (W)
KTMI-3002A1	34 - 36	full	1.2	16	1.40	2	1

Electrical Specifications at -40°C~+70°C Temperature:

Part Number	Freq. Range (GHz)	Bandwidth Max. (MHz)	Insertion Loss Max. (dB)	Isolation Min. (dB)	VSWR Max.	Forward Power (W)	Reverse Power (W)
KTMI-3002A1	34 - 36	full	1.3	15	1.50	2	1

Mechanical Dimensions (mm):



HOW TO ORDER

