

Bandpass Filter

ZFBP13-75+

75Ω 12.3 to 13.8 MHz



Maximum Ratings

Operating Temperature	-40°C to 85°C
Storage Temperature	-55°C to 100°C
RF Power Input	0.5W at 25°C

Permanent damage may occur if any of these limits are exceeded.

Features

- Good VSWR, 1.25:1 Typ @ Passband
- Excellent Rejection in the Stopband

Applications

- IF Signal Processing
- High Rejection Application
- Wire-Line Broadband Access
- Lab Use

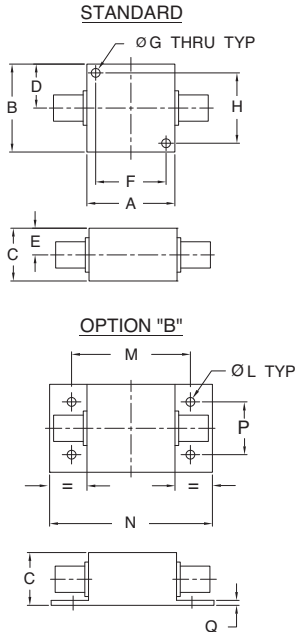
CASE STYLE: H16

Connectors	Model	Price	Qty.
BNC	ZFBP13-75+	\$59.95 ea.	(1-9)
BRACKET (OPTION "B")		\$5.00 ea.	(1+)

+RoHS Compliant

The +Suffix identifies RoHS Compliance. See our web site for RoHS Compliance methodologies and qualifications

Outline Drawing



Outline Dimensions (inch/mm)

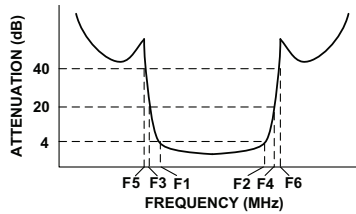
A	B	C	D	E	F	G
1.25	1.25	.75	.63	.38	1.000	.125
31.75	31.75	19.05	16.00	9.65	25.40	3.18

H	L	M	N	P	Q	wt.
1.000	.125	1.688	2.18	.75	.06	grams
25.40	3.18	42.88	55.37	19.05	1.52	70

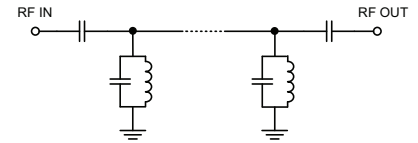
Bandpass Filter Electrical Specifications (T_{AMB} = 25°C)

CENTER FREQ. (MHz)	PASSBAND (MHz) (Loss < 4dB) F1 - F2	STOPBANDS (MHz)				VSWR (:1)	
		Loss > 20dB		Loss > 40dB		Passband Max.	Stopband Typ.
13	12.3 - 13.8	F3 10.6	F4 16	F5 10	F6 17.5 - 300	1.4	18

Typical Frequency Response



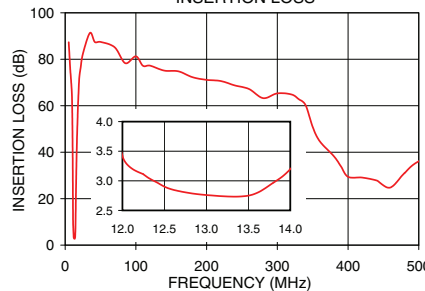
Functional Schematic



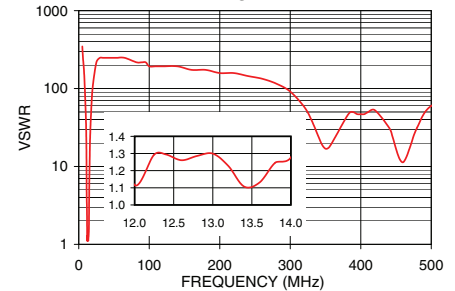
Typical Performance Data at 25°C

Frequency (MHz)	Insertion Loss (dB)	VSWR (:1)
5.0	87.34	347.44
10.0	57.83	45.72
10.6	39.87	25.94
10.8	30.57	18.90
11.0	19.01	10.13
11.2	9.35	4.25
12.3	3.11	1.29
13.0	2.76	1.30
13.8	2.97	1.25
14.0	3.20	1.28
14.6	7.73	2.87
15.0	16.86	6.91
15.5	27.53	12.80
16.0	36.14	20.95
17.0	49.40	39.49
17.5	54.55	48.26
20.0	72.27	108.58
50.0	87.48	248.17
100.0	81.25	193.02
200.0	71.14	157.93
300.0	65.31	91.43

ZFBP13-75+ INSERTION LOSS



ZFBP13-75+ VSWR



For detailed performance specs & shopping online see web site

P.O. Box 350166, Brooklyn, New York 11235-0003 (718) 934-4500 Fax (718) 332-4661 The Design Engineers Search Engine Provides ACTUAL Data Instantly at minicircuits.com

IF/RF MICROWAVE COMPONENTS

Notes: 1. Performance and quality attributes and conditions not expressly stated in this specification sheet are intended to be excluded and do not form a part of this specification sheet. 2. Electrical specifications and performance data contained herein are based on Mini-Circuit's applicable established test performance criteria and measurement instructions. 3. The parts covered by this specification sheet are subject to Mini-Circuits standard limited warranty and terms and conditions (collectively, "Standard Terms"); Purchasers of this part are entitled to the rights and benefits contained therein. For a full statement of the Standard Terms and the exclusive rights and remedies thereunder, please visit Mini-Circuits' website at www.minicircuits.com/MCLStore/terms.jsp.

REV. OR
M107612
EDR-7767U
ZFBP13-75+
URJ/RAV
121017
Page 1 of 1