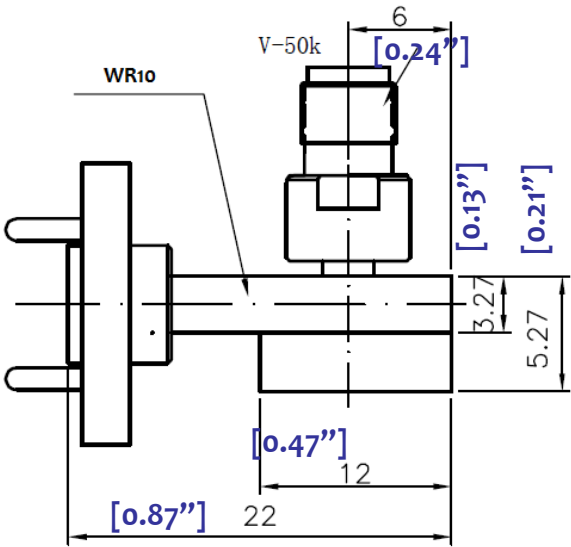
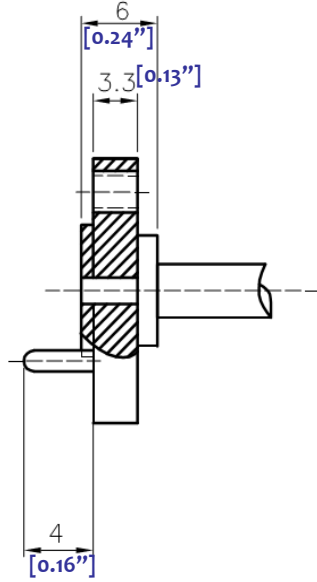
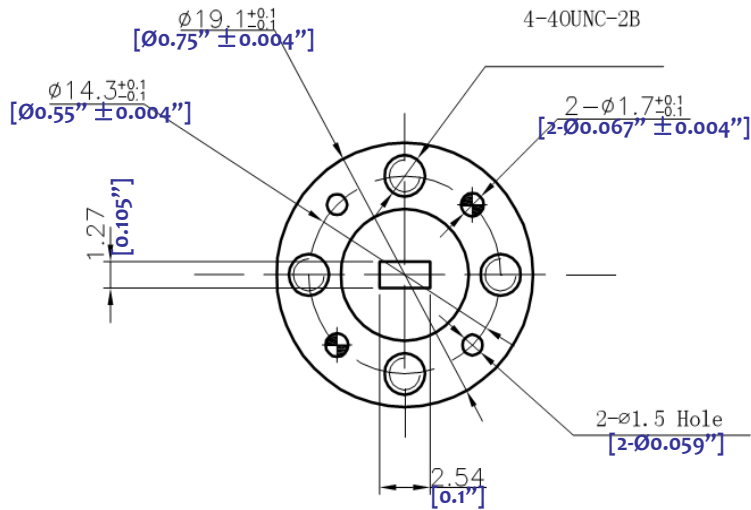


# AVEGUIDE TO COAXIAL ADAPTER


## --- RFWA10V



3.0 Electrical Specifications		
3.1	Frequency Range	75 ~ 80GHz
3.2	Insertion Loss	0.6dB
3.2	Max. VSWR	2.00 : 1 (max.)

1.0 Mechanical Specifications		
1.1	Waveguide type	Rectangular Waveguide WR10
1.2	Flange type	UG385/U
1.3	Flange Holes	Through
1.4	Basis-material	Aluminum, Brass, Alloyed Cuprum,
1.5	Coaxial Connector	V (1.85mm) Female
1.6	Internal Finish	Silver Plated chromate or conversion
1.7	External Finish	Painted Blue/black epoxy enamel

2.0 Environment specifications		
2.1	Operation Temp.	-40°C~+85°C
2.2	Storage Temp.	-50°C~+125°C
2.3	Altitude	45000 ft
2.4	Vibration	10g rms (15 degree 2KHz)
2.5	Humidity	100% RH at 35c, 95%RH at 40 deg c
2.6	Shock	20G for 11msc

PAGE 1 OF 1		DATE	Jun 2 <sup>nd</sup> 2005
<small>PROPRIETARY INFORMATION THE INFORMATION CONTAINED IN THIS DOCUMENT IS THE PROPERTY OF RF-LAMBDA EXCEPT AS SPECIFICALLY AUTHORIZED IN WRITINGS BY RF-LAMBDA. THE HOLDER OF THIS DOCUMENT SHALL KEEP ALL INFORMATION CONTAINED HEREIN CONFIDENTIAL AND SHALL PROTECT SAME IN THE WHOLE OR IN PART FROM DISCLOSURE AND DISSEMINATION OF ALL THIRD PARTIES AND SHALL USE SAME FOR OPERATING AND MAINTENANCE PURPOSES ONLY</small>		DESIGN	RFPC
		RF-LAMBDA	RFPC
		CAD MODEL REVISION	19
		ASSEMBLY REVISION	V552
 <b>RFWA10 WAVEGUIDE TO COAXIAL ADAPTER</b>		ASSEMBLY NAME	RFLVR16
		DRAWING NUMBER	D05-3
www.rflambda.com		RF-LAMBDA	SIZE LT SHEETS 1 OF 1