



50 Ohm 0.25 Watts Beryllium Copper SMP  
Female RF Load Up To 26.5 GHz

TECHNICAL DATA SHEET

PE6181

50 Ohm 0.25 Watts Beryllium Copper SMP Female RF Load Up To 26.5 GHz

**Configuration**

Connector	SMP Female
Connector Specification	Mil-STD-348
Connection Method	Push-On
Body Style	Straight

**Electrical Specifications**

Frequency Range, GHz	DC to 26.5
Impedance, Ohms	50
Maximum VSWR	1.2:1
Maximum Input Power, Watts	0.25

**Mechanical Specifications**

**Temperature**

Operating Range, deg C	-55 to +125
------------------------	-------------

**Size**

Length, in [mm]	0.315 [8]
Width/Dia., in [mm]	0.15 [3.81]

**Connector**

Type	SMP Female
Inner Conductor Material and Plating	Beryllium Copper, Gold
Inner Conductor Plating Specification	MIL-G-45204, Type 1, Grade C, Class 1
Outer Conductor Material and Plating	Beryllium Copper, Gold
Outer Conductor Plating Specification	MIL-G-45204, Type 1, Grade C, Class 1
Body Material and Plating	Beryllium Copper, Gold
Body Plating Specification	MIL-G-45204, Type 1, Grade C, Class 1
Dielectric Type	PTFE

**Compliance Certifications** (visit [www.Pasternack.com](http://www.Pasternack.com) for current document)

RoHS Compliant	Yes
----------------	-----

Click the following link (or enter part number in "SEARCH" on website) to obtain additional part information including price, inventory and certifications: [50 Ohm 0.25 Watts Beryllium Copper SMP Female RF Load Up To 26.5 GHz PE6181](#)

The information contained in this document is accurate to the best of our knowledge and representative of the part described herein. It may be necessary to make modifications to the part and/or the documentation of the part, in order to implement improvements. Pasternack reserves the right to make such changes as required. Unless otherwise stated, all specifications are nominal.





50 Ohm 0.25 Watts Beryllium Copper SMP  
Female RF Load Up To 26.5 GHz

TECHNICAL DATA SHEET

PE6181

**Plotted and Other Data**

Notes:

Values at 25 °C, sea level

50 Ohm 0.25 Watts Beryllium Copper SMP Female RF Load Up To 26.5 GHz from Pasternack Enterprises has same day shipment for domestic and International orders. Our RF, microwave and fiber optic products maintain a 99% availability and are part of the broadest selection in the industry.

Click the following link (or enter part number in "SEARCH" on website) to obtain additional part information including price, inventory and certifications: [50 Ohm 0.25 Watts Beryllium Copper SMP Female RF Load Up To 26.5 GHz PE6181](http://www.pasternack.com/0.25-watts-smp-female-rf-load-up-to-26.5-ghz-pe6181)

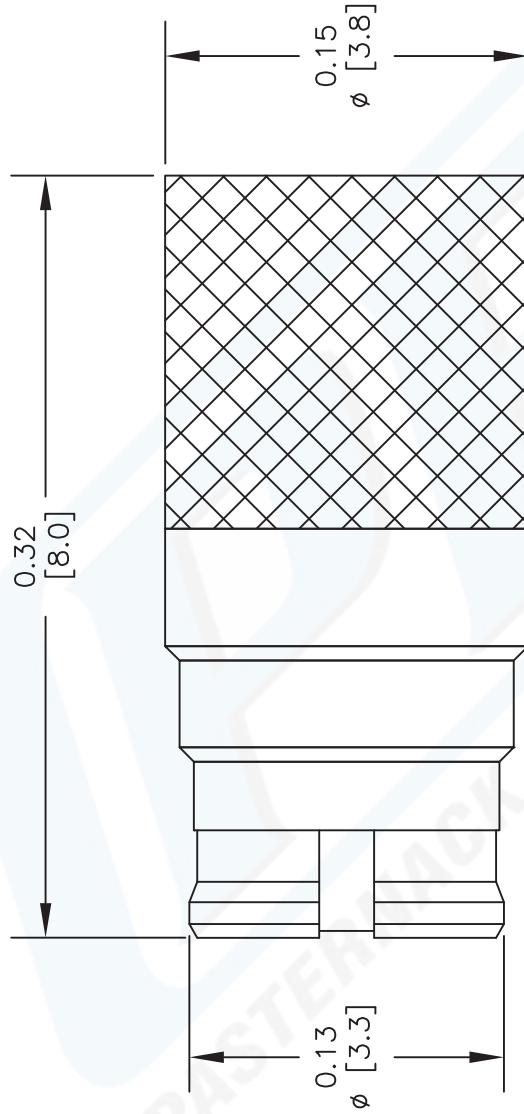
URL: <http://www.pasternack.com/0.25-watts-smp-female-rf-load-up-to-26.5-ghz-pe6181-p.aspx>

The information contained in this document is accurate to the best of our knowledge and representative of the part described herein. It may be necessary to make modifications to the part and/or the documentation of the part, in order to implement improvements. Pasternack reserves the right to make such changes as required. Unless otherwise stated, all specifications are nominal.



# PE6181 CAD Drawing

50 Ohm 0.25 Watts Beryllium Copper SMP Female RF Load Up To 26.5 GHz



NOTES:  
 1. UNLESS OTHERWISE SPECIFIED ALL DIMENSIONS ARE NOMINAL.  
 2. ALL SPECIFICATIONS ARE SUBJECT TO CHANGE WITHOUT NOTICE AT ANY TIME.  
 3. DIMENSIONS ARE IN INCHES [mm].

DWG TITLE		CAD FILE		SCALE	SIZE
PE6181		021213	N/A	A	2233
FSCM NO. 53919					

**PE PASTERNAK®**  
 Pasternack Enterprises, Inc.  
 P.O. Box 16759 | Irvine | CA | 92623  
**Phone:** (949) 261-1920 | **Fax:** (949) 261-7451  
**Website:** www.pasternack.com | **E-Mail:** sales@pasternack.com