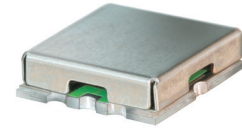


# Bandpass Filter

## RBP-253+

50Ω 186 to 340 MHz



CASE STYLE: GP731  
PRICE: \$13.70 ea. QTY (10)

**+RoHS Compliant**  
The +Suffix identifies RoHS Compliance. See our web site for RoHS Compliance methodologies and qualifications

Available Tape and Reel at no extra cost	
Reel Size	Devices/Reel
7"	10, 20, 50, 100, 200
13"	500, 1000

### Maximum Ratings

Operating Temperature	-40°C to 85°C
Storage Temperature	-55°C to 100°C
RF Power Input	0.5W at 25°C

Permanent damage may occur if any of these limits are exceeded.

### Pin Connections

RF IN	2
RF OUT	6
GROUND	1,3,4,5,7,8

### Features

- good VSWR, 1.7:1 typ. @ passband
- small size 0.35" x 0.35"
- shielded case
- aqueous washable

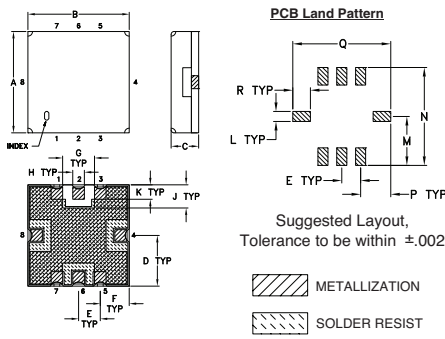
### Applications

- harmonic rejection
- transmitters / receivers
- navigation

### Bandpass Filter Electrical Specifications (T<sub>AMB</sub> = 25°C)

CENTER FREQ. (MHz)	PASSBAND (MHz) (Loss < 3dB)	STOPBANDS (MHz)				VSWR (:1)		
		Loss > 20dB		Loss > 35dB		Passband		Stopband
F <sub>c</sub>	F <sub>1</sub> - F <sub>2</sub>	F <sub>3</sub>	F <sub>4</sub>	F <sub>5</sub>	F <sub>6</sub>	Typ.	Max.	Typ.
253	186 - 340	140	440	120	500 - 3000	1.7	2.1	18

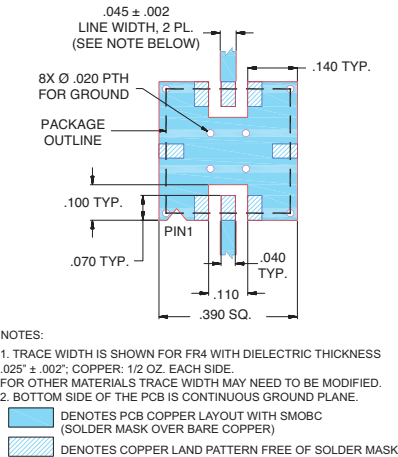
### Outline Drawing



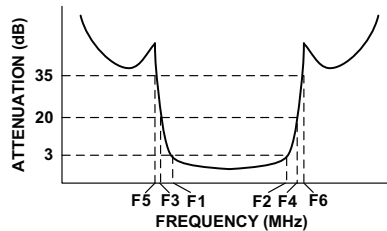
### Outline Dimensions (inch/mm)

A	B	C	D	E	F	G	H	J
.350	.350	.100	.175	.075	.100	.110	.040	.080
8.89	8.89	2.54	4.45	1.93	2.54	2.79	1.02	2.03
K	L	M	N	P	Q	R	wt	
.050	.040	.195	.390	.120	.390	.070	grams	
1.27	1.02	4.95	9.91	3.05	9.91	1.78	0.25	

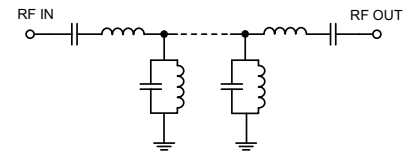
### Demo Board MCL P/N: TB-332 Suggested PCB Layout (PL-176)



### Typical Frequency Response



### Functional Schematic



### Typical Performance Data at 25°C

Frequency (MHz)	Insertion Loss (dB)	VSWR (:1)
0.3	97.50	1737.18
50	81.95	868.59
120	41.47	133.63
140	28.14	54.29
163	10.51	9.53
170	5.40	3.68
186	1.82	1.47
253	1.17	1.34
263	1.28	1.52
300	1.35	1.51
340	1.82	1.45
345	2.16	1.69
362	5.38	4.23
380	11.59	11.61
440	29.39	43.44
500	40.20	72.39
2000	78.34	59.91
3000	47.45	45.72

