



### Features

- Frequency Range: 100~3500MHz
- Standard Hermetic Package TO-8C
- Operating Temperature Range: -55°C~+85°C

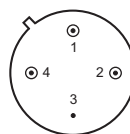
### Electrical (50 Ω, V<sub>CC</sub>=+12V, T<sub>A</sub>=-55°C~+85°C)

Parameter	Symbol	Unit	Guaranteed	Typical
Frequency Range	f <sub>L</sub> ~f <sub>H</sub>	MHz	100~3000	100~3000
Gain	G <sub>p</sub>	dB	≥ 11.0	12.5
Gain Flatness	Δ G <sub>p</sub>	dB	≤ 1.5	1.0
Noise Figure	F <sub>n</sub>	dB	≤ 3.5 Δ #	2.7
Input VSWR	VSWR <sub>i</sub>	--	≤ 2.0:1 Δ	1.6:1
Output VSWR	VSWR <sub>o</sub>	--	≤ 2.0:1 Δ	1.4:1
For 1dB Compression	P <sub>-1</sub>	dBm	≥ 24.0 Δ	25.0
Supply Current	I <sub>CC</sub>	mA	--	150

Note: “ Δ ” T<sub>A</sub>=24 ± 1°C.

### Maximum Ratings

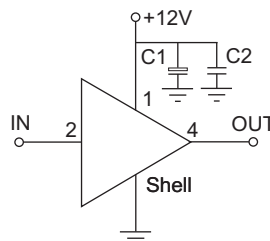
Power supply: +13.5V<sub>DC</sub>  
 RF input: +15dBm  
 Storage Temp: +125°C



TO-8C

### Application Notes

1. Typical application shown as right, C<sub>1</sub>=3.3~22 μF, C<sub>2</sub>=3300~6800pF.
2. ESD observe handling precautions.
3. Connectorized package (SMA-1) available.
4. See assembly section for outline and mounting information.



### Typical Curves

