

DESCRIPTION

PMI MODEL NUMBER PS-360-DC-IR-9G10G IS A 9.0 TO 10.0 GHZ DIGITALLY CONTROLLED ANALOG PHASE SHIFTER WITH CAPABILITY FOR PHASE SHIFTING FROM 0° TO 360°.

REVISIONS		DATE	APPROVED
ZONE	REV.	DESCRIPTION	
	A	ORIGINAL RELEASE	11/27/12

SPECIFICATIONS

- FREQUENCY RANGE: 9.0 TO 10.0 GHZ
(OTHER FREQUENCY RANGES AVAILABLE)
- INSERTION LOSS: 11.5 dB Max
- VSWR: 1.75:1 Max
- PHASE ACCURACY: ±10° Typ
- SWITCHING SPEED: 500 ns Typ.
- OPERATING POWER: +20 dBm Typ
- SURVIVAL POWER: +30 dBm Max
- CONTROL: 10 BIT TTL
- POWER SUPPLY:
 - +V: +5V @ 200 mA MAX.
 - +V: +12V to +15V @ 100 mA MAX.
 - V: -12V to -15V @ 70 mA MAX.
- SIZE: (L) 4.95" X (W) 3.38" X (H) 1.02"
- WEIGHT: 13 OUNCES TYP.
- FINISH: PAINTED GRAY

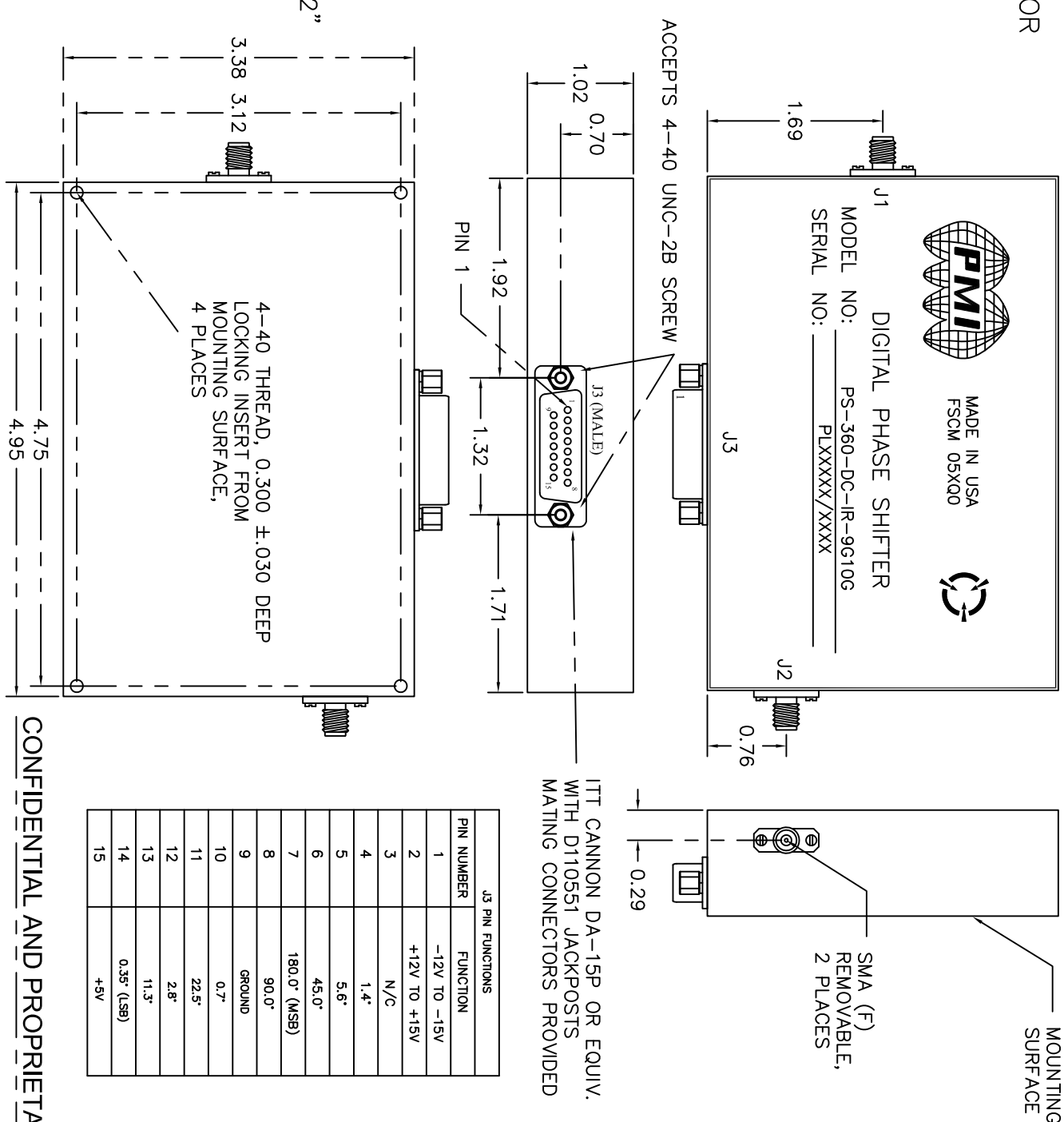
PHASE SHIFTER INPUT/OUTPUT INFORMATION

BI-DIRECTIONAL UNIT

DATA TAKEN
 J1 - INPUT
 J2 - OUTPUT

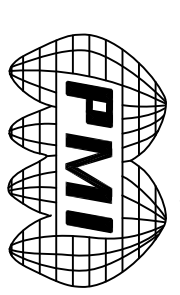
ENVIRONMENTAL RATINGS

- TEMPERATURE: -55°C TO +85°C (OPERATING)
-65°C TO +125°C (STORAGE)
- HUMIDITY: MIL-STD-202F, METHOD 103B COND. B
- SHOCK: MIL-STD-202F, METHOD 213B COND. B
- VIBRATION: MIL-STD-202F, METHOD 204D COND. B
- ALTITUDE: MIL-STD-202F, METHOD 105C COND. B
- TEMPERATURE CYCLE: MIL-STD-202F, METHOD 107D COND. A



CONFIDENTIAL AND PROPRIETARY

PLANAR MONOLITHICS INDUSTRIES, INC.
 7311-F GROVE ROAD
 FREDERICK, MARYLAND 21704 USA
 TEL: 301-662-5019 FAX: 301-662-1731
 WEBSITE: www.pmi-irf.com
 E-MAIL: sales@pmi-irf.com
 ISO 9001:2008 CERTIFIED



ALL DIMENSIONS ARE IN INCHES
 TOLERANCES:
 X.XX ±0.020
 X.XXX ±0.010

APPROVALS	DATE	TITLE	SIZE	FSCM NO.	DWG NO.	REV.
ISSUED	11/27/12	PRODUCT FEATURE	A	05X00	27018061	A
DRAWN: JJR		SCALE: N:S		SHEET 1 OF 1		