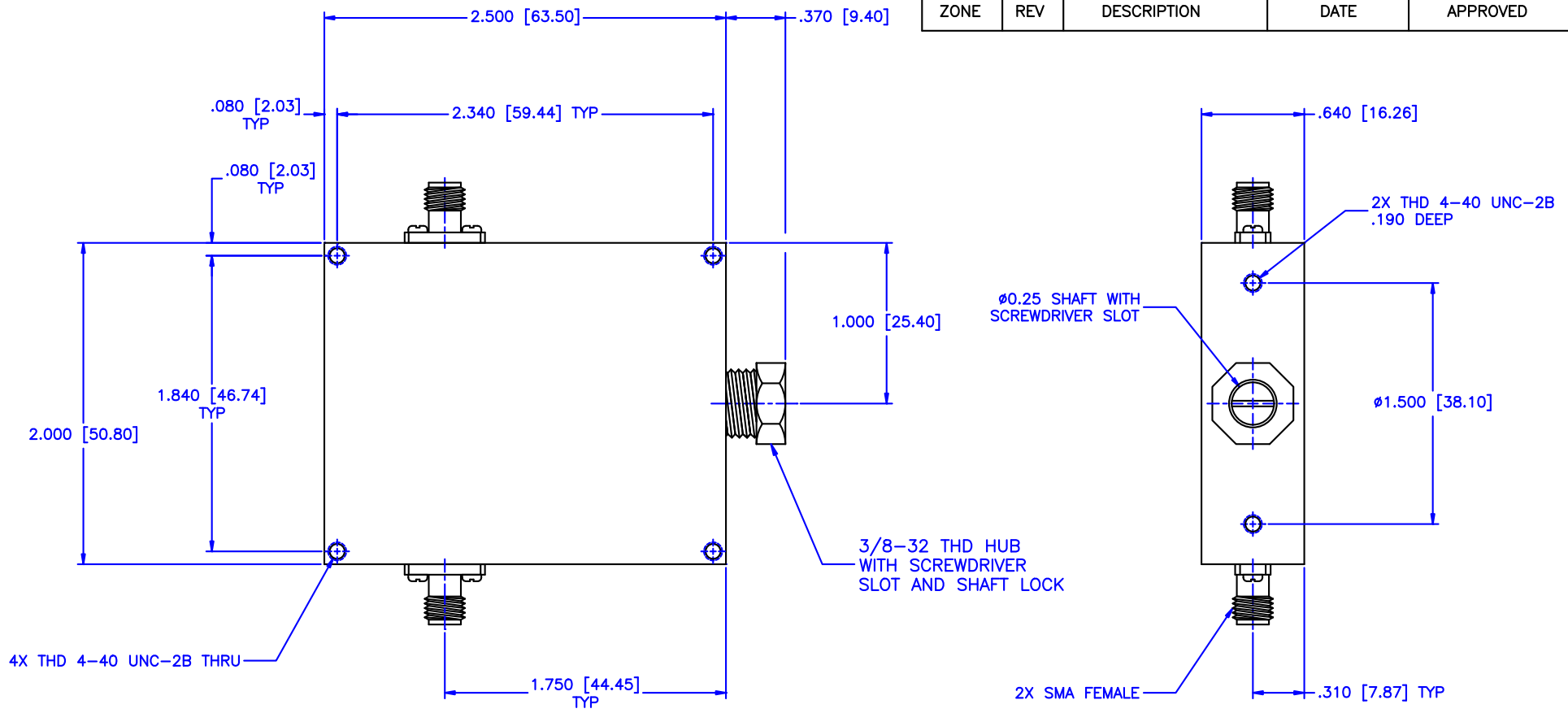


REVISIONS				
ZONE	REV	DESCRIPTION	DATE	APPROVED



Specifications:

Frequency Range: 1-8 GHz  
 Attenuation: 10dB  
 Insertion Loss: 0.5 Max.  
 VSWR: 1.50:1  
 RF Power: 7W Average, 3kW Peak

Environmental:

Temperature range: -55°C to +110°C  
 Shock: 15 G's, 11mS, 1/2 sine  
 Vibration: 3 G's overall  
 Altitude: 40,000 ft. Survival 25,000ft Operating

MATERIAL:		<b>MCLI</b> MICROWAVE COMMUNICATIONS LABORATORIES INC. 7255 30TH AVE. N. SAINT PETERSBURG, FL 33710 TEL: (727) 344-6254 FAX: (727) 381-6116 <a href="http://WWW.MCLI.COM">http://WWW.MCLI.COM</a>	SCALE:	N/A
			SHEET:	N/A
UNLESS OTHERWISE SPECIFIED: TOLERANCES IN (INCHES) OR [mm] (MILLIMETERS) FRACTIONS: ± 1/64 DECIMALS: ±.01 ±.005 ANGLE: ±1/2°		DRAWING TITLE:	CONTINUOUSLY VARIABLE ATTENUATOR	
DRAWN: Paiboon Luekhamhan		DATE:	02-08-2011	
APPROVED: T. Nguyen		DATE:	02-08-2011	
THIRD ANGLE PROJECTION		PART NO.:	CVA17-10	
CAGE CODE:		SIZE:	REV:	DWG NO.:
0D2L5		A	N/A	85385
DO NOT SCALE THE DRAWING				