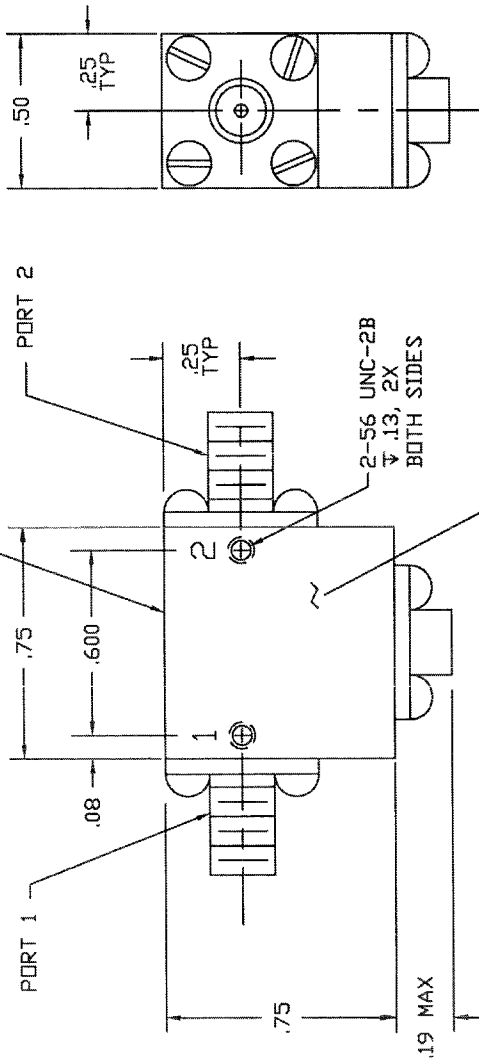


COMPUTER GENERATED DRAWING
MANUAL CHANGES NOT AUTHORIZED

REVISIONS

REV.	DESCRIPTION	DATE	RELEASED BY
NC	INITIAL RELEASE	3-30-93	T. R.
A	REV PER ECN: 5515	4-28-97	T. R.
B	REV PER BLANKET ECN: 7077		

LABEL WITH MODEL NO.
AND SERIAL NO.
THIS SURFACE



SPECIFICATIONS:

1. FREQUENCY RANGE: 4.3 TO 5.3 GHZ
2. ISOLATION: 20 dB MIN
3. INSERTION LOSS: 0.4 dB MAX
4. VSWR: 1.25:1 MAX
5. TEMPERATURE: -20° TO +65°C

PART DRAWN IS SMI4353- NO DASH NUMBER.

CONNECTOR ORIENTATION			
DASH NO.	PORT 1	PORT 2	PORT 3
NONE	SMA FEMALE	SMA FEMALE	TERMINATED
-1	SMA MALE	SMA FEMALE	TERMINATED
-2	SMA FEMALE	SMA MALE	TERMINATED
-3	SMA MALE	SMA MALE	TERMINATED

ITEM	QTY	FROM	PART OR	NUMERICAL	MATERIAL
	REQ'D	NO.	IDENTIFICATION NO.	OR	DESCRIPTION
PARTS LIST					

CONTRACT NO.		APPROVALS		DATE
SIERRA MICROWAVE TECHNOLOGY		P. J. C.		1-20-93
TITLE:		CHECKED:		3-30-93
OUTLINE FOR SMI4353-X		DRAWN BY: T. RODRIGUEZ		
		DATE & PROVISION:		
		G.L.		

REV	DESCRIPTION	DATE	RELEASED BY
204-0159-001	SMI4353-1 & -2		
204-0055-001	SMI4353		
LIST OF MAT'L USED ON			
APPLICATION			
DO NOT SCALE DRAWING			
SIZE	PSCM NO.	DWG NO.	REV
B	ICY63	205-0179-001	B
SHEET	OF		