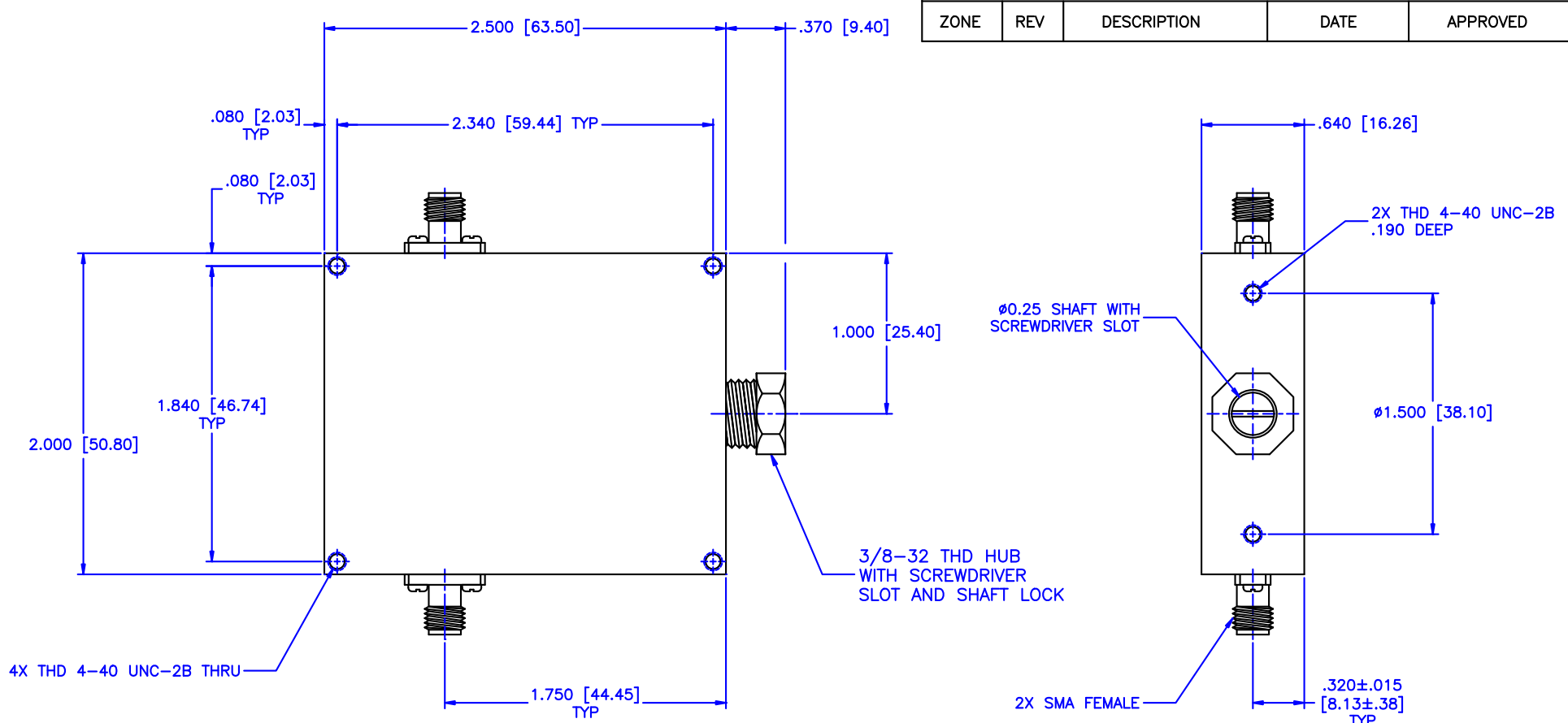


REVISIONS				
ZONE	REV	DESCRIPTION	DATE	APPROVED



Specifications:

Frequency Range: 0.8-2 GHz  
 Attenuation: 20 dB  
 Insertion Loss: 0.9 Max.  
 VSWR: 1.70:1  
 RF Power: N/A

Environmental:

Temperature range: -55°C to +110°C  
 Shock: 15 G's, 11mS, 1/2 sine  
 Vibration: 3 G's overall  
 Altitude: 40,000 ft. Survival 25,000ft Operating

MATERIAL:			MICROWAVE COMMUNICATIONS LABORATORIES INC. 7255 30TH AVE. N. SAINT PETERSBURG, FL 33710 TEL: (727) 344-6254 FAX: (727) 381-6116 http://WWW.MCLI.COM		SCALE:	N/A	
			UNLESS OTHERWISE SPECIFIED: TOLERANCES IN (INCHES) OR [mm] (MILLIMETERS) FRACTIONS: ± 1/64 DECIMALS: ±.01 ±.005 ANGLE: ±1/2°		DRAWING TITLE:	SMA FEMALE ATTENUATOR	
DRAWN:		PROPRIETARY NOTICE: THE INFORMATION IN THIS DRAWING IS PROPRIETARY AND SHALL NOT BE USED OR DISCLOSED WITHOUT WRITTEN PERMISSION FROM MICROWAVE COMMUNICATIONS LABORATORIES INC. (MCLI)		PART NO.:			CVA1-20
DATE:		THIRD ANGLE PROJECTION		CAGE CODE:	SIZE:	REV:	
APPROVED:				0D2L5	A	N/A	
T. Nguyen		DATE:		DO NOT SCALE THE DRAWING		DWG NO.	
04-23-2007		04-23-2007				82811	