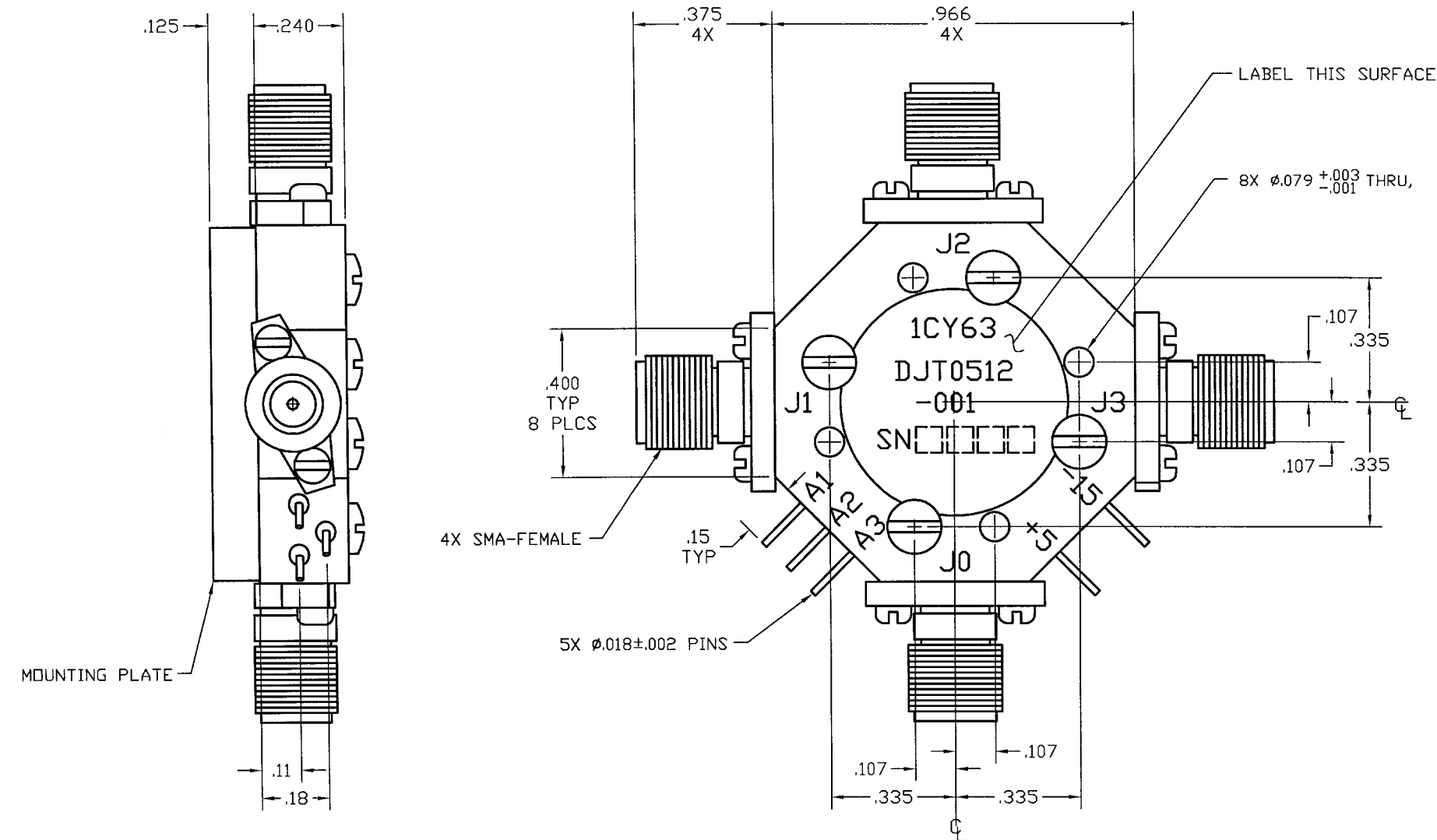


COMPUTER GENERATED DRAWING
MANUAL CHANGES NOT AUTHORIZED


REVISIONS

REV.	DESCRIPTION	DATE	RELEASED BY
NC	INITIAL RELEASE	10-10-90	L RACE
A	6822, 9830	5/09/05	R.T.



SPECIFICATIONS:

FREQUENCY:	0.5 - 12.0 GHz
INSERTION LOSS:	0.5-4.0 GHz 1.4 dB MAX 4.0-12.0 GHz 2.0 dB MAX
VSWR:	2.0:1 MAX
ISOLATION:	0.5-12.0 GHz 60 dB MIN
SWITCHING SPEED:	75nSEC
CONTROL:	TTL LOW - INSERTION LOSS TTL HI - ISOLATION
TEMPERATURE:	OPERATING: -54° TO +100° C STORAGE: -54° TO +100° C
BIAS CONDITIONS:	+5V @ 100 mA MAX -15V @ 50 mA MAX

ITEM	QTY REQ'D	FSCM NO.	PART OR IDENTIFICATION NO.	NOMENCLATURE OR DESCRIPTION	MATERIAL SPECIFICATION
PARTS LIST					
UNLESS OTHERWISE SPECIFIED DIMENSIONS ARE IN INCHES TOLERANCES ARE: FRACTIONS DECIMALS ANGLES ± .XX± .02 ± XXX± .010				CONTRACT NO.	 SIERRA MICROWAVE TECHNOLOGY TITLE: OUTLINE FOR DJT0512-001
MATERIAL:				APPROVALS	
FINISH:				DATE	
DRAWN: PJ CRAWFORD				10-10-90	
CHECKED: L RACE				10-10-90	
DESIGN ENG. L RACE				10-10-90	
MAT. & PROCESSES					
Q.A.					
SIZE				FSCM NO.	DWG NO.
B				1CY63	605-0051-001
BRDR SCALE					REV
SHEET				OF	A

603-0012-001	DJT0512-001
LIST OF MAT'L	USED ON
APPLICATION	

DO NOT SCALE DRAWING