

Plug-In Low Pass Filter

PBLP-200+ PBLP-200

50Ω Flat Time Delay DC to 120 MHz

Maximum Ratings

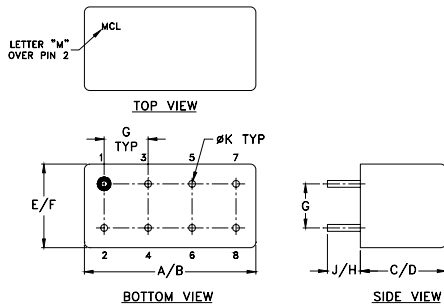
Operating Temperature	-55°C to 100°C
Storage Temperature	-55°C to 100°C
RF Power Input	0.5W max.

Permanent damage may occur if any of these limits are exceeded.

Pin Connections

INPUT	1
OUTPUT	8
GROUND	2,3,4,5,6,7
CASE GROUND	2,3,4,5,6,7

Outline Drawing



Outline Dimensions (inch/mm)

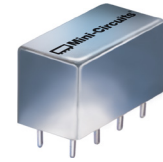
A	B	C	D	E	F
.770	.800	.385	.400	.370	.400
19.56	20.32	9.78	10.16	9.40	10.16
G	H	J	K		wt
.200	.20	.14	.031		grams
5.08	5.08	3.56	0.79		5.2

Features

- flat group delay for low pulse distortion
- rugged shielded case, hermetic
- other PBLP models available with wide selection of cut-off frequencies

Applications

- linear modulation techniques
- voice transmission applications
- digital communications



CASE STYLE: A01
PRICE: \$22.20 ea. QTY: 1-9

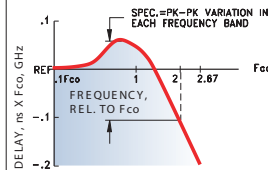
+RoHS Compliant

The +Suffix identifies RoHS Compliance. See our web site for RoHS Compliance methodologies and qualifications

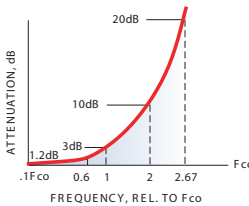
Low Pass Filter Electrical Specifications

PASSBAND (MHz) (loss <1.2 dB) Min.	fco, MHz Nom.	STOPBAND (MHz)		VSWR (:1)		GROUP DELAY VARIATION (nsec)		
		(loss > 10 dB)	(loss > 20 dB)	DC-0.2fco X	DC-0.6fco X	DC-fco X	DC-2fco X	DC-2.67fco X
DC-120	200	400-534	534	1.6:1	1.9:1	0.4	1.3	1.6

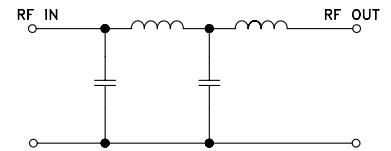
TYPICAL GROUP DELAY



TYPICAL FREQUENCY RESPONSE INSERTION LOSS

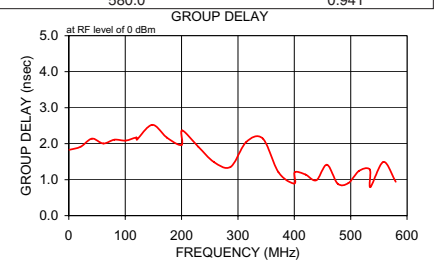
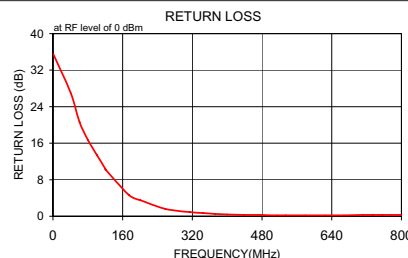


electrical schematic



Typical Performance Data

Frequency (MHz)	Insertion Loss (dB)		Return Loss (dB)	Frequency (MHz)	Group Delay (nsec)
	\bar{x}	σ			
1.0	0.04	0.1	35.5	1.0	1.829
41.0	0.10	0.1	27.0	21.0	1.915
61.0	0.16	0.1	20.6	41.0	2.140
81.0	0.22	0.1	16.6	61.0	2.006
101.0	0.33	0.1	13.4	81.0	2.109
120.0	0.52	0.1	10.4	101.0	2.087
121.0	0.53	0.1	10.2	120.0	2.170
174.0	2.10	0.1	4.7	121.0	2.113
200.0	3.22	0.1	3.5	148.0	2.521
201.0	3.26	0.1	3.5	174.0	2.169
258.0	6.65	0.2	1.6	200.0	1.964
315.0	9.45	0.2	0.9	201.0	2.367
344.0	11.17	0.3	0.7	230.0	1.912
372.0	13.45	0.4	0.5	258.0	1.485
400.0	15.58	0.5	0.4	287.0	1.356
401.0	15.65	0.5	0.4	315.0	2.048
439.0	17.90	0.7	0.3	344.0	2.142
477.0	20.36	0.8	0.3	372.0	1.206
496.0	21.60	0.8	0.2	400.0	0.894
515.0	22.72	0.9	0.2	401.0	1.205
534.0	23.75	0.9	0.2	420.0	1.143
535.0	23.81	0.9	0.2	439.0	0.984
580.0	26.67	1.0	0.2	458.0	1.412
624.0	29.26	1.0	0.2	477.0	0.888
668.0	31.05	1.1	0.2	496.0	0.903
712.0	33.19	1.2	0.3	515.0	1.244
734.0	34.36	1.2	0.3	534.0	1.282
756.0	35.72	1.2	0.3	535.0	0.796
778.0	37.00	1.2	0.3	558.0	1.491
800.0	37.94	1.1	0.3	580.0	0.941



Notes

- Performance and quality attributes and conditions not expressly stated in this specification document are intended to be excluded and do not form a part of this specification document.
- Electrical specifications and performance data contained in this specification document are based on Mini-Circuit's applicable established test performance criteria and measurement instructions.
- The parts covered by this specification document are subject to Mini-Circuit's standard limited warranty and terms and conditions (collectively, "Standard Terms"); Purchasers of this part are entitled to the rights and benefits contained therein. For a full statement of the Standard Terms and the exclusive rights and remedies thereunder, please visit Mini-Circuit's website at www.minicircuits.com/MCLStore/terms.jsp

