

35 MHz < Fco < 49.99 MHz

High Pass

Slope 0.21 x Fco

Passband Limit 650 MHz

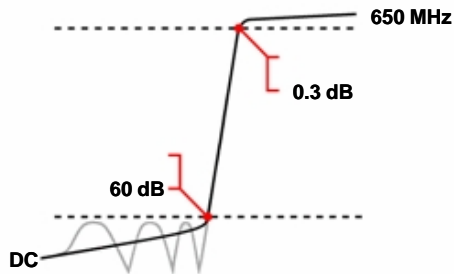
WHJ2-\_\_\_

Attenuation 60 dB

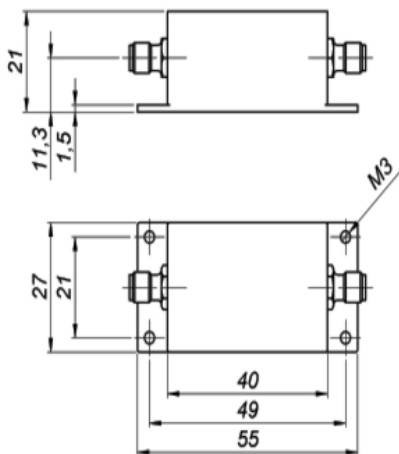
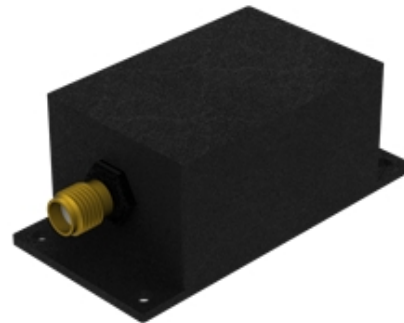
### Specifications

Passband:	___ to 650 MHz
Passband Insertion Loss:	0.25 dB max. (0.3 dB max. at Fco)
Passband Return Loss:	14 dB min. (VSWR 1.5:1 max.)
Stopband:	DC to ___ MHz
Stopband Attenuation:	60 dB min.
Operating Temperature:	5 °C to 45 °C
Power Handling:	max. 50 W CW into a 2:1 VSWR (Please see our <u>warranty</u> in this regard)
Dimensions (L x W x H):	max. 40 x 27 x 21 mm (plus connectors and flanges)
Approx. Weight:	0.07 kg
Mounting Provision:	7.5 mm flanges on both ends with M3 threaded holes
Connector 1:	- Please choose -
Connector 2:	- Please choose -

### Typical Performance



### 2 Section Chebyshev Design



### Connector Options

- SMA Female
- SMA Male
- N Female
- N Male

©2013 Wainwright Instruments. All rights reserved.

<b>Euro Prices</b>	<b>1 - 4 pcs:</b>	€ 230
(USD Prices will be quoted for US-based customers only)	<b>5 - 9 pcs:</b>	€ 207
	<b>10 - 24 pcs:</b>	€ 186

**Delivery Terms** FCA Andechs (free carrier) according to **Incoterms 2010**  
 In Deutschland liefern wir frachtfrei gemäß CPT **Incoterms 2010** (unversichert).  
 Regarding payment terms and warranty see [Terms and Conditions](#).  
**Delivery time:** normally 3 to 4 weeks - depending on quantity ordered and on our work load.

Customer is responsible for observing all applicable export laws in regard to filter application and location of end user



**Wainwright Instruments GmbH**  
 www.wainwright-filters.com

Tel: +49 8152 918230  
 Fax: +49 8152 918255  
 info@wainwright-filters.com