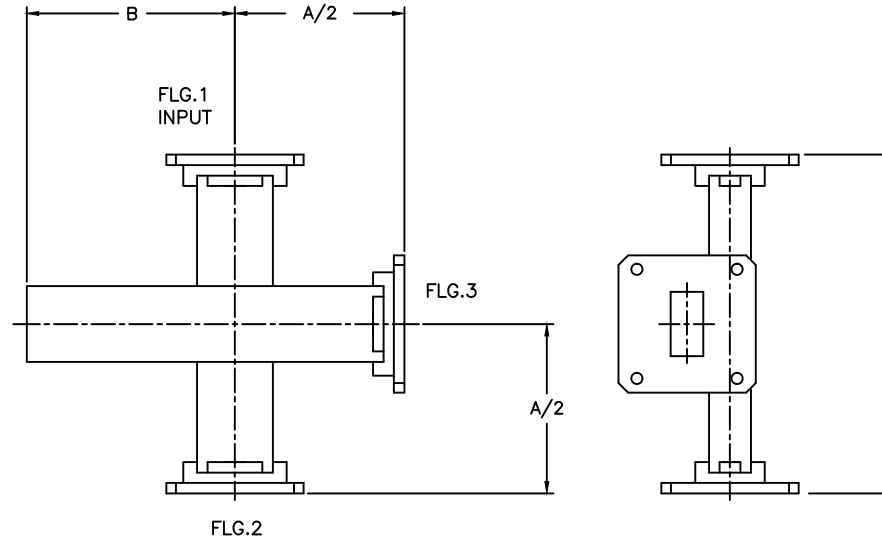


GENERAL SPECIFICATIONS				
PART NUMBER	FREQUENCY GHz	W/G SIZE DESIGN	DIM. -A-	DIM. -B-
WS1	1.12-1.7	WR650	7.5	8
WS2	1.7-2.6	WR430	7.5	8
WS3	2.6-3.95	WR284	7.5	5
WS4	3.3-4.9	WR229	7	4.75
WS5	3.95-5.85	WR187	6.5	4.5
WS6	4.9-7.05	WR159	6	4
WS7	5.85-8.2	WR137	6	4
WS8	7.05-10	WR112	4.2	3
WS9	8.2-12.4	WR90	4	2.75
WS10	10-15	WR75	3.75	2.5
WS11	12.4-18	WR62	3.5	2.37
WS12	15-22	WR51	3.1	2.25
WS13	18-26.5	WR42	2.2	1.5
WS14	22-33	WR34	2.2	1.5
WS15	26.5-40	WR28	2	1.15

REVISIONS				
ZONE	REV	DESCRIPTION	Date	APPROVED

- F = FLANGE TYPES
- 1 = CPRG
 - 2 = CPRF
 - 3 = CMR STANDARD
 - 4 = CMR THRU
 - 5 = CMR TAP
 - 6 = UG-COVER
 - 7 = UG-CHOKE
 - 8 = UG-COVER/GROOVE
 - 9 = PDR
 - 10 = UDR



GENERAL SPECIFICATIONS

Coupling: 30dB, 40dB, or 50dB
 Internal termination: 2 watts CW.
 Nominal Coupling: +/- 0.5dB
 Frequency Sensitivity: +/- 1.00dB max.
 Directivity: 20dB min.
 VSWR Waveguide: 1.05 max.

Mechanical

Construction: -A = Aluminum, -B = Brass-Copper
 Pressure: 30psi WR28 thru WR137, otherwise 10psi
 Flange Type: Multiple Type Available, See Table
 Finishing: Corrosion resistant 316 stainless steel epoxy coating

ORDERING INFORMATION

EXAMPLE PART NUMBER: WS1-A-6-6-6-30

W/G SIZE (WR28 to WR650) _____
 MATERIAL (-A, -B) _____
 FLANGE 1 (Type) _____
 FLANGE 2 (Type) _____
 FLANGE 3 (Type) _____
 ATTENUATION (dB) _____

MATERIAL:		MICROWAVE COMMUNICATIONS LABORATORIES INC. 7255 30TH AVE. N. SAINT PETERSBURG, FL 33710 TEL: (727) 344-6254 FAX: (727) 381-6116 http://WWW.MCLI.COM	SCALE: N/A
			SHEET: N/A
UNLESS OTHERWISE SPECIFIED: TOLERANCES IN (INCHES) OR [mm] (MILLIMETERS) FRACTIONS: ± 1/64 DECIMALS: ±.01 ±.005 ANGLE: ±1/2°		DRAWING TITLE: CROSSGUIDE DIRECTIONAL COUPLER, 3 WAVEGUIDE PORTS	
DRAWN: Paboon luekhamhan		PART NO. WS1 to WS15	
DATE: 07-16-2008		CAGE CODE: OD2L5	
APPROVED: T. Nguyen		DATE: 07-16-2008	
<small>FREQUENTLY MISSED: THE INFORMATION IN THIS DRAWING IS PROPRIETARY AND SHALL NOT BE USED OR DISCLOSED WITHOUT WRITTEN PERMISSION FROM MICROWAVE COMMUNICATIONS LABORATORIES INC. (MCLI)</small> 		SIZE: A	REV: A
		DWG NO. 83884	
DO NOT SCALE THE DRAWING			